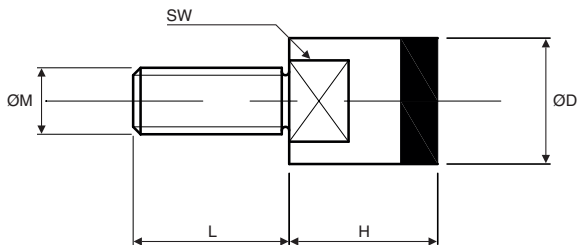


Magnetic head screw

VTAP

With rubber coating

- **Magnetic screw with rubber coating**
- With magnet incorporated in the screw head
- According to DIN EN ISO 4017-8,8
- Temperature of use: Max. 80°C
- Materials:
 - Zinc-plated steel body
 - NdFeB Magnet



DISCOUNTS

Qty	1+	5+	20+	40+	60+
Disc.	List	-15%	-20%	-30%	On request

Part number	ØM	ØD	L	H	SW	F (N)	Weight (g)	Price each 1 to 4
VTAP6-13	M6	13	10	16	11	15	13	17,14 €
VTAP8-16	M8	16	12	18	13	23	23	20,55 €
VTAP10-20	M10	20	14	20	17	46	44	25,29 €

*Depending on availability - Tolerances +/-0.2mm - Dimensions in mm

HPC

WEB
04/2021

www.hpceurope.com

Tél: 0 825 88 5000 Service 0,15€/min + prix appel

Magnetic screw with socket

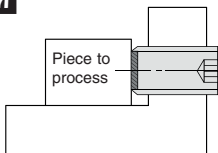
Steel

HCA

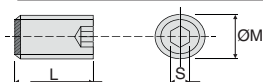
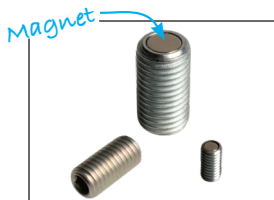
- **Magnetic screw with socket hexagonal head**
- With magnet incorporated at the end of the screw.
- According to DIN EN ISO 4017-8,8
- Temperature of use: Max. 80°C
- Materials:
Zinc-plated steel body
NdFeB Magnet

Application

- Sensor counter
- Fixtures



Example of use:
Fixtures



DISCOUNTS

Qty	1+	5+	20+	40+	60+
Disc.	List	-15%	-20%	-30%	On request

Part number	ØM	L	S	F (N)	Weight (g)	Price each 1 to 4
HCA6-12	M6	12	3	2,5	2	6,73 €
HCA6-16	M6	16	3	2,5	3	6,80 €
HCA6-20	M6	20	3	2,5	4	6,87 €
HCA6-25	M6	25	3	2,5	5	7,01 €
HCA6-30	M6	30	3	2,5	6	7,08 €
HCA8-16	M8	16	4	7,0	6	7,01 €
HCA8-20	M8	20	4	7,0	8	7,15 €
HCA8-25	M8	25	4	7,0	10	7,23 €
HCA8-30	M8	30	4	7,0	11	7,38 €
HCA8-40	M8	40	4	7,0	15	7,74 €
HCA10-20	M10	20	5	11,0	12	7,52 €
HCA10-25	M10	25	5	11,0	15	7,74 €
HCA10-30	M10	30	5	11,0	18	7,85 €
HCA10-40	M10	40	5	11,0	24	8,20 €
HCA10-50	M10	50	5	11,0	30	8,64 €
HCA12-25	M12	25	6	17,0	21	8,35 €
HCA12-30	M12	30	6	17,0	25	8,57 €
HCA12-40	M12	40	6	17,0	34	9,07 €
HCA12-50	M12	50	6	17,0	43	9,54 €
HCA12-60	M12	60	6	17,0	52	10,04 €
HCA16-30	M16	30	8	35,0	45	11,02 €
HCA16-40	M16	40	8	35,0	60	11,66 €
HCA16-50	M16	50	8	35,0	76	12,35 €
HCA16-60	M16	60	8	35,0	92	13,00 €
HCA16-80	M16	80	8	35,0	123	14,33 €

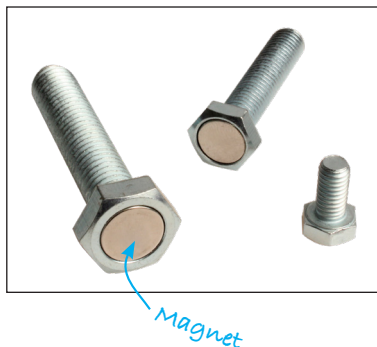
*Depending on availability - Dimensions in mm

Magnetic screw with hexagonal head

VTHA

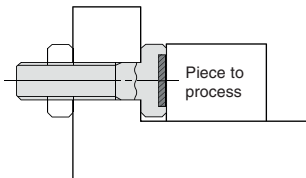
Steel

- **Magnetic screw with hexagonal head**
- With magnet incorporated in the screw head
- According to DIN EN ISO 4017-8,8
- Temperature of use: Max. 80°C
- Materials:
 - Zinc-plated steel body
 - NdFeB Magnet

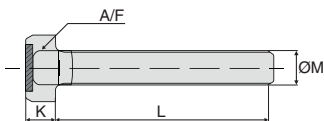


Application

- Sensor counter
- Fixtures



Example of use:
Fixtures



DISCOUNTS

Qty	1+	5+	20+	40+	60+
Disc.	List	-15%	-20%	-30%	On request

Part number	ØM	L	K	A/F	F (N)	Weight (g)	Price each
VTHA6-12	M6	12	4,3	10	25	6	7,59 €
VTHA6-16	M6	16	4,3	10	25	6	7,66 €
VTHA6-20	M6	20	4,3	10	25	7	7,74 €
VTHA6-25	M6	25	4,3	10	25	8	7,85 €
VTHA6-30	M6	30	4,3	10	25	10	7,92 €

*Depending on availability - Dimensions in mm

HPC

WEB
04/2021

www.hpceurope.com

Tél: 0 825 88 5000 Service 0,15 €/min + prix appel

DISCOUNTS

Qty	1+	5+	20+	40+	60+
Disc.	List	-15%	-20%	-30%	On request

Part number	ØM	L	K	A/F	F (N)	Weight (g)	Price each 1 to 4
VTHA8-16	M8	16	4,3	13	50	11	8,28 €
VTHA8-20	M8	20	4,3	13	50	12	8,43 €
VTHA8-25	M8	25	4,3	13	50	15	8,50 €
VTHA8-30	M8	30	4,3	13	50	17	8,64 €
VTHA8-40	M8	40	4,3	13	50	21	9,00 €
VTHA10-20	M10	20	6,3	17	75	24	9,75 €
VTHA10-25	M10	25	6,3	17	75	27	9,90 €
VTHA10-30	M10	30	6,3	17	75	31	10,04 €
VTHA10-40	M10	40	6,3	17	75	37	10,47 €
VTHA10-50	M10	50	6,3	17	75	43	10,81 €
VTHA12-25	M12	25	7,5	19	110	40	11,38 €
VTHA12-30	M12	30	7,5	19	110	45	11,59 €
VTHA12-40	M12	40	7,5	19	110	54	11,73 €
VTHA12-50	M12	50	7,5	19	110	62	12,20 €
VTHA12-60	M12	60	7,5	19	110	71	12,70 €
VTHA16-30	M16	30	10,0	24	145	86	13,90 €
VTHA16-40	M16	40	10,0	24	145	100	14,62 €
VTHA16-50	M16	50	10,0	24	145	117	14,62 €
VTHA16-60	M16	60	10,0	24	145	133	15,95 €
VTHA16-80	M16	80	10,0	24	145	165	17,28 €

*Depending on availability - Dimensions in mm

Our other products



RURt

Swivel castor with central hole, Polyurethane - Aluminium rim (Free



DOMI30

Connecting kits, Z2 linking kit



CHM40-MOT

Asynchronous AC motorgearboxes 0.18 to 0.55kW, 0.18 to



BC3

Panamech, Multi-Beam stainless steel, Stainless steel - with clampin...



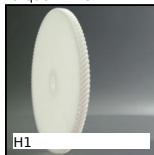
MAC

Carabiner DIN5299 steel, Steel



CHML50

Worm and wheel gear reducer, up to 107 Nm - Integrated torque limiter



H1

Crossed helical gear crossed axis at 90°, Machined plastic (delrin)



UGPC

Actuator guide kit, Short bearing



BLHB40

Right angled gearbox, bored shafts, up to 10.3 Nm



H0

Crossed helical gear crossed axis at 90°, Steel 20NCD2



SLBWSS

Indexing plunger, weldable, Weldable - Stainless steel



BLHB50

Right angled gearbox, bored shafts, up to 30 Nm

Complementary products



VTHA

Magnetic screw with hexagonal head, Steel



VTAP

Magnetic head screw, With rubber coating With rubber coating