

Slotted flat headed shoulder screw

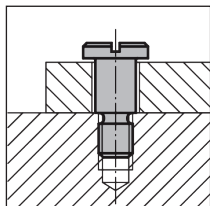
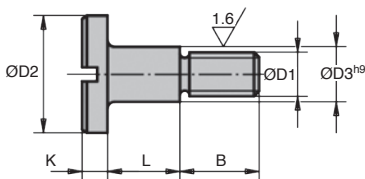
Steel

HAS

- Fixes to a frame and allows rotation around the shoulder
- Conforms to DIN 923
- Material:
Burnished steel, resistance class 5.8

Accessory

- Used with HAR captive C washer



DISCOUNTS

Qty	1+	6+	20+
Disc.	List	-10%	On request

Part number	ØD1	ØD2	ØD3	L	B	K	Weight (g)	For captive washer	Stock*	Price each 1 to 5
HAS6-8-10	M6	13	8,9	10 +0,07/+0,15	9	3,1	9	HAR9	✓	2,35 €
HAS8-10-12	M8	16	10,9	12 +0,1/+0,2	11	3,8	17	HAR11	✓	2,67 €
HAS10-13-16	M10	20	13,0	16 +0,1/+0,2	13,5	4,6	33	-	-	3,56 €

Dimensions in mm

Fax 0 825 88 6000
Service 0,15 € / min
+ prix appel

cial2@hpceurope.com

HPC

SUPPLEMENT 2019

165

Our other products



GE14

Toggle latches, With padlock-holder



HTD14M_85

HTD Heavy duty timing pulley, HTD14 Steel



BLH20

Right angled gearbox, from 0.53 to 1.77



CHB

Worm and wheel gear reducer, up to 73 Nm



SUP

Self-centering clamping hub steel, Without locknut



PFC

Fixed rubber levelling foot, Levelling support for small parts



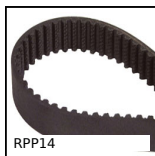
UCFL

Cast iron flanged bearing, Cast iron



VPRA_M

Handwheel with handle, Thermosetting plastic - stainless steel hub



RPP14

RPP heavy duty timing belt, RPP14



MEB

Moulded plastic bevel gear (nylon), 1:1



MET

Cylindrical sintered bronze bush, Self-lubricating sintered bronze



MSP3815

Masterplate® glueable insert rectangular, rectangular with threaded...

Complementary products



HAR9

Captive C washer, DIN 6371