

Captive C washer **DIN 6371**

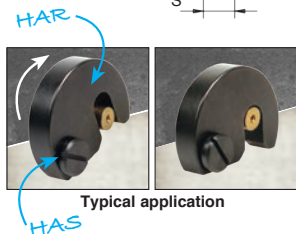
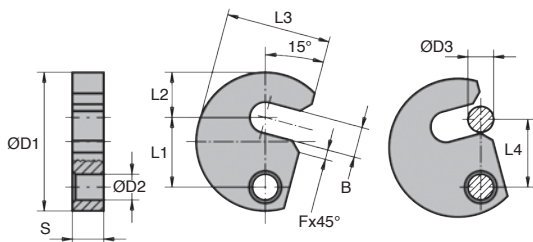
HAR

Steel

- Allows a shaft to be held with simple pivoting action
- Conforms to DIN 6371
- Material:
Burnished steel

Accessory

- Used with **HAS** shoulder screw (acc DIN 923)



DISCOUNTS

Qty	1+	6+	20+
Disc.	List	-10%	On request

Part number	B	ØD1	ØD2	ØD3	F	L1	L2	L3	L4	S	Weight (g)	Stock*	Price each 1 to 5
HAR9-38	7,5	38	9	6	3	19,6	11	29	19	9,8	0,061	✓	23,53 €
HAR9-43	9,5	43	9	8	3	21,6	14	32,5	21	9,8	0,076	-	24,71 €
HAR9-48	11,5	48	9	10	3	23,6	17	36,5	23	9,8	0,09	✓	27,72 €
HAR11-61	13,5	61	11	12	3	29,6	22	45	29	11,8	0,18	✓	34,64 €
HAR11-65	15,5	65	11	14	3	31,6	23	49	31	11,8	0,2	-	37,18 €
HAR11-68	17,5	68	11	16	3	33,6	25	50	33	11,8	0,21	-	39,26 €
HAR11-74	21,5	74	11	20	4	36,6	28	55	36	11,8	0,23	-	50,12 €

Dimensions in mm

Our other products



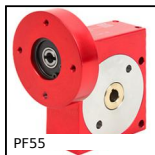
VCMB

Dual-thread screw
wood/metal, Steel



BPTR_M

End cap with threaded
insert for round tube,
With threaded insert



PF55

Worm and wheel gear
reducer, up to 57 Nm



PRF-SCL

Lock for aluminium
profile, Lock for
sliding doors



MDB_MTB

Moulded plastic bevel
gear (nylon), 3:1



OP3_14_06

Reducing sleeve for
OP indicators,
Reduction socket



PRF_BP

Doorstop for
aluminium profile,
Swing door stop



GAL21

Conveyor wheel,
Plastic



MFBS

Stainless steel flexible
bellows coupling,
Stainless steel - with



AKD

Bellows coupling
Gerwah®, from 22 to
600Nm



ES

Simple support base
(bipod), Plastic



PFC

Fixed rubber levelling
foot, Levelling support
for small parts

Complementary products



HAS

Captive C washer,
Slotted flat headed
shoulder screw