

Single needle roller universal joint

H Industrial range

- **Standard series**
- **Needle bearings**
- Suitable for speeds up to 4000 rpm
- Max. misalignment angle 45°
- Materials:
 - Body: C45 steel
 - Pin: Hardened steel 18NCD4

Uses

- High speed applications

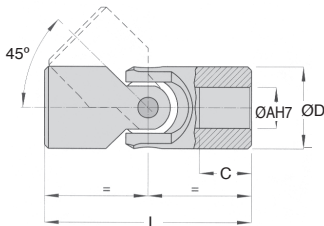
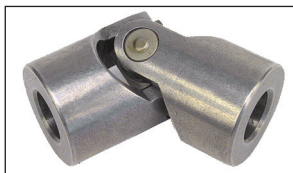
Accessories

- Optional rubber cover

Modifiable bore



High speed applications



Angle	Factor
5°	1,25
10°	1,00
20°	0,75
30°	0,45
40°	0,30

Effect of operating angle

The torques below are given for a 10° angle. For other angles, the appropriate factor from this table should be applied. E.g. For 100Nm to be transmitted at 20°, the corrected value of torque becomes $100/0.75 = 133$ Nm and a joint should be chosen that can transmit 133Nm at the required speed.

DISCOUNTS

Qty	1+	2+	4+
Disc.	List	-6%	On request

Part number	ØD	ØA	C	L	Torque (Nm)						Stock*	Price each
					at 250 rpm	at 500 rpm	at 1000 rpm	at 2000 rpm	at 3000 rpm	at 4000 rpm		
H02-A-8/8	16	8	15	52	-	-	-	5,8	-	-	✓	55,03 €
H03-A-10/10	20	10	18	62	22	17	14	11,0	10	9	✓	49,52 €
H05-A-14/14	25	14	20	74	34	29	24	22,0	20	18	✓	49,52 €
H1-A-16/16	32	16	24	86	65	55	45	40,0	37	32	✓	55,03 €
H2-A-18/18	37	18	17	72	75	61	50	45,0	40	36	✓	57,91 €
H3-A-20/20	40	20	30	108	140	120	100	80,0	70	65	✓	66,06 €
H4-A-22/22	47	22	22	95	162	132	108	88,0	77	71	-	76,86 €
H5-A-25/25	50	25	38	132	200	170	130	110,0	90	85	✓	85,32 €
H6-A-30/30	63	30	45	166	300	270	230	190,0	160	140	-	109,87 €
H61-A-32/32	63	32	45	166	-	-	-	-	-	-	-	On request
H7-A-35/35	70	35	35	140	326	277	237	198,0	168	-	-	On request
H8-A-40/40	80	40	50	180	365	303	255	205,0	186	-	-	On request
H9-A-50/50	95	50	54	190	402	335	275	225,0	198	-	-	On request

*Depending on availability - Dimensions in mm

Our other products



Indexing plunger, with ring



Tightening washer - DIN 6340, Steel



DOMILINE - Accessories, XY linking kit



RPP type belt by the metre, RPP8 Steel cored polyurethane



Spur gear, Steel 35NCD6



Anti vibration mount, Stainless steel



Linear ball slide - Stainless steel balls, Rail - from 514 N to 16700 N



Progressive stop, Steel



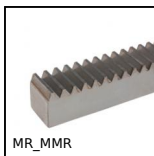
Socket headed screw CHC - DIN 912, Steel class 12.19



Double spur gear, Steel 20NCD2



Linear ball slide, Manual locking clamp T



Rack, square section, Steel

Complementary products



Bellows cover, Standard



Universal joint - steel, Needle bearings - double