

# Single needle roller universal joint

## H Industrial range

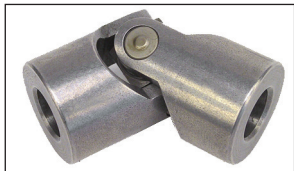
- **Standard series**
- **Needle bearings**
- Suitable for speeds up to 4000 rpm
- Max. misalignment angle 45°
- **Materials:**  
Body: C45 steel  
Pin: Hardened steel 18NCD4

### Uses

- High speed applications

### Accessories

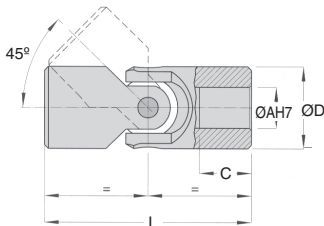
- Optional rubber cover



### Modifiable bore



High speed applications



Angle	Factor
5°	1,25
10°	1,00
20°	0,75
30°	0,45
40°	0,30

### Effect of operating angle

The torques below are given for a 10° angle. For other angles, the appropriate factor from this table should be applied. E.g. For 100Nm to be transmitted at 20°, the corrected value of torque becomes  $100/0.75 = 133$  Nm and a joint should be chosen that can transmit 133Nm at the required speed.

### DISCOUNTS

Qty	1+	2+	4+
Disc.	List	-6%	On request

Part number	ØD	ØA	C	L	Torque (Nm)						Stock*	Price each
					at 250 rpm	at 500 rpm	at 1000 at 2000 rpm	at 3000 rpm	at 4000 rpm			
H02-A-8/8	16	8	15	52	-	-	-	6,9	-	-	✓	55,03 €
H03-A-10/10	20	10	18	62	26,4	20,4	16,8	13,2	12,0	10,8	✓	49,52 €
H05-A-14/14	25	14	20	74	40,8	34,8	28,8	26,4	24,0	21,6	✓	49,52 €
H1-A-16/16	32	16	24	86	78,0	66,0	54,0	48,0	44,4	38,4	✓	55,03 €
H2-A-18/18	37	18	17	72	90,0	73,2	60,0	54,0	48,0	43,2	✓	57,91 €
H3-A-20/20	40	20	30	108	168,0	144,0	120,0	96,0	84,0	78,0	✓	66,06 €
H4-A-22/22	47	22	22	95	194,4	158,4	129,6	105,6	92,4	85,2	-	76,86 €
H5-A-25/25	50	25	38	132	240,0	204,0	156,0	132,0	108,0	102,0	✓	85,32 €
H6-A-30/30	63	30	45	166	360,0	324,0	276,0	228,0	192,0	168,0	-	109,87 €
H61-A-32/32	63	32	45	166	360,0	324,0	276,0	228,0	192,0	168,0	-	102,34 €
H7-A-35/35	70	35	35	140	391,2	332,4	284,4	237,6	201,6	-	-	185,22 €
H8-A-40/40	80	40	50	180	438,0	363,6	306,0	246,0	223,2	-	-	255,02 €
H9-A-50/50	95	50	54	190	482,4	402,0	330,0	270,0	237,6	-	-	357,36 €

\*Depending on availability - Dimensions in mm



# Double needle roller universal joint

## Industrial range

## HD

- **Standard series**
- **Needle bearings**
- Suitable for speeds up to 4000 rpm
- Max. misalignment angle 45°
- **Materials:**
  - Body: C45 steel
  - Pin: Hardened steel 18NCD4



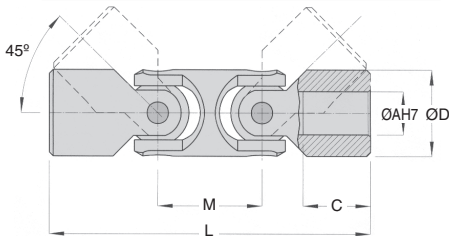
### Uses

- High speed applications

### Accessories

- Optional rubber cover

### Modifiable bore



Angle	Factor
5°	1,25
10°	1,00
20°	0,75
30°	0,45
40°	0,30

### Effect of operating angle

The torques below are given for a 10° angle. For other angles, the appropriate factor from this table should be applied. E.g. For 100Nm to be transmitted at 20°, the corrected value of torque becomes  $100/0.75 = 133 \text{ Nm}$  and a joint should be chosen that can transmit 133Nm at the required speed.

**High speed applications**

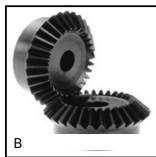
### DISCOUNTS

Qty	1+	2+	4+
Disc.	List	-6%	On request

	ØD	ØA	C	M	L	Torque (Nm)				Price each			
						at 250 rpm	at 500 rpm	at 1000 rpm	at 2000 rpm		at 3000 rpm	at 4000 rpm	
HD03-A-10/10	20	10	18	26	88	26,4	20,4	16,8	13,2	12,0	10,8	✓	148,71 €
HD05-A-14/14	25	14	19	33	104	40,8	34,8	28,8	26,4	24,0	21,6	✓	116,63 €
HD1-A-16/16	32	16	24	39	125	78,0	66,0	54,0	48,0	44,4	38,4	✓	116,63 €
HD3-A-20/20	40	20	30	48	156	168,0	144,0	120,0	96,0	84,0	78,0	✓	157,41 €
HD5-A-25/25	50	25	37	59	188	240,0	204,0	156,0	132,0	108,0	102,0	✓	187,42 €
HD6-A-30/30	63	30	41	80	238	360,0	324,0	276,0	228,0	192,0	168,0	✓	211,71 €
HD61-A-32/32	63	32	41	80	238	360,0	324,0	276,0	228,0	192,0	168,0		197,19 €
HD7-A-35/35	70	35	30	78	212	391,2	332,4	284,4	237,6	201,6	-		392,42 €
HD8-A-40/40	80	40	48	120	290	438,0	363,6	306,0	246,0	223,2	-		632,98 €
HD9-A-50/50	95	50	50	120	290	482,4	402,0	330,0	270,0	237,6	-		738,44 €

Dimensions in mm

## Our other products



B  
Steel bevel gear, 1:1



BPHFclip  
Clip for ball transfer unit, Insert clip - Installing from above



CHA35  
Hinge for aluminium profile, Hinge



KB\_WW  
Closed linear precision bearing, Economy range



PFM  
Fixed levelling foot, Flanged plate



PRF\_ER  
Joining bar for aluminium profile, joint bar



DB  
Steel bevel gear, 2:1



CHB  
Double output shaft, For CHB gearbox



PDM\_PDV  
Detectable plastic palm grip, blue



PSG25  
Spur gear - precision range, Stainless steel



BPL  
Ball transfer unit light duty, Light



UTKswr  
Utilitak® V rail, V rail

## Complementary products



M  
Bellows cover, Accessory:



HD  
Double needle roller universal joint, Heavy duty



HDSS  
Needle roller double universal joint - Stainless steel, Heavy duty



H02SS  
Needle roller universal joint - Stainless steel, Heavy duty DIN808-7...