



Belt tensioner

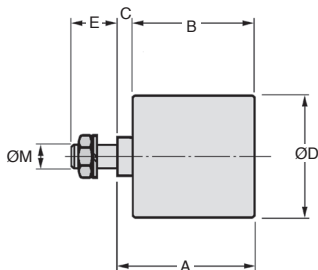
For applications in hostile environments

GTCss

- **Belt tensioner**
 - Sealing caps not fitted
 - Integrated bearings
 - Max working temp : 70°C
 - Materials :
 - Nut, screw and spacer : Galvanised steel
 - Roller : Polyamide



Corrosion resistant materials



DISCOUNTS

Qty	1+	3+	5+
Disc.	List	-10%	On request

Part number	A	B	C	ØD	E	ØM	Arm size	Max speed (rpm)	Stock*	Price each 1 to 2
GTC-2/SS	38	35	3	30	13	M8	BTE2	8000	✓	35,56 €
GTC-3/4/SS	51	45	6	40	16	M10	BTE3-BTE4	8000	✓	49,07 €
GTC-5/SS	67,5	60	7,5	60	21,5	M12	BTE5	6000	✓	100,23 €

*Depending on availability - Dimensions in mm

Our other products



Q6

Deep groove ball bearing, Steel



BLHB30

Right angled gearbox, bored shafts, up to 4.4 Nm



CHA35

Hinge for aluminium profile, Hinge



CHM63

Worm and wheel gear reducer, up to 196 Nm



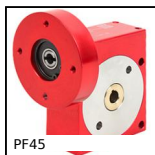
HK

Manual locking clamp, Manual locking clamp LRX



DHX

Dowel pin internal thread, Extractable DIN 7979D



PF45

Worm and wheel gear reducer, up to 40 Nm



ACM_AZ

Mounting bracket for bonnet fastener, Hook



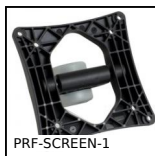
PRF-CHAR-POU

Tool holder for aluminium profile, Manual locking clamp LRX



DOMI80

Accessories, Fixing kit



PRF-SCREEN-1

Screen support, Basic support



PF40

Worm and wheel gear reducer, up to 18 Nm

Complementary products



BTE

Universal tension arm, For standard applications