

# Belt tensioner



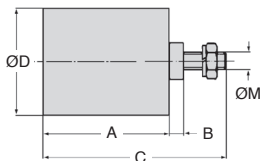
## GTC

## For standard applications

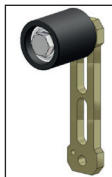
- Belt tensioner for use with BTE tender arm or fixed TMR and TFR tensioners
- Integrated bearings
- Greased for life
- Materials :  
Nut, screw and spacer : Galvanised steel  
Roller : Polyamide
- Max working temp : 70°C



**Good price/  
quality ratio**



Typical application : used with BTE tender arm



Typical application : used with TFR tensioner

### DISCOUNTS

Qty	1+	4+	10+
Disc.	List	-10%	On request

Part number	A	B	C	ØD	ØM	Max speed (rpm)	Weight (kg)	Arm ref	Stock*	Price each 1 to 3
GTC-2	35	3,0	51	30	M8	8000	0,08	BTE2	✓	26,87 €
GTC-3/4	45	6,0	67	40	M10	8000	0,17	BTE3-BTE4	✓	31,65 €
GTC-5	60	7,5	89	60	M12	6000	0,40	BTE5	✓	56,64 €
GTC-6	90	9,0	127	80	M20	5000	1,20	BTE6-BTE7	✓	96,30 €
GTC-7	135	7,0	169	90	M20	4500	1,70	BTE7	-	189,97 €

\*Depending on availability - Dimensions in mm

## Our other products



GPB

Threaded spherical knob, With brass insert



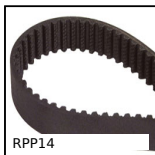
AT5P\_AT10P

Connecting plate for AT type timing belts, AT5



HTD8M\_20

HTD Heavy duty timing pulley, HTD8 Cast



RPP14

RPP heavy duty timing belt, RPP14



PSG125S

Spur gear - precision range, Stainless steel 303



SKM

Hexagonal steel nut, Steel - 1 thread



ZA

Shaft for linear guides, Hardened ground steel



APBC

Circular rod, Round rod



PHT

Pull handle, Up to 250 °C



HLU

Spoked handwheel without handle,



DER90

Stainless steel AC asynchronous motor



M0

Worm and wheel set, Hardened steel

## Complementary products



BTE

Universal tension arm, For standard applications



TMR

Rigid manual tensioner, Adjustable



T10\_21\_AL

T type timing pulley, Economy range - T10 aluminium



T10\_30\_AL

T type timing pulley, Economy range - T10 aluminium