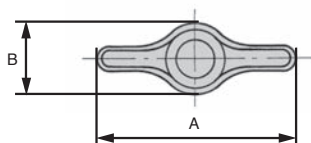
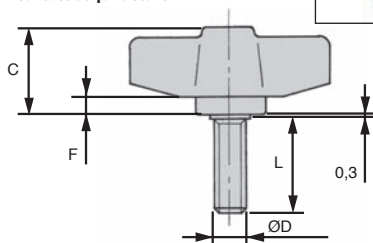


- Male wing knob
- For manual tightening
- Material:  
Matt black polyamide  
Threaded shaft: zinc plated steel or stainless steel

**Info.**

- Not sold individually, please contact us for details

shaft zinc  
plated steel or  
stainless steel

**DISCOUNTS**

Qty	1+	10+	20+	50+	100+	200+
Disc.	List	-5%	-10%	-15%	-20%	On request

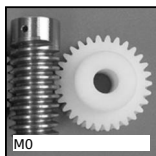
Part number	A	B	C	ØD	L	F	Stock*	Price each 1 to 9
<b>Steel</b>								
GGP34-M6-25	34	14	18	M6	25	4	✓	2,06 €
GGP34-M8-25	34	14	18	M8	25	4	✓	2,21 €
GGP40-M8-25	40	15	19	M8	25	4	✓	2,41 €
GGP48-M8-25	48	17	20	M8	25	4	✓	2,83 €
GGP48-M8-40	48	17	20	M8	40	4	✓	2,88 €
<b>Stainless steel</b>								
GGP34-M6-20/SS	34	14	18	M6	20	4	✓	4,46 €
GGP34-M6-30/SS	34	14	18	M6	30	4	-	4,69 €

\*Depending on availability - Dimensions in mm

## Our other products



**BTE**  
Universal tension arm,  
For normal  
applications



**M0**  
Worm and wheel set,  
Machined plastic  
(delrin)



**PW\_PWG15**  
Wheel - precision  
range, Bronze



**NSO**  
Housing for open  
linear bearing,  
Opened - long



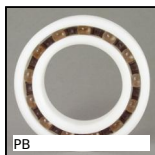
**AT5M AT10M**  
AT type timing belt  
per metre, AT10 Steel  
cored polyurethane



**EHD04**  
Internal epicyclic  
servo reducers, from  
3.4 to 7 Nm



**BC3**  
Panamech, Multi-  
Beam stainless steel,  
Stainless steel - with  
clamping...



**PB**  
Plastic deep groove  
ball bearing, Plastic -  
glass balls material



**PRF\_FIX\_UNI**  
Universal fastener for  
aluminium profile,  
Universal



**B3PAN**  
Panamech, Multi-  
Beam stainless steel,  
Stainless steel - with



**LOQ**  
Manual lock, Manual  
latch



**HTD14M\_55**  
HTD Heavy duty  
timing pulley, HTD14  
Steel

## Complementary products



**GGB**  
Female wing knob,  
With blind thread



**GGB**  
Female wing knob,  
Fully threaded