

Female wing knob

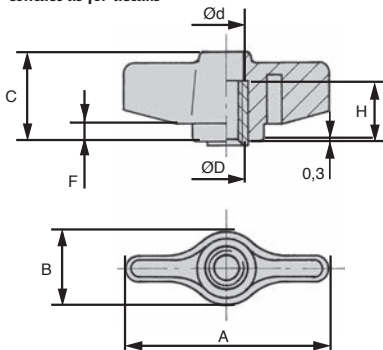
Stock

GGB **Technopolymer** with brass insert

- Female wing knob with tapped hole (blind or fully threaded)
- For manual tightening
- Material:
Matt black polyamide with brass insert

Info.

- Not sold individually, please contact us for details



with brass insert

DISCOUNTS

Qty	1+	10+	20+	50+	100+	200+
Disc.	List	-5%	-10%	-15%	-20%	On request

Part number	A	B	C	ØD	Ød	H	F	Stock*	Price each 1 to 9
Knob with blind thread									
GGB34-M6	34	14	18	M6	-	9	4	✓	1,88 €
GGB34-M8	34	14	18	M8	-	9	4	✓	1,88 €
GGB40-M6	40	15	19	M6	-	9	4	✓	1,98 €
GGB40-M8	40	15	19	M8	-	9	4	✓	1,98 €
GGB48-M6	48	17	20	M6	-	13	4	-	2,06 €
GGB48-M8	48	17	20	M8	-	13	4	✓	2,06 €
Knob, fully threaded									
GGB34-M6/FP	34	14	18	M6	7	15	4	✓	2,06 €
GGB40-M6/FP	40	15	19	M6	9	15	4	✓	2,11 €
GGB40-M8/FP	40	15	19	M8	9	15	4	✓	2,11 €
GGB48-M6/FP	48	17	20	M6	9	15	4	✓	2,21 €
GGB48-M8/FP	48	17	20	M8	9	15	4	✓	2,21 €

*Depending on availability - Dimensions in mm

Our other products



BOX-TOR-MAX
Box set of Nitrile O-rings in nitrile, 2.90 x 1.78mm to 82.14 x 3.53



CLB_T
Die cast zinc clamping lever - male, Zamak



NSU
Universal 90° support clamp, Universal 90° support clamp



TBD
Manual leadscrew table with opposing threads, 20kg



AC
Strike for toggle latch, 15mm



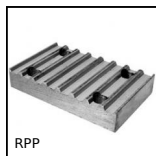
GP
Spring loaded toggle latch, With padlock-holder



VHTM
Hexagonal headed screw Hygienic Design®, Stainless steel



BLOC
Doorstop, Doorstop



RPP
Connecting plate for RPP type timing belts, RPP14



ZA
Shaft for linear guides, Hardened ground steel



PCS6ECO
Chain sprocket - steel, 6mm (DIN 04-1)



H0
Crossed helical gear crossed axis at 90°, Steel 20NCD2

Complementary products



GGB
Female wing knob, Fully threaded



GGP
Male wing knob, Technopolymer with stainless steel spindle