

Flexible toggle latch

Stock StaSte

GE1006

Slot fastening

- Hook fastening
- Ring is slightly flexible
- Material: White zinc steel or stainless steel 303

Steel or stainless steel

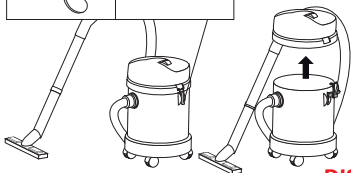
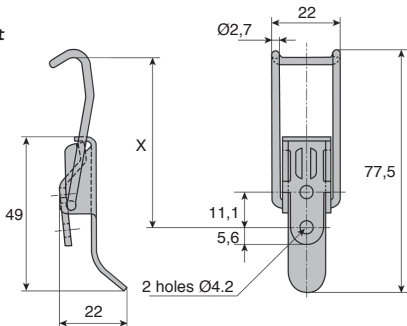
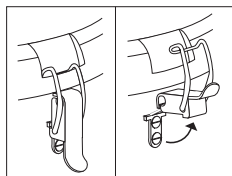


Assembly

- Approx mounting dimension:
X = 56.6mm to withstand a tension of 400N

Info

- Not sold individually, please contact us for details



DISCOUNTS

Qty	1+	51+	101+	250+	400+	500+
Disc.	List	-10%	-15%	-20%	-25%	On request

Part number	Wire Ø	Lever thickness	Back-plate thickness	Max. Tension (N)	Weight (g)	Stock*	Price each 1 to 50
Steel							
GE1006-ZB	2,7	15/10th	20/10th	550	25	✓	1,76 €
Stainless steel							
GE1006-SS	2,5	15/10th	20/10th	550	24	✓	8,46 €

*Subject to availability - Dimensions in mm

HPC

WEB
04/2020

www.hpceurope.com

Tél: 0 825 88 5000 Service 0,15 €/min + prix appel

Our other products



TOC
Swivel head, Short



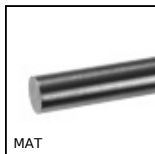
RPCplss
Pivoting wheel with
double brake,
Stainless steel -
Polyamide



DOMI50
DOMILINE -
Adjustment slide,
Slide DOMILINE 50
with counter and



FBL6000_K1
Brush per metre,
Black polyamide 6 -
small size



MAT
Ground precision
shaft, 100C6 steel bar



PRF_PSA
Roller for aluminium
profile, Linear guide
shaft



712_019
Knob for clamping,
Knurled



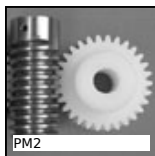
PRES3HR
Manual bench press,
Force up to 400kg



UCP_PBT
Pillow block, Polymer
and stainless steel



RGS
Backlash free
coupling Rotex® GS,
from 0.5 to 190Nm



PM2
Wheel, Machined
plastic (delrin)



LWL
Linear ball slide -
Stainless steel balls,
Chariot - from 514 N
to 16700 N

Complementary products



AC
Catch plate for toggle
latch, 15mm



GP75
Spring loaded toggle
latch, Standard
(GP75)



GE32
Sprung toggle latch
with connecting link,
Standard