

Flexible toggle latch

Stock Sta Ste

GE1006

Slot fastening

- Hook fastening
- Ring is slightly flexible
- Material: White zinc steel or stainless steel 303

Steel or stainless steel

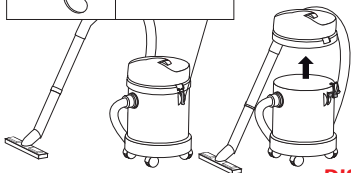
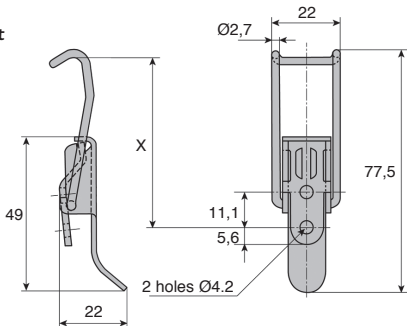
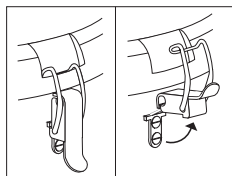


Assembly

- Approx mounting dimension:
X = 56.6mm to withstand a tension of 400N

Info

- Not sold individually, please contact us for details



DISCOUNTS

Qty	1+	51+	101+	250+	400+	500+
Disc.	List	-10%	-15%	-20%	-25%	On request

Part number	Wire Ø	Lever thickness	Back-plate thickness	Max. Tension (N)	Weight (g)	Stock*	Price each 1 to 50
Steel							
GE1006-ZB	2,7	15/10th	20/10th	550	25	✓	1,76 €
Stainless steel							
GE1006-SS	2,5	15/10th	20/10th	550	24	✓	8,46 €

*Subject to availability - Dimensions in mm

HPC

WEB
04/2020

www.hpceurope.com

Tél: 0 825 88 5000 Service 0,15 €/min + prix appel

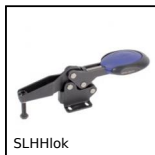
Our other products



VTHA
Magnetic screw with hexagonal head, Steel



PRF_PF
Anchoring bracket for aluminium profile, Anchor



SLHHlok
Horizontal toggle clamp, Horizontal toggle clamp / horizontal foot



PRF_ART
Articulated bracket for use with aluminium profile, Standard



GDR880
Straight track for slat top chain, Ranges 880 and 881



LFM
Steel leadscrew, Medium carbon steel - 1 thread



NTMbr
Set screw brass tip, Brass-point



SHA_PTR
Handwheel with folding handle, Polyamide



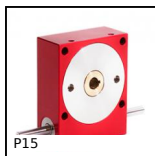
BEAB
Knob star grip antibacterial, Star, anti-bacterial



M1
Worm and wheel set, Machined plastic (delrin)



TS01_TW01
Drylin® T linear slide, up to 7000 N



P15
Worm and wheel gear reducer, up to 3,75 Nm

Complementary products



GP75
Spring loaded toggle latch, Standard (GP75)



GE32
Sprung toggle latch with connecting link, Standard