

GE5 GE18

Standard and miniature versions

- Hook fastening

- Material:

White zinc steel or stainless steel 303

Assembly

- GE5-ZB and GE5-SS are used with AC121-ZB and AC121-SS hooks, dimension X = 77.5mm to withstand a tension up to 350N
- GE18-ZB and GE18-SS are used with AC118-ZB and AC118-SS hooks, dimension X = 31.1mm to withstand a tension up to 150N
- Dimension X taken on the first hole of the hook.

Advantages

- Very flexible

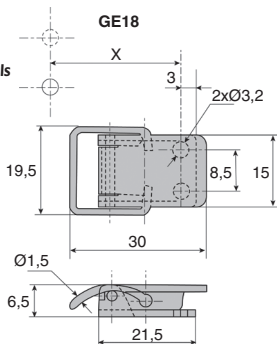
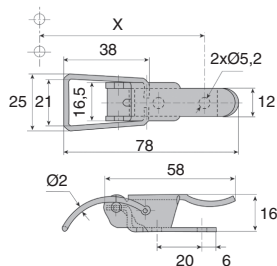
Info.

- Not sold individually, please contact us for details

Accessories

- Hooks AC121, AC118 (t.imagetome1 p.125)

steel or stainless steel



DISCOUNTS

Qty	1+	51+	101+	250+	400+	500+
Disc.	List	-10%	-15%	-20%	-25%	On request

Part number	Material	Wire Ø	Lever thickness mm	Back-plate thickness	Max. tension (N)	Weight (g)	Stock*	Price each 1 to 50
Standard								
GE5-ZB	steel	2,0	20/10th	20/10th	500	36,0	✓	3,24 €
GE5-SS	stainless steel	2,0	20/10th	20/10th	500	36,0	✓	6,55 €
Miniature								
GE18-ZB	steel	1,5	8/10th	10/10th	300	6,5	✓	1,92 €
GE18-SS	stainless steel	1,5	8/10th	10/10th	300	6,5	✓	3,10 €

*Subject to availability - Dimensions in mm

Our other products



F7-E

Multifunction display,
With external sensor



BAP25

Plastic clamping
collar, $\varnothing 25 - \varnothing 40$



M0

Worm and wheel set,
Bronze



CFES

Eccentric cam
follower, Eccentric



BDP1R

Adjustable support
arm, Single clamp



PRF_ART

Articulated bracket for
use with aluminium
profile, With clamping
ha...



CLQ

12.7mm wide steel
feeler strip on rolls,
Feeler strip on rolls



BPH

Ball transfer unit plain
fit, High



CHAR7520

Spring hinge, screwed



ECF

Well nut, Chloroprene
elastomer



WJUM16

Drylin® W bearing
block, Slide



GMK17_BROSSE

Brush strip, Cone-
shaped - brush

Complementary products



AC

Strike for toggle latch,
13mm