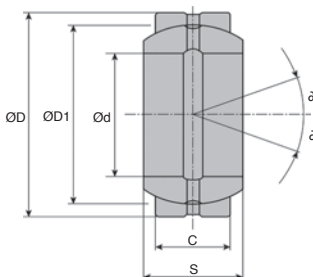


- DIN 648, series E, ISO 6124/1
- Material: steel

### Info.

- Requires maintenance



### DISCOUNTS

Qty	1+	6+	20+	40+	60+	100+
Disc.	List	-10%	-15%	-20%	-30%	On request

Part number	Ød	ØD	ØD1	S	C	δ	Load capacity		Weight (g)	Stock*	Price each 1 to 5
							static (N)	dynamic (N)			
GE15ES-2RS	15 <sup>+0.008</sup>	26 <sup>+0.009</sup>	22,0	12 <sup>+0.12</sup>	9 <sup>+0.24</sup>	8°	85000	17000	20	-	3,66 €
GE17ES-2RS	17 <sup>+0.008</sup>	30 <sup>+0.009</sup>	25,0	14 <sup>+0.12</sup>	10 <sup>+0.24</sup>	10°	106000	21200	40	✓	3,91 €
GE20ES-2RS	20 <sup>+0.010</sup>	35 <sup>+0.011</sup>	29,0	16 <sup>+0.12</sup>	12 <sup>+0.24</sup>	9°	146000	30000	60	✓	4,14 €
GE25ES-2RS	25 <sup>+0.010</sup>	42 <sup>+0.011</sup>	35,5	20 <sup>+0.12</sup>	16 <sup>+0.24</sup>	7°	240000	48000	110	✓	5,13 €
GE30ES-2RS	30 <sup>+0.010</sup>	47 <sup>+0.011</sup>	40,7	22 <sup>+0.12</sup>	18 <sup>+0.24</sup>	6°	310000	62000	140	✓	5,87 €
GE35ES-2RS	35 <sup>+0.012</sup>	55 <sup>+0.013</sup>	47,0	25 <sup>+0.12</sup>	20 <sup>+0.30</sup>	6°	400000	80000	220	✓	7,35 €
GE40ES-2RS	40 <sup>+0.012</sup>	62 <sup>+0.013</sup>	53,0	28 <sup>+0.12</sup>	22 <sup>+0.30</sup>	7°	500000	100000	300	✓	9,08 €
GE45ES-2RS	45 <sup>+0.012</sup>	68 <sup>+0.013</sup>	60,0	32 <sup>+0.12</sup>	25 <sup>+0.30</sup>	7°	640000	127000	400	-	10,79 €
GE50ES-2RS	50 <sup>+0.012</sup>	75 <sup>+0.013</sup>	66,0	35 <sup>+0.12</sup>	28 <sup>+0.30</sup>	6°	780000	156000	540	-	14,21 €
GE60ES-2RS	60 <sup>+0.015</sup>	90 <sup>+0.015</sup>	80,0	44 <sup>+0.15</sup>	36 <sup>+0.40</sup>	6°	1220000	245000	1000	-	22,12 €
GE70ES-2RS	70 <sup>+0.015</sup>	105 <sup>+0.015</sup>	92,0	49 <sup>+0.15</sup>	40 <sup>+0.40</sup>	6°	1560000	315000	1500	-	28,99 €
GE80ES-2RS	80 <sup>+0.015</sup>	120 <sup>+0.015</sup>	105,0	55 <sup>+0.15</sup>	45 <sup>+0.40</sup>	6°	2000000	400000	2200	-	45,73 €
GE90ES-2RS	90 <sup>+0.020</sup>	130 <sup>+0.018</sup>	115,0	60 <sup>+0.20</sup>	50 <sup>+0.50</sup>	5°	2450000	490000	2700	-	71,30 €
GE100ES-2RS	100 <sup>+0.020</sup>	150 <sup>+0.018</sup>	130,0	70 <sup>+0.20</sup>	55 <sup>+0.50</sup>	7°	3050000	610000	4300	-	95,92 €
GE110ES-2RS	110 <sup>+0.020</sup>	160 <sup>+0.025</sup>	140,0	70 <sup>+0.20</sup>	55 <sup>+0.50</sup>	6°	3250000	655000	4700	-	147,07 €

\*Depending on availability - Dimensions in mm

## Our other products



DOG111

Motor-gearbox 12V and 24V DC, from 1.5 to 6 Nm



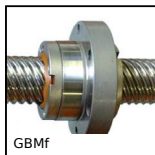
DOMI50

Connecting kits, XY linking kit



TCLar

Automatic chain tensioner, With wide guide



GBMf

Flanged leadscrew nut, Flanged nut - Multiple starts



PRF\_BASE

Base plate for aluminium profile, Base plate



EHD06

Internal epicyclic servo reducers, from 8 to 19 Nm



PRF-SRA

Lock for aluminium profile, Lock



SLB

Indexing plunger, steel class 5.8



PM3

Worm and wheel set, Hardened steel



LRR

Catch-plate for latch, Catch-plate



H1

Crossed helical gear crossed axis at 90°,



BAGtr

Lead screw clamping collar, Aluminium

## Complementary products



GE\_ES

Spherical bushing, Steel / steel



GE\_ET\_2RS

Spherical bushing, Hard chromium / Teflon contact with seals