

## GE5 GE18

### Standard and miniature versions

#### - Hook fastening

#### - Material:

White zinc steel or stainless steel 303

#### Assembly

- GE5-ZB and GE5-SS are used with AC121-ZB and AC121-SS hooks, dimension X = 77.5mm to withstand a tension up to 350N
- GE18-ZB and GE18-SS are used with AC118-ZB and AC118-SS hooks, dimension X = 31.1mm to withstand a tension up to 150N
- Dimension X taken on the first hole of the hook.

#### Advantages

- Very flexible

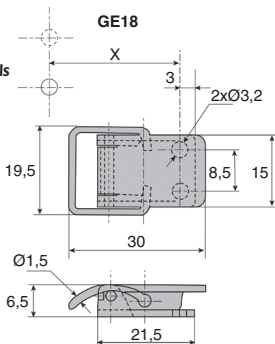
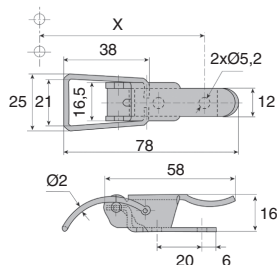
#### Info.

- Not sold individually, please contact us for details

#### Accessories

- Hooks AC121, AC118 (t.imagetome1 p.125)

steel or stainless steel



#### DISCOUNTS

Qty	1+	51+	101+	250+	400+	500+
Disc.	List	-10%	-15%	-20%	-25%	On request

Part number	Material	Wire Ø	Lever thickness mm	Back-plate thickness	Max. tension (N)	Weight (g)	Stock*	Price each 1 to 50
<b>Standard</b>								
GE5-ZB	steel	2,0	20/10th	20/10th	500	36,0	✓	3,24 €
GE5-SS	stainless steel	2,0	20/10th	20/10th	500	36,0	✓	6,55 €
<b>Miniature</b>								
GE18-ZB	steel	1,5	8/10th	10/10th	300	6,5	✓	1,92 €
GE18-SS	stainless steel	1,5	8/10th	10/10th	300	6,5	✓	3,10 €

\*Subject to availability - Dimensions in mm

## Our other products



RPP  
Connecting plate for  
RPP type timing belts,  
RPP8



BCM\_TP  
Modular cylindrical  
brush, Tampico  
bristles



DB  
Steel bevel gear, 2:1



BLHM30  
Right angled gearbox,  
double output shafts,  
up to 4.4 Nm



OP6  
Mechanical digital  
position indicator, 5  
numbers



SSB  
Stainless steel bevel  
gear, 1:1



SFE  
Female rod ends,  
Stainless steel / PTFE



OP3\_14\_06  
Reducing sleeve for  
OP indicators,  
Reduction socket



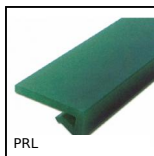
BOX-INS-W  
Box set of self tapping  
inserts, Boxed set -  
For wood



E40  
Right angle helical  
reducers, from 2.30 to  
20 Nm



BSPM  
Miniature ballscrew,  
Nut+rolled ballscrew



PRL  
Wear strip for slat top  
chain, L profile to be  
clipped

## Complementary products



AC  
Strike for toggle latch,  
18mm



GAC  
Latch clamp with lock,  
Lockable



GP75  
Spring loaded toggle  
latch, Standard  
(GP75)



GE32  
Sprung toggle latch  
with connecting link,  
Standard