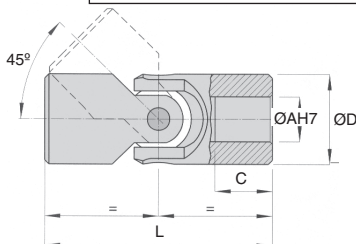
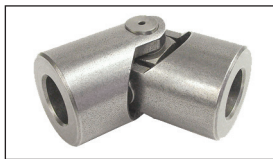


G Industrial range

- Standard series in accordance with DIN 808-7551
- Smooth hardened bushes
- Suitable for speeds up to 800 rpm
- Max. misalignment angle 45°
- Materials:
 - Body: C45 steel
 - Pin: Hardened steel 18NCD4



Accessories

- Optional rubber cover

Modifiable bore



Angle	Factor
5°	1,25
10°	1,00
20°	0,75
30°	0,45
40°	0,30

Effect of operating angle

The torques below are given for a 10° angle. For other angles, the appropriate factor from this table should be applied.

E.g. For 100Nm to be transmitted at 20°, the corrected value of torque becomes $100/0.75 = 133$ Nm and a joint should be chosen that can transmit 133Nm at the required speed.

DISCOUNTS

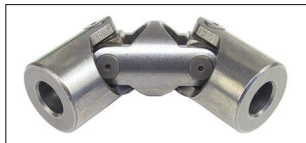
Qty	1+	2+	4+	10+
Disc.	List -6%	-12%	On request	

Part number	ØD	ØA	C	L	Torque (Nm)						Stock*	Price each	
					at 100 rpm	at 200 rpm	at 300 rpm	at 400 rpm	at 500 rpm	at 700 rpm			at 800 rpm
G01-A-6/6	16	6	9	34	-	-	-	-	-	-	-	✓	28,95 €
G02-A-8/8	16	8	11	40	-	-	-	-	-	-	-	✓	28,95 €
G03-A-10/10	20	10	10	45	32,5	22,1	18,8	16,9	15,6	14,3	9,7	✓	30,10 €
G04-A-12/12	25	12	11	50	55,9	32,5	26,6	22,1	20,1	16,9	15,6	✓	32,85 €
G05-A-14/14	29	14	13	56	89,1	55,9	51,3	46,8	43,5	37,1	34,4	✓	34,91 €
G1-A-16/16	32	16	15	65	112,4	109,2	93,6	74,7	66,9	53,3	46,8	✓	36,08 €
G2-A-18/18	37	18	17	72	202,8	156,0	124,8	93,6	78,0	62,4	-	✓	41,89 €
G3-A-20/20	40	20	19	82	312,0	218,4	156,0	124,8	109,2	78,0	-	✓	49,52 €
G4-A-22/22	47	22	22	95	390,0	249,6	187,2	156,0	124,8	93,6	-	✓	59,43 €
G5-A-25/25	50	25	26	108	499,2	312,0	218,4	187,2	156,0	124,8	-	✓	70,06 €
G6-A-30/30	58	30	30	122	561,6	343,2	249,6	202,8	171,6	-	-	✓	89,69 €
G61-A-32/32	63	32	30	130	561,6	343,2	249,6	202,8	171,6	-	-	-	On request
G7-A-35/35	70	35	35	140	592,8	390,0	296,4	226,2	187,2	-	-	-	On request
G8-A-40/40	80	40	42	160	655,2	436,8	343,2	280,8	-	-	-	-	On request
G9-A-50/50	95	50	54	190	936,0	624,0	436,8	343,2	-	-	-	-	On request

*Depending on availability - Dimensions in mm



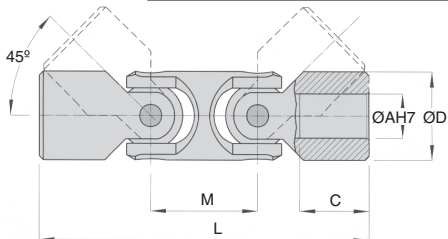
- Standard series in accordance with DIN 808-7551
- Smooth hardened bushes
- Suitable for speeds up to 800 rpm
- Max. misalignment angle 45°
- Materials:
 - Body: C45 steel
 - Pin: Hardened steel 18NCD4



Accessories

- Optional rubber cover

Modifiable bore



Effect of operating angle

The torques below are given for a 10° angle. For other angles, the appropriate factor from this table should be applied.

E.g. For 100Nm to be transmitted at 20°, the corrected value of torque becomes $100/0.75 = 133$ Nm and a joint should be chosen that can transmit 133Nm at the required speed.

Angle	Factor
5°	1,25
10°	1,00
20°	0,75
30°	0,45
40°	0,30

DISCOUNTS

Qty	1+	2+	4+
Disc.	List	-6%	On request

Part number	ØD	ØA	C	M	L	Torque (Nm)								Price each	
						at 100 rpm	at 200 rpm	at 300 rpm	at 400 rpm	at 500 rpm	at 700 rpm	at 800 rpm	Stock*		
GD01-A-6/6	16	6	9	27	61	-	-	-	-	-	-	-	-	✓	58,04 €
GD02-A-8/8	16	8	11	27	67	-	-	-	-	-	-	-	-	✓	58,04 €
GD03-A-10/10	20	10	10	30	75	-	-	-	-	-	-	-	-	✓	60,92 €
GD04-A-12/12	22	12	11	29	74	32,5	22,1	18,8	16,9	15,6	14,3	9,7	-	✓	60,92 €
GD05-A-14/14	25	14	13	33	85	55,9	32,5	26,6	22,1	20,1	16,9	15,6	-	✓	68,25 €
GD1-A-16/16	29	16	19	35	100	89,1	55,9	51,3	46,8	43,5	37,1	34,4	-	✓	72,87 €
GD2-A-18/18	32	18	20	39	112	112,4	109,2	93,6	74,7	66,9	53,3	46,8	-	✓	87,86 €
GD3-A-20/20	40	20	19	46	128	312,0	218,4	156,0	124,8	109,2	78,0	-	-	✓	97,02 €
GD4-A-22/22	40	22	25	48	145	312,0	218,4	156,0	124,8	109,2	78,0	-	-	-	130,13 €
GD5-A-25/25	50	25	24	59	163	499,2	312,0	218,4	187,2	156,0	124,8	-	-	✓	159,05 €
GD6-A-30/30	58	30	28	66	182	561,6	343,2	249,6	202,8	171,6	-	-	-	-	188,96 €
GD61-A-32/32	63	32	30	84	198	561,6	343,2	249,6	202,8	171,6	-	-	-	-	On request
GD7-A-35/35	70	35	32	78	212	592,8	390,0	296,4	226,2	187,2	-	-	-	-	On request
GD8-A-40/40	80	40	38	95	245	655,2	436,8	343,2	280,8	-	-	-	-	-	On request
GD9-A-50/50	95	50	50	120	290	936,0	624,0	436,8	343,2	-	-	-	-	-	On request

*Depending on availability - Dimensions in mm

Our other products



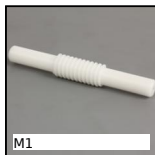
BFA

Shaft locking washer,
E clip



CHAGC-AL

Screw-in garnet
hinge, Screw-on



M1

Worm and wheel set,
Machined plastic
(delrin)



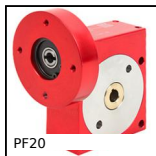
SVT5

Screwjack with
travelling screw, with
translating screw



TCL-ECL

Adjusting nut, Fine
thread



PF20

Worm and wheel gear
reducer, up to 5 Nm



BLH60

Right angled gearbox,
from 19 to 70 Nm



FF15

Offset spur gear
reducer, from 2.20 to
10 Nm



GSI_A

Stainless steel
adjustable gas spring,



LACM_SS

Stainless steel cam
lever, Female



CHB

Feet, For CHB gearbox



GTC

Belt tensioner, For
standard applications

Complementary products



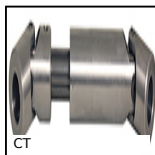
M

Bellows cover,
Accessory:



G01

Single universal joint,
Normal duty



CT

Telescopic universal
joint, Normal duty