

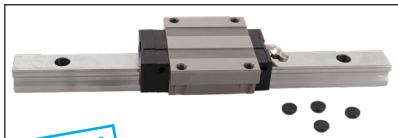
Linear ball slide **Eco range**



GCH15 GCH20

Dynamic load from 12600N to 21800N

- Linear slide unit for heavy loads not subject to vibrations or shocks
- Recirculating ball type linear slide
- Self-lubricated slide units
- Material:
Steel
- Note: part numbers of rails and slide units are separate: remember to order both

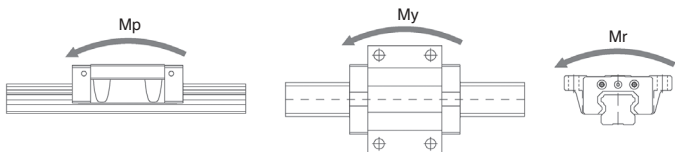
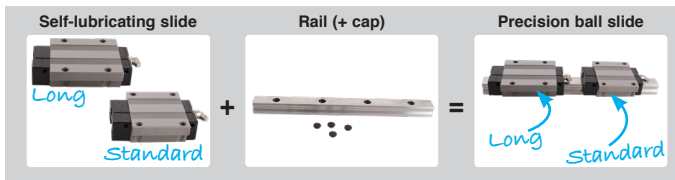


NEW!

Self-lubricating slide + Rail

Application

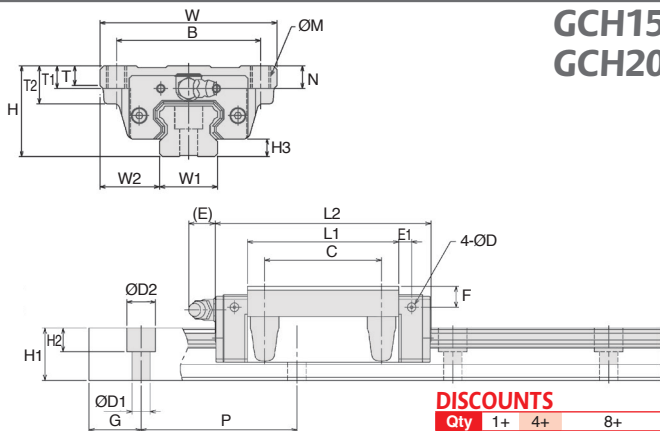
- Machine tool, CNC machine, automation device, industrial robot various industrial machine



Part number	Type	Basic load rating		Static allowance moment (kN-m)				Mass		
		C (N)	Co (N)	Mp	My	Mr	Slide (kg)	Rail (kg/m)		
GCH15-1LF	Standard	12.6	16.2	0.115	0.552	0.115	0.552	0.129	0.19	1.3
GCH20-1LF	Standard	18.3	23.9	0.221	1.049	0.221	1.049	0.251	0.41	2.2
GCH20G-1LF	Long	21.8	30.7	0.370	1.692	0.370	1.692	0.322	0.54	2.2

All dimensions in mm

GCH15 GCH20



DISCOUNTS

Qty	1+	4+	8+
Disc.	List	-6%	On request

Self-lubricated slide units

Part number	Type	H	W	L2	B	C	ØM	L1	T2	T	T1
GCH15-1LF	Standard	24	47	56.5	38	30	M5	40.8	-	7.0	11
GCH20-1LF	Standard	30	63	73.2	53	40	M6	53.1	-	9.2	10
GCH20G-1LF	Long	30	63	89.1	53	40	M6	69.0	-	9.2	10

Part number	N	E	F	E1	D	Grease Nipple	H3	Price Each 1 to 3
GCH15-1LF	6.0	4.7	3.7	3.25	3.3	A-M5	4.5	46.60 €
GCH20-1LF	7.5	10.7	6.7	4.25	3.3	B-M6F	6.0	55.15 €
GCH20G-1LF	7.5	10.7	6.7	4.25	3.3	B-M6F	6.0	76.10 €

Rail

Part number	W1 ±0.05	Length L	W2	H1	G	Pitch P	Ø D1	Ø D2	H2	Mass (kg)	Price Each 1 to 3
GCH15-180	15	180	16.0	13.0	20	60	4.5	7.5	5.3	0.234	18.40 €
GCH15-360	15	360	16.0	13.0	20	60	4.5	7.5	5.3	0.468	36.78 €
GCH15-480	15	480	16.0	13.0	20	60	4.5	7.5	5.3	0.624	49.05 €
GCH15-660	15	660	16.0	13.0	20	60	4.5	7.5	5.3	0.858	67.43 €
GCH15-900	15	900	16.0	13.0	20	60	4.5	7.5	5.3	1.170	91.95 €
GCH15-1200	15	1200	16.0	13.0	20	60	4.5	7.5	5.3	1.560	122.60 €
GCH15-1500	15	1500	16.0	13.0	20	60	4.5	7.5	5.3	1.950	153.28 €
GCH15-2400	15	2400	16.0	13.0	20	60	4.5	7.5	5.3	3.120	245.20 €
GCH20-240	20	240	21.5	16.5	20	60	6.0	9.5	8.5	0.528	26.83 €
GCH20-480	20	480	21.5	16.5	20	60	6.0	9.5	8.5	1.056	53.65 €
GCH20-660	20	660	21.5	16.5	20	60	6.0	9.5	8.5	1.452	73.78 €
GCH20-840	20	840	21.5	16.5	20	60	6.0	9.5	8.5	1.848	93.90 €
GCH20-1020	20	1020	21.5	16.5	20	60	6.0	9.5	8.5	2.244	114.00 €
GCH20-1200	20	1200	21.5	16.5	20	60	6.0	9.5	8.5	2.640	134.13 €
GCH20-1500	20	1500	21.5	16.5	20	60	6.0	9.5	8.5	3.300	167.68 €
GCH20-1980	20	1980	21.5	16.5	20	60	6.0	9.5	8.5	4.356	221.33 €

All dimensions in mm

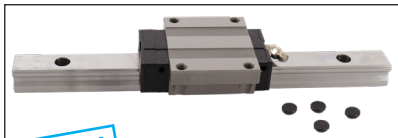
Linear ball slide **Eco range**



GCH25 GCH30

Dynamic load from 27000N to 60300N

- Linear slide unit for heavy loads not subject to vibrations or shocks
- Recirculating ball type linear slide
- Self-lubricated slide units
- Material:
Steel
- Note: part numbers of rails and slide units are separate: remember to order both

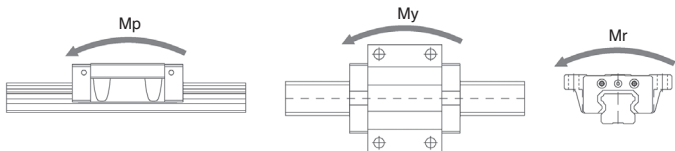
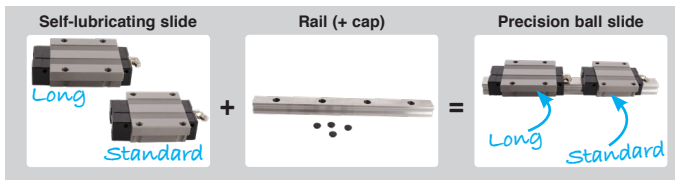


NEW!

Self-lubricating slide + Rail

Application

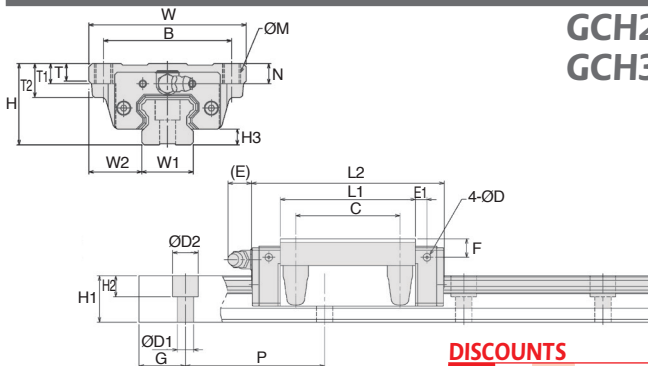
- Machine tool, CNC machine, automation device, industrial robot various industrial machine



Part number	Type	Basic load rating		Static allowance moment (kN-m)				Mass		
		C (N)	Co (N)	Mp	My	Mr	Slide (kg)	Rail (kg/m)		
GCH25-1LF	Standard	27,0	33,1	0,337	1,636	0,337	1,636	0,398	0,61	3,0
GCH25G-1LF	Long	32,8	43,6	0,596	2,760	0,596	2,760	0,525	0,82	3,0
GCH30-1LF	Standard	50,4	57,1	0,711	3,384	0,711	3,384	0,828	1,1	4,85
GCH30G-1LF	Long	60,3	73,6	1,203	5,506	1,203	5,506	1,067	1,3	4,85

All dimensions in mm

GCH25 GCH30



DISCOUNTS

Qty	1+	4+	8+
Disc.	List	-6%	On request

Self-lubricated slide units

Part number	Type	H	W	L2	B	C	ØM	L1	T2	T	T1
GCH25-1LF	Standard	36	70	83,2	57	45	M8	58,3	-	11,5	16
GCH25G-1LF	Long	36	70	103,1	57	45	M8	78,2	-	11,5	16
GCH30-1LF	Standard	42	90	99,3	72	52	M10	70,8	-	9,5	18
GCH30G-1LF	Long	42	90	121,5	72	52	M10	93,0	-	9,5	18

Part number	N	E	F	E1	D	Grease Nipple	H3	Price Each 1 to 3
GCH25-1LF	9,0	10,2	8	5,0	3,3	B-M6F	7,0	70,08 €
GCH25G-1LF	9,0	10,2	8	5,0	3,3	B-M6F	7,0	97,63 €
GCH30-1LF	7,3	9,8	5	5,8	5,2	B-M6F	7,5	83,00 €
GCH30G-1LF	7,3	9,8	5	5,8	5,2	B-M6F	7,5	104,75 €

Rail

Part number	W1 ±0.05	Length L	W2	H1	G	Pitch P	Ø D1	Ø D2	H2	Mass (kg)	Price Each 1 to 3
GCH25-240	23	240	23,5	20,0	20	60	7	11	9	0,720	29,88 €
GCH25-480	23	480	23,5	20,0	20	60	7	11	9	1,440	59,75 €
GCH25-660	23	660	23,5	20,0	20	60	7	11	9	1,980	82,18 €
GCH25-840	23	840	23,5	20,0	20	60	7	11	9	2,520	104,58 €
GCH25-1020	23	1020	23,5	20,0	20	60	7	11	9	3,060	127,00 €
GCH25-1200	23	1200	23,5	20,0	20	60	7	11	9	3,600	149,40 €
GCH25-1500	23	1500	23,5	20,0	20	60	7	11	9	4,500	186,75 €
GCH25-1980	23	1980	23,5	20,0	20	60	7	11	9	5,940	246,50 €
GCH25-3000	23	3000	23,5	20,0	20	60	7	11	9	9,000	373,50 €
GCH30-480	28	480	31,0	26,0	20	80	9	14	12	2,328	69,15 €
GCH30-640	28	640	31,0	26,0	20	80	9	14	12	3,104	92,20 €
GCH30-800	28	800	31,0	26,0	20	80	9	14	12	3,880	115,25 €
GCH30-1040	28	1040	31,0	26,0	20	80	9	14	12	5,044	149,80 €
GCH30-1200	28	1200	31,0	26,0	20	80	9	14	12	5,820	172,85 €
GCH30-1520	28	1520	31,0	26,0	20	80	9	14	12	7,372	218,95 €
GCH30-2000	28	2000	31,0	26,0	20	80	9	14	12	9,700	288,10 €
GCH30-2960	28	2960	31,0	26,0	20	80	9	14	12	14,356	426,40 €

All dimensions in mm

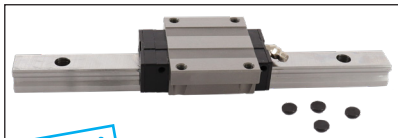
Linear ball slide **Eco range**



GCH35 GCH45

Dynamic load from
67000N to 129700N

- Linear slide unit for heavy loads not subject to vibrations or shocks
- Recirculating ball type linear slide
- Self-lubricated slide units
- Material:
Steel
- Note: part numbers of rails and slide units are separate: remember to order both

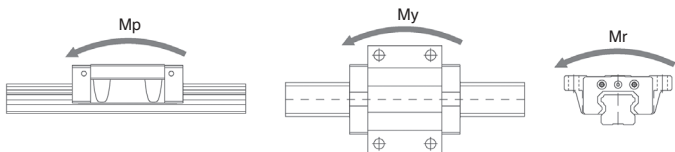
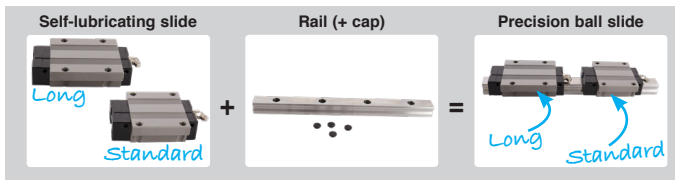


NEW!

Self-lubricating slide + Rail

Application

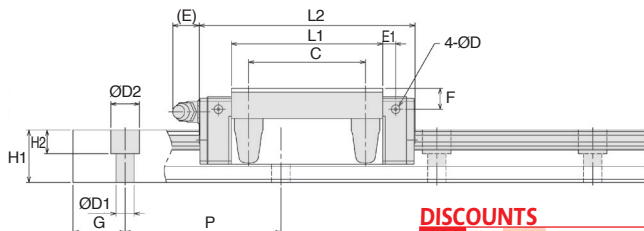
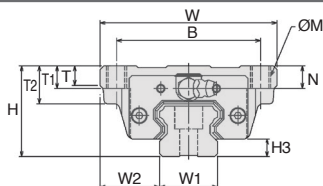
- Machine tool, CNC machine, automation device, industrial robot various industrial machine



Part number	Type	Basic load rating		Static allowance moment (kN-m)				Mass		
		C (N)	Co (N)	Mp	My	Mr	Slide (kg)	Rail (kg/m)		
GCH35-1LF	Standard	67,0	74,6	1,062	5,012	1,062	5,012	1,298	1,60	6,58
GCH35G-1LF	Long	80,2	96,2	1,797	8,172	1,797	8,172	1,674	2,01	6,58
GCH45-1LF	Standard	108,5	116,4	2,860	9,912	2,860	9,912	2,275	2,83	11,03
GCH45G-1LF	Long	129,7	150,1	4,533	16,161	4,533	16,161	2,935	3,70	11,03

All dimensions in mm

GCH35 GCH45



DISCOUNTS

Qty	1+	4+	8+
Disc.	List	-6%	On request

Self-lubricated slide units

Part number	Type	H	W	L2	B	C	ØM	L1	T2	T	T1
GCH35-1LF	Standard	48	100	111,8	82	62	M10	80,8	-	12,5	21
GCH35G-1LF	Long	48	100	137,2	82	62	M10	106,2	-	12,5	21
GCH45-1LF	Standard	60	120	139,0	100	80	M12	101,9	25	13,0	15
GCH45G-1LF	Long	60	120	170,8	100	80	M12	133,7	25	13,0	15

Part number	N	E	F	E1	D	Grease Nipple	H3	Price Each 1 to 3
GCH35-1LF	8	9,7	6,5	6,5	5,2	B-M6F	9	113,55 €
GCH35G-1LF	8	9,7	6,5	6,5	5,2	B-M6F	9	157,43 €
GCH45-1LF	10	16,0	8,0	8,0	3,3	B-PT1/8	10	143,53 €
GCH45G-1LF	10	16,0	8,0	8,0	3,3	B-PT1/8	10	179,28 €

Rail

Part number	W1 ±0.05	Length L	W2	H1	Pitch G	Ø P	Ø D1	Ø D2	H2	Mass (kg)	Price Each 1 to 3
GCH35-480	34	480	33,0	29	20,0	80	9	14	12	3,158	89,35 €
GCH35-640	34	640	33,0	29	20,0	80	9	14	12	4,211	119,13 €
GCH35-800	34	800	33,0	29	20,0	80	9	14	12	5,264	148,93 €
GCH35-1040	34	1040	33,0	29	20,0	80	9	14	12	6,843	193,60 €
GCH35-1200	34	1200	33,0	29	20,0	80	9	14	12	7,896	223,38 €
GCH35-1520	34	1520	33,0	29	20,0	80	9	14	12	10,002	282,95 €
GCH35-2960	34	2960	33,0	29	20,0	80	9	14	12	19,477	551,00 €
GCH45-840	45	840	37,5	38	22,5	105	14	20	17	9,265	225,33 €
GCH45-1050	45	1050	37,5	38	22,5	105	14	20	17	11,582	281,68 €
GCH45-1260	45	1260	37,5	38	22,5	105	14	20	17	13,898	338,00 €
GCH45-1470	45	1470	37,5	38	22,5	105	14	20	17	16,214	394,33 €
GCH45-1995	45	1995	37,5	38	22,5	105	14	20	17	22,005	535,15 €
GCH45-2940	45	2940	37,5	38	22,5	105	14	20	17	32,428	788,65 €

All dimensions in mm

Our other products



CHTRP

Single and dual output gearboxes, Up to 28,8 Nm



BSM

Spring plunger with internal hexagonal socket, steel body and pin



RAG-12-M8

Roller guide accessory, Anchoring system



PRES2HR

Manual workbench press, Force up to 200kg



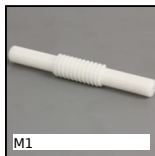
PRF_PIV

Internal hinge pin for aluminium profile, Internal hinge pin



PTA100ssEB

Articulated foot with sheet metal base Ø100, Articulated foot



M1

Worm and wheel set, Machined plastic (delrin)



GPLbr

Brush, brass



SHN

Hexagonal nut DIN934, Steel (Class 6|8|)



PSP

Support profile, Panel support



KK

Rounded end feather key, Steel



ZG2

Plastic spur gear, Machined plastic (delrin)

Complementary products



GCH

Linear ball slide - Stainless steel balls, Chariot - from 514 N to 1...