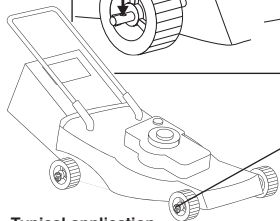
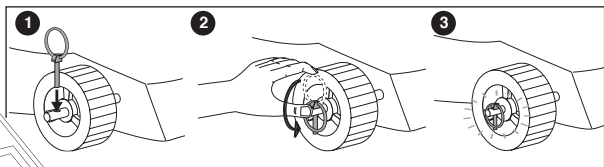
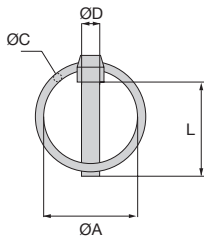




- Low cost clip
- Made from zinc plated steel
- Supplied by the packet

Advantages

- Manual assembly/disassembly



Typical application

INCREASED STOCK

DISCOUNTS

Qty	1+	5+	10+	21+
Disc.	List	-10%	-20%	On request

Part number	ØD	L	ØA	ØC	Weight per 100 (kg)	Quantity per pack	Stock*	Price each 1 to 4
GCA4.5-3/B	4,5	42	34	3	1,31	100	✓	42,50 €
GCA6-3.5/B	6	42	41	3,5	2,30	50	✓	21,86 €
GCA7-3.5/B	7	42	41	3,5	2,65	50	✓	22,21 €
GCA8-3.5/B	8	42	41	3,5	2,91	50	✓	25,66 €
GCA9-3.5/B	9	42	41	3,5	3,55	50	-	27,65 €
GCA10-3.5/B	10	42	41	3,5	4,27	50	✓	29,03 €
GCA11-3.5/B	11	42	41	3,5	4,77	50	-	30,46 €

*Depending on availability - Dimensions in mm

Our other products



TPEpbd

Castor for aluminium profile, Swivel with brake



HTD8M_30

HTD Heavy duty timing pulley, HTD8 Steel



RJUM01

Closed polymer Drylin® R bearing, Drylin® R



H1

Crossed helical gear crossed axis at 90°, Steel 20NCD2



DOMI80

Connecting kits, XZ linking kit



BOX-TOR-TOOL

Box set of tool for Nitrile O-rings, Extraction tools



ALIDRP240

24V DC power supply, 10 A



SEV

Vertical stirrup toggle clamp, Vertical Latch Clamp - steel



NCT

Square tube connector, Fixed



KB_OP

Open precision linear bearing, Precision -



DOMI50

Connecting kits, XY linking kit



DOMI80

Accessories, Fixing kit

Complementary products



GCT

Pipe lynch pin, Tube lynch pin



AFA

Locking pin, with ring