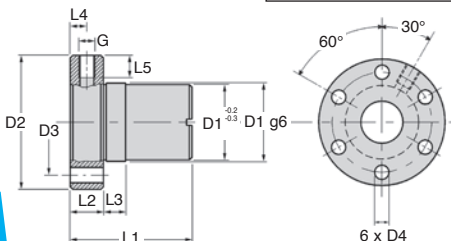
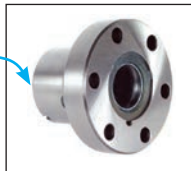
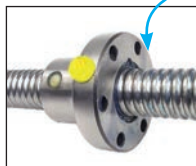


- Nut for ballscrew
- Axial backlash:
0.05mm for a 5mm pitch
0.1mm for a 10mm pitch
- Material: Steel MnCr5 or 100Cr6

Accessories

- See KGS screw



Extended range,
new sizes available

DISCOUNTS

Qty	1+	2+	6+	11+
Disc.	List	-7%	-13%	On request

Part number	D1 g6	D2 h13	D3	D4	L1	L2	L3	L4	L5	G
GBS-F-1605-RH	28	48	38	5,5	44	12	8	6	8	M6
GBS-F-2005-RH	32	55	45	7,0	44	12	8	6	8	M6
GBS-F-2505-RH	38	62	50	7,0	46	14	8	7	8	M6
GBS-F-3205-RH	45	70	58	7,0	59	16	10	8	8	M6
GBS-F-3210-RH	53	80	68	7,0	73	16	10	8	8	M8 x 1
GBS-F-4005-RH	53	80	68	7,0	59	16	10	8	8	M6
GBS-F-4010-RH	63	95	78	9,0	73	16	10	8	8	M8 x 1

Part number	For screw Ø	Movement per turn (mm)	dynamic C (kN)	Load static Co (kN)	Weight (kg)	Stock*	Price each
GBS-F-1605-RH	16	5	7,0	12,7	0,20	✓	203,75 €
GBS-F-2005-RH	20	5	7,0	17,0	0,25	✓	207,78 €
GBS-F-2505-RH	25	5	9,5	22,4	0,35	✓	253,43 €
GBS-F-3205-RH	32	5	17,0	49,0	0,55	✓	334,00 €
GBS-F-3210-RH	32	10	25,7	56,0	0,90	✓	348,06 €
GBS-F-4005-RH	40	5	19,0	63,5	0,80	✓	337,41 €
GBS-F-4010-RH	40	10	30,0	70,0	1,20	-	399,02 €

*Depending on availability - Dimensions in mm

Our other products



PRF_CH

Cable-carrier chain for aluminium profile, Supplied in metre lengths



GLB

Small 6 lobe threaded handle - female, Technopolymer - Stainless steel



BLHB50

Right angled gearbox, bored shafts, up to 30 Nm



Q3

Double row angular contact ball bearing, Angular contact - Steel



PCS50K

Chain sprocket with hardened teeth, 12.7mm (DIN08B-1)



DGS1

Female rod ends, Steel / steel - Economy range



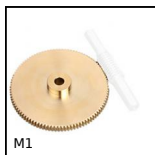
DOMI80

Accessories, Turntable



GLT3-46A

Telescopic drawer with damper,



M1

Worm and wheel set, Bronze



PSG2

Spur gear - precision range, Pre-hardened Steel 35NCD6



RJA00_28

Sealing strip, Clipping



CCLSS

Stainless steel wire thimble, Stainless steel

Complementary products



KGS

Ballscrew, supplied by the metre, Rolled ballscrew, per metre



BSB

Ballscrew bearing unit, Support



GBSz

Cylindrical ballscrew nut, Cylindrical leadscrew nut