

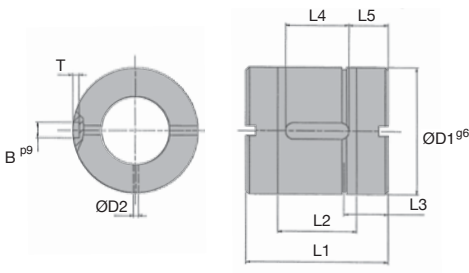
- Nut for ballscrew
- Multiple starts
- Axial backlash: 0.2mm
- Material:
16 MnCr5 or 100Cr6

Accessory

- See KGS ballscrew (the pitch and the diameter must be identical to those of the nut)

GBM nut

Multiple starts



DISCOUNTS

Qty	1+	2+	6+	11+
Disc.	List	-7%	-13%	On request

Part number	ØD1g6	ØD2	L1	L2	L3	L4	L5	BxT
GBM-Z-2020-RH	35	1,5	30	14	11,50	12	9	5x3
GBM-Z-2050-RH	35	1,5	56	40	14	20	18	5x2
GBM-Z-3220-RH	53	1,5	55	35	16	20	17,5	6x4
GBM-Z-3240-RH	53	1,5	50	30	16	25	12,5	6x4
GBM-Z-5020-RH	85	1,5	73,50	50	16,75	30	22	6x2,5

Part number	For screw Ø	Movement per rev (mm)	Load dynamic C (kN)	Load static Co (kN)	Weight (kg)	Price each
GBM-Z-2020-RH	20	20	9,00	19,10	0,15	445,63 €
GBM-Z-2050-RH	20	50	7,90	19,00	0,30	487,14 €
GBM-Z-3220-RH	32	20	19,50	65,00	0,50	595,84 €
GBM-Z-3240-RH	32	40	11,50	33,50	0,45	598,93 €
GBM-Z-5020-RH	50	20	61,70	178,40	1,40	1060,26 €

*Subject to available stock - Dimensions in mm

Our other products



MAX26
Motor-gearbox 12V
and 24V DC, from
0,075 to 0,6Nm



SSB
Stainless steel bevel
gear, 1:1



BOX-TOR-B
Box set of Nitrile O-
rings in nitrile, 20.38 x
1.78mm to 50.16 x
5.34



SHW
Plain washer, Steel



UTKpwrr
V shaped channel
UtiliTrak®, V rail



HG5-ECO
Eco range Spur gear,
Steel C45



SH2
Parallel axis helical
gear, Machined plastic
(delrin)



GEC
Rubber latch clamp
with strike plate,
Lockable



BTESS
Universal stainless
steel arm for



CABtool
Fitting cable tools,
Crimping tools

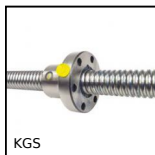


ACLBMC
Detector support for
aluminium profile,



F7-SN
Multifunction display,
Articulated support

Complementary products



KGS
Ballscrew, supplied by
the metre, Rolled
ballscrew, per metre