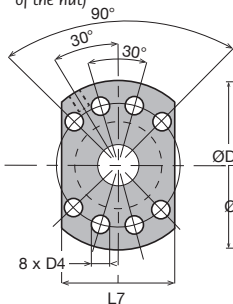
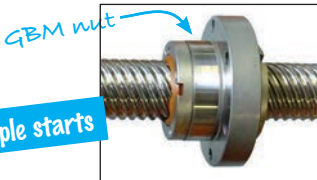


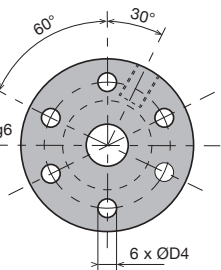
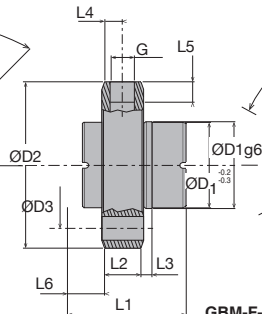
- Nut for ballscrew
- Multiple starts
- Axial backlash: 0.2mm
- Material:  
16 MnCr5 or 100Cr6

### Accessories

- See **KGS** ballscrew (the pitch and the diameter must be identical to those of the nut)



GBM-F-5020-RH



GBM-F-2020-RH to GBM-F-3240-RH

### DISCOUNTS

Qty	1+	2+	6+	11+
Disc.	List	-7%	-13%	On request

Part number	ØD1g6	ØD2h13	ØD3	ØD4	L1	L2	L3	L4	L5	L6	L7	G
GBM-F-2020-RH	35	62	50	7	30	10	4	5	8	8	-	M6
GBM-F-2050-RH	35	62	50	7	56	10	30	5	8	8	-	M6
GBM-F-3220-RH	53	80	68	7	55	16	19	8	10	10	-	M6
GBM-F-3240-RH	53	80	68	7	50	16	14	8	10	10	-	M6
GBM-F-5020-RH	85	125	103	11	80	18	38,75	9	10	5	95	M8x1

Part number	For Movement		Load		Weight (kg)	Price each
	lead screw Ø	per rev (mm)	dynamic C (kN)	static Co (kN)		
GBM-F-2020-RH	20	20	9,00	19,10	0,25	538,30 €
GBM-F-2050-RH	20	50	7,90	19,00	0,40	643,48 €
GBM-F-3220-RH	32	20	19,50	65,00	0,50	680,84 €
GBM-F-3240-RH	32	40	11,50	33,50	0,50	689,85 €
GBM-F-5020-RH	50	20	61,70	178,40	2,00	1 128,95 €

\* Subject to available stock - Dimensions in mm

## Our other products



ACL-FPA  
Panel mounting block for aluminium structures, Support block



SEH  
Horizontal stirrup toggle clamp, Horizontal stirrup clamp - steel



VB  
Small 6 lobe threaded handle - female, Duroplast - Brass



TBV  
Manual lifting tables, 7kg



CLSCLP\_SS  
Clevis components, short version, Stainless steel - short range



KGS  
Ballscrew, supplied by the metre, Rolled ballscrew, per metre



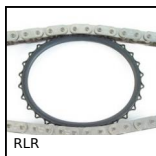
PCS8ECO  
Chain sprocket - steel, 8mm (DIN 05B-1)



PGM52-M4  
Pull handle, Aluminium



PMB  
Anti-vibration machine mount, Oval



RLR  
Roll-Ring® chain tensioner, Roll-Ring®



SCR  
Suction cup threaded insert, Adaptor for



AC144  
Strike for toggle latch, 22mm

## Complementary products



KGS  
Ballscrew, supplied by the metre, Rolled ballscrew, per metre