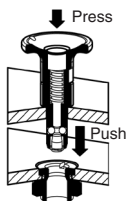


Lock pin for clamping

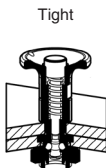
GAR

Introduction

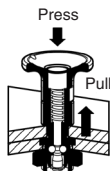
The **locking pins** are ergonomic items designed for the quick clamping of 2 plates. The system can be used for tool changing devices in the assembly area or for other manual movements, such as conversion to automatic installations. The **GAR-BAB** are lock pins based on the principle of a ball lock pin, offering excellent grip and easy handling. The **GAR-QT** are based on a quarter turn lock, with an On/Off indication. Although the model **GAR-DLL** can be used without the mounting sleeves, they still allow optimum use of the lock pins.



Button pressed, insert the locking pin into the fixing sleeve

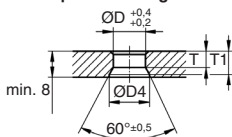


Release the button to clamp the plates



To remove, button pressed, pull the locking pin out of the fixing sleeve.

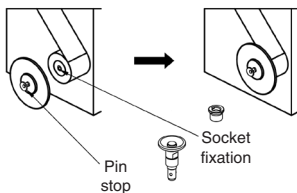
Use without fixing sleeve Counterpart mounting dimensions



For locking pins

ØD=	ØD	ØD4 min.	T	T1
6	6	12,5	4,9	~6,6
10	10	8	5	~7,2

Example of use Quick mounting and removal of folded edge plates for paper rolls..



Lock pin for clamping

GARBAB

Ball lock pin type

- **Ball lock pins for clamping**
- Locking element
- Materials :
 - Body and button, nickel-plated steel .
 - Spring, balls and retaining ring in stainless steel
 - O-ring FKM
- Working temperature: max 180°C

Advantages

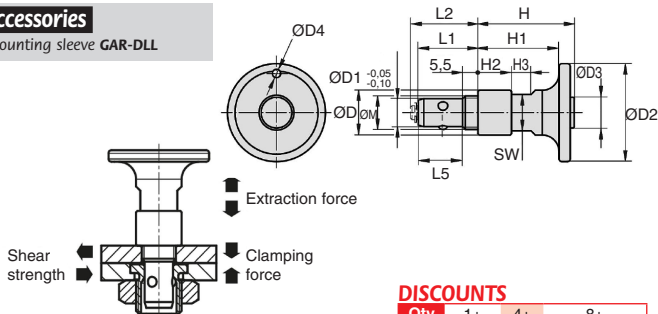
- Allows tool-free locking or unlocking and without screws by simple pressing.
- Saves time by avoiding the handling of tools.

Infos

- The specified forces apply only for use with the **GAR-DLL** sleeves.

Accessories

- Mounting sleeve **GAR-DLL**



DISCOUNTS

Qty	1+	4+	8+
Disc.	Price	-5%	On request

Part number	ØD	ØD1	ØD2	ØD3	ØD4	ØM	L1	L2	L5	H	H1
GAR6-10/BAB	12	6	25	8	-	M8	19.0	21	13.5	22.2	18
GAR10-16/BAB	16	10	35	11	3	M12x1.5	21.5	23.5	16.0	34.4	29
Part number	H2	H3	SW	ØD5	ØD6	Tmax	Clamping force (N)	Shear strength (kN)	Extraction force (kN)	Price per unit 1 to 3	
GAR6-10/BAB	6	5.5	10	80	13	10	30	3	0.5	47,70 €	
GAR10-16/BAB	12	7.0	13	12	17	16	50	9	1.5	49,06 €	

Dimensions in mm

HPC

WEB
04/2021

www.hpceurope.com

Tél: 0 825 88 5000 Service 0,15€/min + prix appel

Mounting sleeve for lock pin

Makes it easy to hold the lock pins **GARDLL**

- Sleeve for locking pin GAR
- Surface mounted or flush mounted in a counter-bored hole
- Materials:
 - Nickel-plated steel
 - Stainless steel

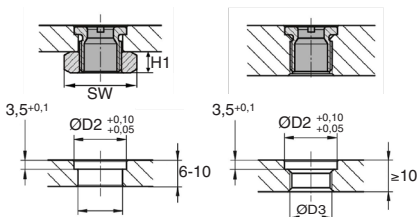


Advantages

- Allows optimum retention of the locking pins GAR.

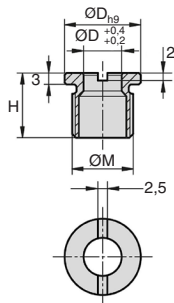
Accessories

- Quarter-turn lock pins GAR-QT and the lock pins GAR-BAB



Mounting form A
for plates with a 10 mm
thickness

Mounting form B
for plates thicker than
10mm or in a blind hole



DISCOUNTS

Qty	1+	4+	8+
Disc. Price	-	-5%	On request

Part number	ØD	ØD1	ØM	H	ØD2	ØD3	H1	SW	Price per unit 1 to 3
Steel									
GAR6-DLL	6	16	M12x1.5	15	16	13	-	-	7,51 €
GAR10-DLL	10	20	M16x1.5	17	20	17	-	-	8,17 €
DLL-M12-EC	Nut for GAR6-DLL						6	19	0,51 €
DLL-M16-EC	Nut for GAR10-DLL						8	24	0,69 €
Stainless steel									
GAR6-DLL/SS	6	16	M12x1.5	15	16	13	-	-	10,88 €
GAR10-DLL/SS	10	20	M16x1.5	17	20	17	-	-	13,63 €
DLL-M12-EC/SS	Nut for GAR6-DLL/SS						6	19	0,57 €
DLL-M16-EC/SS	Nut for GAR10-DLL/SS						8	24	0,99 €
Assembly tools									
DLL-M16-TOOL	Tools for GAR6-DLL and GAR10-DLL								20,81 €

Dimensions in mm

Lock pin for clamping

GARQT

Quarter turn type

- **Quarter turn pin for clamping**
- Locking element
- Materials :
 - Nickel-plated steel body.
 - Spring and balls in stainless steel
 - Button in black PA polyamide (glass-fibre reinforced)
- Working temperature: max 130°C

Advantages

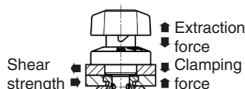
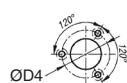
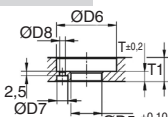
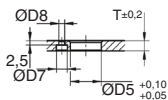
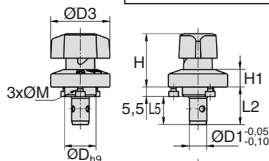
- Allows to change and lock quickly without tools and without screws in 1/4 turn.
- On/Off display of the lock.
- Saves time by avoiding the handling of tools.

Infos

- Screws M2 or M3 are supplied
- The specified forces apply only for use with the **GAR-DLL** sleeves.

Accessories

- Mounting sleeve **GAR-DLL**



Mounting form A:
for 6mm to 12 mm plates

Mounting form B:
for plates up to 20mm

DISCOUNTS

Qty	1+	4+	8+
Disc. Price	-5%	-5%	On request

Part number	ØD	ØD1	ØD2	ØD3	ØD4	H	H1	L2	L5	ØM
GAR6-14/QT	14	6	25	25	21	24.5	6.5	19.5	14	M2x3
GAR10-16/QT	18	10	34	34	28	31	10	21.5	16	M3x4
GAR10-22/QT	18	10	34	34	28	31	10	27.5	22	M3x4

Part number	ØD5	ØD6	ØD7	ØD8	T	T1	Clamping force (N)	Shear strength (kN)	Extraction force (kN)	Price per unit 1 to 3
GAR6-14/QT	14	26	4.4	2.4	6	6-10	30	3	0.5	54,51 €
GAR10-16/QT	18	35	6.5	3.4	6	6-14	50	9	1.5	57,27 €
GAR10-22/QT	18	35	6.5	3.4	12	12-20	50	9	1.5	57,27 €

Dimensions in mm

Our other products



KB_WW
Closed linear precision bearing, Economy range



SBF
Sealed flange bearing unit for Food Industry, cover



BEF
Bearing housing for miniature ballscrew, Bearing housing



VMS
Stainless steel knurled thumb screw, Knurled



BPHT
Ball transfer unit bolt fitting, Heavy



ZB
Shaft for linear guides, Hardened ground stainless steel



MDR
Dee shackle with eye bolt, Steel



BABpss
301 Stainless steel ball pin, Stainless steel



ZDB
Machined plastic bevel gear, 2:1



INO
Internal gear, Steel 20NCD2



PPD
Indexing plunger for sheets, For sheet



SHA
Handwheel without handle, Polyamide

Complementary products



GARDLL
Mounting sleeve for lock pin, Nickel-plated steel or Stainless steel