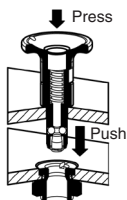


Lock pin for clamping

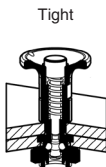
GAR

Introduction

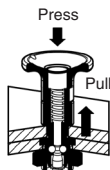
The **locking pins** are ergonomic items designed for the quick clamping of 2 plates. The system can be used for tool changing devices in the assembly area or for other manual movements, such as conversion to automatic installations. The **GAR-BAB** are lock pins based on the principle of a ball lock pin, offering excellent grip and easy handling. The **GAR-QT** are based on a quarter turn lock, with an On/Off indication. Although the model **GAR-DLL** can be used without the mounting sleeves, they still allow optimum use of the lock pins.



Button pressed, insert the locking pin into the fixing sleeve

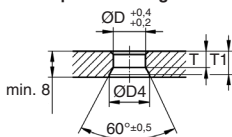


Release the button to clamp the plates



To remove, button pressed, pull the locking pin out of the fixing sleeve.

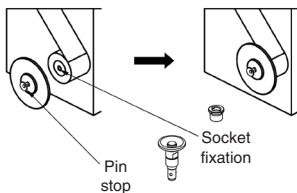
Use without fixing sleeve Counterpart mounting dimensions



For locking pins

| ØD= | ØD | min. ØD4 | T | T1 |
|-----|----|----------|-----|------|
| 6 | 6 | 12,5 | 4,9 | ~6,6 |
| 10 | 10 | 8 | 5 | ~7,2 |

Example of use
Quick mounting and removal of folded edge plates for paper rolls..



Lock pin for clamping

GARBAB

Ball lock pin type

- **Ball lock pins for clamping**
- Locking element
- Materials :
 - Body and button, nickel-plated steel .
 - Spring, balls and retaining ring in stainless steel
 - O-ring FKM
- Working temperature: max 180°C

Advantages

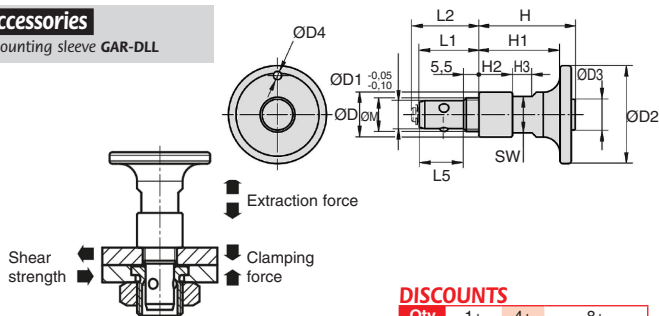
- Allows tool-free locking or unlocking and without screws by simple pressing.
- Saves time by avoiding the handling of tools.

Infos

- The specified forces apply only for use with the **GAR-DLL** sleeves.

Accessories

- Mounting sleeve **GAR-DLL**



DISCOUNTS

| Qty | 1+ | 4+ | 8+ |
|-------|-------|-----|------------|
| Disc. | Price | -5% | On request |

| Part number | ØD | ØD1 | ØD2 | ØD3 | ØD4 | ØM | L1 | L2 | L5 | H | H1 |
|--------------|----|-----|-----|-----|-----|---------|--------------------|---------------------|-----------------------|-----------------------|----|
| GAR6-10/BAB | 12 | 6 | 25 | 8 | - | M8 | 19.0 | 21 | 13.5 | 22.2 | 18 |
| GAR10-16/BAB | 16 | 10 | 35 | 11 | 3 | M12x1.5 | 21.5 | 23.5 | 16.0 | 34.4 | 29 |
| Part number | H2 | H3 | SW | ØD5 | ØD6 | Tmax | Clamping force (N) | Shear strength (kN) | Extraction force (kN) | Price per unit 1 to 3 | |
| GAR6-10/BAB | 6 | 5.5 | 10 | 80 | 13 | 10 | 30 | 3 | 0.5 | 47,70 € | |
| GAR10-16/BAB | 12 | 7.0 | 13 | 12 | 17 | 16 | 50 | 9 | 1.5 | 49,06 € | |

Dimensions in mm

HPC

WEB
04/2021

www.hpceurope.com

Tél: 0 825 88 5000 Service 0,15€/min + prix appel

Mounting sleeve for lock pin

Makes it easy to hold the lock pins **GARDLL**

- Sleeve for locking pin GAR
- Surface mounted or flush mounted in a counter-bored hole
- Materials:
 - Nickel-plated steel
 - Stainless steel

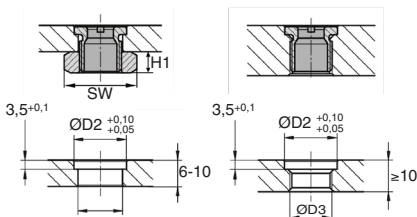


Advantages

- Allows optimum retention of the locking pins GAR.

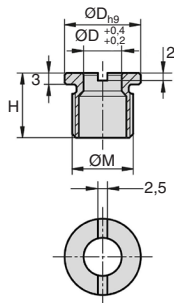
Accessories

- Quarter-turn lock pins GAR-QT and the lock pins GAR-BAB



Mounting form A
for plates with a 10 mm
thickness

Mounting form B
for plates thicker than
10mm or in a blind hole



DISCOUNTS

| | | | |
|-------|-------|-----|------------|
| Qty | 1+ | 4+ | 8+ |
| Disc. | Price | -5% | On request |

| Part number | ØD | ØD1 | ØM | H | ØD2 | ØD3 | H1 | SW | Price per unit 1 to 3 |
|------------------------|----------------------------------|-----|---------|----|-----|-----|----|----|-----------------------|
| Steel | | | | | | | | | |
| GAR6-DLL | 6 | 16 | M12x1.5 | 15 | 16 | 13 | - | - | 7,51 € |
| GAR10-DLL | 10 | 20 | M16x1.5 | 17 | 20 | 17 | - | - | 8,17 € |
| DLL-M12-EC | Nut for GAR6-DLL | | | | | | 6 | 19 | 0,51 € |
| DLL-M16-EC | Nut for GAR10-DLL | | | | | | 8 | 24 | 0,69 € |
| Stainless steel | | | | | | | | | |
| GAR6-DLL/SS | 6 | 16 | M12x1.5 | 15 | 16 | 13 | - | - | 10,88 € |
| GAR10-DLL/SS | 10 | 20 | M16x1.5 | 17 | 20 | 17 | - | - | 13,63 € |
| DLL-M12-EC/SS | Nut for GAR6-DLL/SS | | | | | | 6 | 19 | 0,57 € |
| DLL-M16-EC/SS | Nut for GAR10-DLL/SS | | | | | | 8 | 24 | 0,99 € |
| Assembly tools | | | | | | | | | |
| DLL-M16-TOOL | Tools for GAR6-DLL and GAR10-DLL | | | | | | | | 20,81 € |

Dimensions in mm

Lock pin for clamping

GARQT

Quarter turn type

- Quarter turn pin for clamping

- Locking element
- Materials :
 - Nickel-plated steel body.
 - Spring and balls in stainless steel
 - Button in black PA polyamide (glass-fibre reinforced)
- Working temperature: max 130°C

Advantages

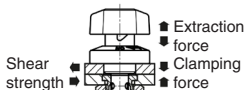
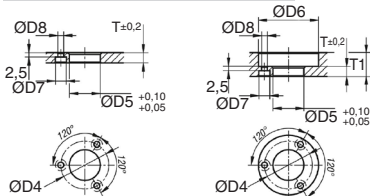
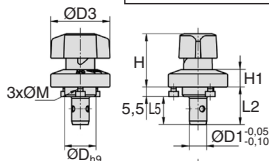
- Allows to change and lock quickly without tools and without screws in 1/4 turn.
- On/Off display of the lock.
- Saves time by avoiding the handling of tools.

Infos

- Screws M2 or M3 are supplied
- The specified forces apply only for use with the GAR-DLL sleeves.

Accessories

- Mounting sleeve GAR-DLL



Mounting form A:
for 6mm to 12 mm plates

Mounting form B:
for plates up to 20mm

DISCOUNTS

| Qty | 1+ | 4+ | 8+ |
|-------|-------|-----|------------|
| Disc. | Price | -5% | On request |

| Part number | ØD | ØD1 | ØD2 | ØD3 | ØD4 | H | H1 | L2 | L5 | ØM |
|-------------|----|-----|-----|-----|-----|------|-----|------|----|------|
| GAR6-14/QT | 14 | 6 | 25 | 25 | 21 | 24.5 | 6.5 | 19.5 | 14 | M2x3 |
| GAR10-16/QT | 18 | 10 | 34 | 34 | 28 | 31 | 10 | 21.5 | 16 | M3x4 |
| GAR10-22/QT | 18 | 10 | 34 | 34 | 28 | 31 | 10 | 27.5 | 22 | M3x4 |

| Part number | ØD5 | ØD6 | ØD7 | ØD8 | T | T1 | Clamping force (N) | Shear strength (kN) | Extraction force (kN) | Price per unit 1 to 3 |
|-------------|-----|-----|-----|-----|----|-------|--------------------|---------------------|-----------------------|-----------------------|
| GAR6-14/QT | 14 | 26 | 4.4 | 2.4 | 6 | 6-10 | 30 | 3 | 0.5 | 54,51 € |
| GAR10-16/QT | 18 | 35 | 6.5 | 3.4 | 6 | 6-14 | 50 | 9 | 1.5 | 57,27 € |
| GAR10-22/QT | 18 | 35 | 6.5 | 3.4 | 12 | 12-20 | 50 | 9 | 1.5 | 57,27 € |

Dimensions in mm

Our other products



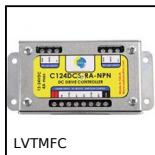
PTCR

Adjustable furniture foot, square tube



RFVcap

Stainless steel protective cover, Open protective cover



LVTMFC

Device for controlling limit switches, For mini-actuator LVT



PT880

Drive sprocket for slat top chain, Range 880



BEK

Bearing housing for miniature ballscrew, Bearing housing



PW_PWG3

Worm - precision range, Steel



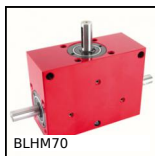
PRF_P

Anchor foot for 45x45 profile, Anchor foot



VAB

Flanged nut for ball screw, For VAB ballscrew



BLHM70

Right angled gearbox, up to 128 Nm



RFK48B

Hypoid gearbox - Stainless steel, up to 350 Nm



NSR

Adjustable clamp, Adjustable



BOX-SHNA

Hexagonal nut - DIN934, Box set of steel nuts

Complementary products



GARQT

Quarter turn lock pin for clamping, Quarter turn



GARBAB

Lock pin for clamping, Ball lock pin