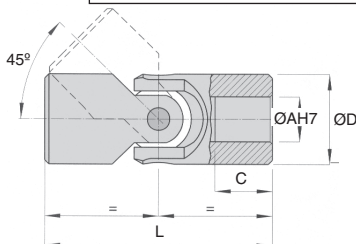
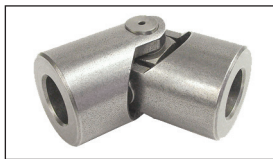


G Industrial range

- Standard series in accordance with DIN 808-7551
- Smooth hardened bushes
- Suitable for speeds up to 800 rpm
- Max. misalignment angle 45°
- Materials:
 - Body: C45 steel
 - Pin: Hardened steel 18NCD4



Accessories

- Optional rubber cover

Modifiable bore



Angle	Factor
5°	1,25
10°	1,00
20°	0,75
30°	0,45
40°	0,30

Effect of operating angle

The torques below are given for a 10° angle. For other angles, the appropriate factor from this table should be applied.

E.g. For 100Nm to be transmitted at 20°, the corrected value of torque becomes $100/0.75 = 133$ Nm and a joint should be chosen that can transmit 133Nm at the required speed.

DISCOUNTS

Qty	1+	2+	4+	10+
Disc.	List -6%	-12%	On request	

Part number	ØD	ØA	C	L	Torque (Nm)						Stock*	Price each	
					at 100 rpm	at 200 rpm	at 300 rpm	at 400 rpm	at 500 rpm	at 700 rpm			at 800 rpm
G01-A-6/6	16	6	9	34	-	-	-	-	-	-	-	✓	28,95 €
G02-A-8/8	16	8	11	40	-	-	-	-	-	-	-	✓	28,95 €
G03-A-10/10	20	10	10	45	32,5	22,1	18,8	16,9	15,6	14,3	9,7	✓	30,10 €
G04-A-12/12	25	12	11	50	55,9	32,5	26,6	22,1	20,1	16,9	15,6	✓	32,85 €
G05-A-14/14	29	14	13	56	89,1	55,9	51,3	46,8	43,5	37,1	34,4	✓	34,91 €
G1-A-16/16	32	16	15	65	112,4	109,2	93,6	74,7	66,9	53,3	46,8	✓	36,08 €
G2-A-18/18	37	18	17	72	202,8	156,0	124,8	93,6	78,0	62,4	-	✓	41,89 €
G3-A-20/20	40	20	19	82	312,0	218,4	156,0	124,8	109,2	78,0	-	✓	49,52 €
G4-A-22/22	47	22	22	95	390,0	249,6	187,2	156,0	124,8	93,6	-	✓	59,43 €
G5-A-25/25	50	25	26	108	499,2	312,0	218,4	187,2	156,0	124,8	-	✓	70,06 €
G6-A-30/30	58	30	30	122	561,6	343,2	249,6	202,8	171,6	-	-	✓	89,69 €
G61-A-32/32	63	32	30	130	561,6	343,2	249,6	202,8	171,6	-	-	-	On request
G7-A-35/35	70	35	35	140	592,8	390,0	296,4	226,2	187,2	-	-	-	On request
G8-A-40/40	80	40	42	160	655,2	436,8	343,2	280,8	-	-	-	-	On request
G9-A-50/50	95	50	54	190	936,0	624,0	436,8	343,2	-	-	-	-	On request

*Depending on availability - Dimensions in mm