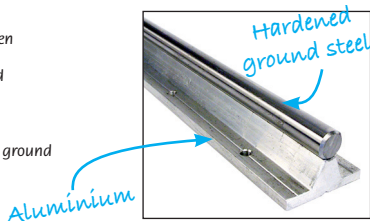


FTSN

Mounts without sagging or deformation

- **Comprises a shaft and its support**
- Normally used where the load is heavy when compared to the shaft length
- Shaft support has closely spaced pre-drilled mounting holes
- Material:
 - Support: Ground aluminium
 - Shaft: CK55 steel hardened (62HRC) and ground

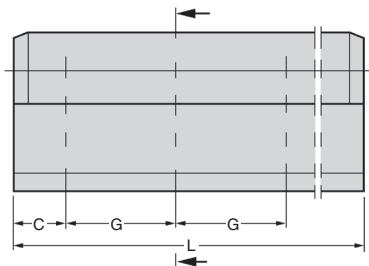
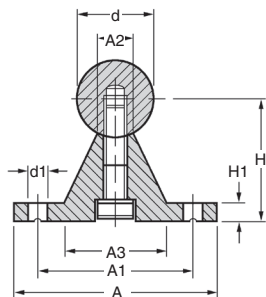


Options

- Other lengths possible (up to 6000mm)

Accessories

- **KB-OP** and **TK-OB** linear bearings



DISCOUNTS

Qty	1+	2+	4+
Disc.	List	-20%	On request

Part number	d	A	H	A1	A2	A3	H1	C	d1	G	Standard length (mm)	Stock*	Price each
FTSN-12G	12	40	22	29	5,4	15	5	37,5	4,5	75	1000	✓	296,69 €
FTSN-16G	16	45	26	33	7,0	19	5	50,0	5,5	100	1000	✓	228,23 €
FTSN-20G	20	52	32	37	8,1	23	6	50,0	6,6	100	1000	✓	262,46 €
FTSN-25G	25	57	36	42	10,3	26	6	60,0	6,6	120	1000	✓	279,56 €
FTSN-30G	30	69	42	51	11,0	29	7	75,0	9,0	150	1000	-	365,17 €
FTSN-40G	40	73	50	55	15,0	36	9	100,0	9,0	200	1000	-	456,51 €

*Depending on availability - Dimensions in mm

Our other products



GSI

Stainless steel gas spring, Stainless steel



BKGS

Backlash free coupling Gerwah®, from 1.2 to 450Nm



YG1

HEAVY DUTY spur gear, Steel 35NCD6



SHW

Plain washer, Steel



HG8-ECO

Eco range Spur gear, Steel C45



PARF80

Pressed steel base rigid foot, Swivelling - Ø80



F7-SF-SM

Multifunction display, Mounting bracket for front mounting



BABS303

303 Stainless steel compact ball pin, Stainless steel 303



CLLCLP

Clevis components, long version, Steel - long range



LRR-53

Spring loaded latch, Spring return latch - stainless steel



AT10-32ECO

AT type timing pulley, Economy range - AT10 aluminium



T5courroie

T type timing belt, T5 Steel cored polyurethane

Complementary products



KB_OP

Open precision linear bearing, Precision - steel



KB_OP

Open precision linear bearing, Precision - steel



TK_UUOP

Topball self-aligning linear bearing, Topball self-aligning



ZAmm

Shaft for linear guides, Hardened ground steel