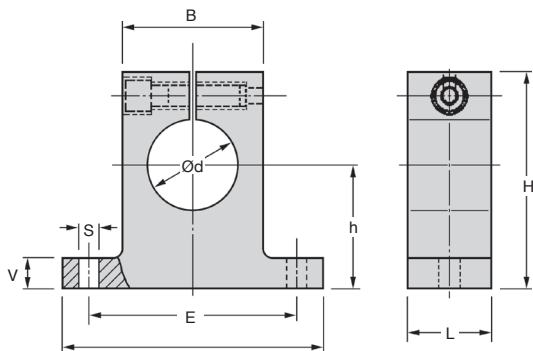
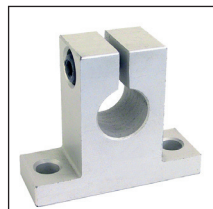


- End support for linear guide shaft
- Material: Aluminium
- Adjustable backlash
- Mounting holes conform to DIN912 8.8

Accessories

- Ground shafts Z-A, Z-B



DISCOUNTS

| | | | | |
|-------|------|-----|------|------------|
| Qty | 1+ | 5+ | 10+ | 25+ |
| Disc. | List | -6% | -12% | On request |

| Part number | Ød | h | B | H | L | A | S | V | E | Stock* | Price each 1 to 4 |
|-------------|----|----|----|-----|----|-----|------|------|-----|--------|----------------------|
| FGWA-12 | 12 | 20 | 20 | 35 | 12 | 42 | 5,5 | 5,5 | 32 | ✓ | 14,55 € |
| FGWA-16 | 16 | 25 | 26 | 42 | 15 | 50 | 5,5 | 6,5 | 40 | ✓ | 16,19 € |
| FGWA-20 | 20 | 30 | 32 | 50 | 20 | 60 | 5,5 | 8,0 | 45 | ✓ | 20,23 € |
| FGWA-25 | 25 | 35 | 38 | 58 | 25 | 74 | 6,6 | 9,0 | 60 | ✓ | 23,06 € |
| FGWA-30 | 30 | 40 | 45 | 68 | 30 | 84 | 9,0 | 10,0 | 68 | ✓ | 35,65 € |
| FGWA-40 | 40 | 50 | 56 | 86 | 30 | 108 | 11,0 | 12,0 | 86 | ✓ | 68,12 € |
| FGWA-50 | 50 | 60 | 80 | 100 | 40 | 130 | 11,0 | 14,0 | 108 | - | 105,41 € |

*Depending on availability - Dimensions in mm

Our other products



MFB_MHB
Moulded plastic bevel gear (nylon), 1.5:1



G01
Single universal joint, Normal duty



FBL4004_K7
Brush strip per meter PA6 fibres Ø0.3 to Ø0.5, Black polyamide 6-...



M0
Worm and wheel set, Machined plastic (delrin)



CHMBR
Reaction arm, CHM and CHMR gear reducers reaction arm



GG3
Ground spur gear, Heat treated steel



PTAf100-PAMF100
Articulated fixable foot with pressed base Ø100, Ø 100



DZY
Cylindrical stop, Steel



SVT15
Screwjack with travelling screw, with translating screw



CLR
Straight clevis, Straight clevis for use with a male clevis



BABam
Self-locking ball pin lifting ring for threaded hole, Self-latching



HTD8M_20
HTD Heavy duty timing pulley, HTD8 Cast

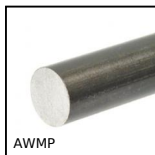
Complementary products



ZA
Shaft for linear guides, Hardened ground steel



ZB
Shaft for linear guides, Hardened ground stainless steel



AWMP
Aluminium shaft for linear guide, Aluminium