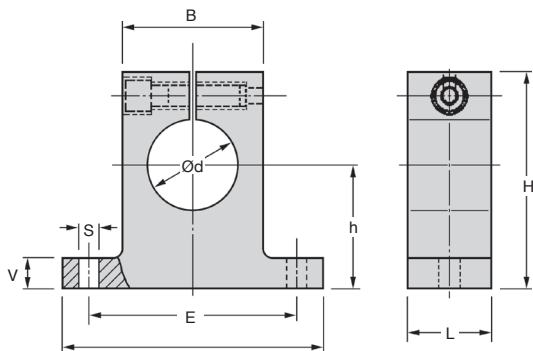
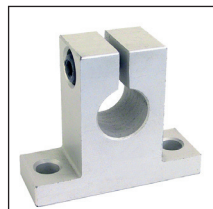


- End support for linear guide shaft
- Material: Aluminium
- Adjustable backlash
- Mounting holes conform to DIN912 8.8

Accessories

- Ground shafts Z-A, Z-B



DISCOUNTS

| | | | | |
|-------|------|-----|------|------------|
| Qty | 1+ | 5+ | 10+ | 25+ |
| Disc. | List | -6% | -12% | On request |

| Part number | Ød | h | B | H | L | A | S | V | E | Stock* | Price each 1 to 4 |
|-------------|----|----|----|-----|----|-----|------|------|-----|--------|----------------------|
| FGWA-12 | 12 | 20 | 20 | 35 | 12 | 42 | 5,5 | 5,5 | 32 | ✓ | 14,55 € |
| FGWA-16 | 16 | 25 | 26 | 42 | 15 | 50 | 5,5 | 6,5 | 40 | ✓ | 16,19 € |
| FGWA-20 | 20 | 30 | 32 | 50 | 20 | 60 | 5,5 | 8,0 | 45 | ✓ | 20,23 € |
| FGWA-25 | 25 | 35 | 38 | 58 | 25 | 74 | 6,6 | 9,0 | 60 | ✓ | 23,06 € |
| FGWA-30 | 30 | 40 | 45 | 68 | 30 | 84 | 9,0 | 10,0 | 68 | ✓ | 35,65 € |
| FGWA-40 | 40 | 50 | 56 | 86 | 30 | 108 | 11,0 | 12,0 | 86 | ✓ | 68,12 € |
| FGWA-50 | 50 | 60 | 80 | 100 | 40 | 130 | 11,0 | 14,0 | 108 | - | 105,41 € |

*Depending on availability - Dimensions in mm

Our other products



PRF_PIV

Internal hinge pin for aluminium profile, Internal hinge pin



DGSA

Male rod ends , Steel / steel - Economy range



HCA

Magnetic screw with socket, Steel



F7-I

Multifunction display, With internal sensor



AT5-BAR

AT type tooth bar stock, AT5



EMS

Stainless steel knurled thumb nut, Knurled



HD

Double needle roller universal joint, Heavy duty



T5M T10M

T type timing belt per metre, T5 Steel cored polyurethane



DPAR_DKON

Progressive stop, Steel



SERB

Cam latch, Cam latch



DCG

Suction cup, 2.5 bellows, nitrile



UCP_PBT

Stainless/Polymer pillow block bearing, Polymer and stainless steel

Complementary products



ZA

Shaft for linear guides, Hardened ground steel



ZB

Shaft for linear guides, Hardened ground stainless steel



AWMP

Aluminium shaft for linear guide, Aluminium