

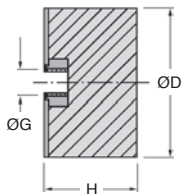
- Large degree of deformation accepted thus absorbing large amounts of energy
- Energy absorbed gradually
- Material:
 - Core: Steel plates
 - Cylinder: Rubber
- Hardness NK 55-60 shore A
- Working temp: -40°C to +70°C

Uses

- Shock absorbing stop

Info.

- Not sold individually, please contact us for details
- Values for loads and rigidity are given as a guide only



DISCOUNTS

Qty	1+	6+	20+	40+	100+	200+
Disc.	List	-10%	-15%	-20%	-25%	On request

Part number	ØG	ØD	H	Compression		Stock*	Price each 1 to 5
				stiffness (N/mm)	Max. load (N)		
E-ZY4-10-10	M4	10	10	38	43	✓	1,16 €
E-ZY4-10-15	M4	10	15	-	-	✓	1,42 €
E-ZY4-15-15	M4	15	15	74	95	✓	1,49 €
E-ZY6-20-15	M6	20	15	138	170	✓	1,97 €
E-ZY6-20-20	M6	20	20	-	-	✓	2,04 €
E-ZY6-25-10	M6	25	10	-	-	✓	2,20 €
E-ZY6-25-20	M6	25	20	128	280	✓	2,82 €
E-ZY6-25-30	M6	25	30	80	280	✓	2,82 €
E-ZY8-30-15	M8	30	15	-	-	✓	2,73 €
E-ZY8-30-17	M8	30	17	-	-	✓	2,82 €
E-ZY8-30-20	M8	30	20	200	400	✓	3,17 €
E-ZY8-30-30	M8	30	30	120	400	✓	3,87 €
E-ZY8-40-30	M8	40	30	23	234	✓	4,76 €
E-ZY10-50-20	M10	50	20	680	1000	✓	6,03 €
E-ZY10-50-30	M10	50	30	425	1000	✓	6,58 €
E-ZY10-50-40	M10	50	40	-	-	✓	7,23 €
E-ZY10-50-50	M10	50	50	-	-	✓	8,45 €
E-ZY12-75-25	M12	75	25	2000	2300	✓	12,82 €
E-ZY12-75-55	M12	75	55	-	-	✓	19,07 €

*Depending on availability - Dimensions in mm

Our other products



WING
Manually tightened wing nut, Stainless steel DIN 314/315



NSKB
Drylin® Rail end cap, Rail end cap



SSB
Stainless steel bevel gear, 1:1



VCMB
Dual-thread screw wood/metal, Stainless steel



FF15
Offset spur gear reducer, from 2.20 to 10 Nm



PRF19_E
Bracket for aluminium profile, PRF19 to PRF45



NT62
Spur gear coaxial gearbox, from 6 to 18 Nm - Inline



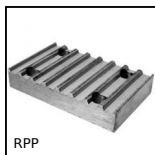
GE
Toggle latches, Standard



BABreglable
Adjustable ball pin hardened stainless



CM_CO
Tools Hygienic Usit® and Hygienic



RPP
Connecting plate for RPP type timing belts,

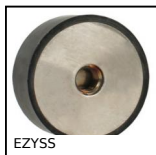


CHAu
Screwed hinge, 270°

Complementary products



DZY
Cylindrical stop, Steel



EZYSS
Stainless steel cylindrical stop, stainless steel



AZY
Cylindrical elasto mount, Steel



BZY_SS
Stainless steel cylindrical elasto mount, Stainless steel