

Modular handle for aluminium profiles

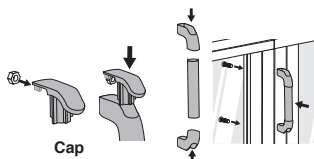
ETP

Ends and tubes for creating custom handles

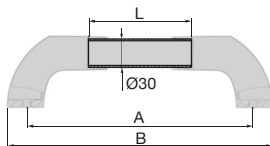
- **Interchangeable ends**
- Ends and caps sold in pairs
- **Material:**
Ends : Black glass fibre reinforced nylon
Tubes : Carbon fibre, aluminium or stainless steel

Advantages

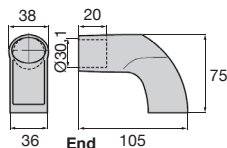
- Modular system allows assembly of tailor made handles



Assembly using square tube TUBE



Assembly using PRF profiles



DISCOUNTS

Qty	1+	50+	100+
Disc.	List -5%	On request	

Références	For screw	A	L	B	Weight (g)	Prix Uni. 1 à 49
End						
ETP-B	M8	-	-	-	69,8	7,71 €
End cap						
ETP-B-CAP	-	-	-	-	52	3,45 €
Anodised aluminium tube						
ETP-200/AA	-	200	70	240,8	17	6,51 €
ETP-300/AA	-	300	170	340,8	42	9,79 €
ETP-400/AA	-	400	270	440,8	67	13,06 €
ETP-500/AA	-	500	370	540,8	91	16,35 €
Stainless steel tube						
ETP-200/SS	-	200	70	240,8	51	16,35 €
ETP-300/SS	-	300	170	340,8	124	24,52 €
ETP-400/SS	-	400	270	440,8	197	31,06 €
ETP-500/SS	-	500	370	540,8	270	39,25 €

Dimensions in mm

Our other products



ASL
45° Hoist ring for welding, for 45° lifts - for welding



HTD5M_25
HTD Heavy duty timing pulley, HTD5 Aluminium



H0
Crossed helical gear crossed axis at 90°, Steel 20NCD2



HTD3M_09
HTD Heavy duty timing pulley, HTD3 Aluminium



GGP
Male wing knob, Technopolymer with stainless steel spindle



PARF80
Pressed steel base rigid foot, Swivelling - Ø80



HTD5M_15
HTD Heavy duty timing pulley, HTD5 Steel



BOX-INS-W
Box set of self tapping inserts, Boxed set - For wood



CHINV
Invisible hinge, Invisible - 90° opening



NANO
Speed controller 3A, 3 A



CHAsb63
Hinge without pin, Polymer pin hinge



SC2
2 part rigid shaft clamp, Clamping jaw

Complementary products



PRF4545
Standard aluminium profile, 45 x 45 mm



PRF_ECL
Nut for aluminium profile, Steel square nut with tab