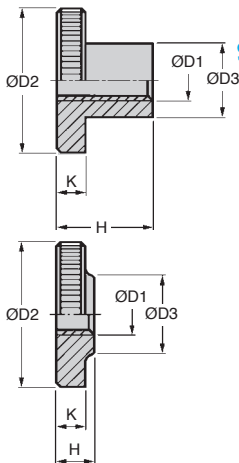


Threads M3-M12

EMSH
EMS_B

- Solid knurled nut
- Material: stainless steel 18.9
- Conforms to DIN 466



Tall version EMS-H



Low version EMS-B

DISCOUNTS

Qty	1+	6+	20+	40+	60+	101+
Disc.	List	-10%	-15%	-20%	-25%	On request

Part number	ØD1	ØD2	ØD3	H	K	Stock*	Price each 1 to 5
High version							
EMS-3H	M3	12	6	7,5	2,5	✓	1,08 €
EMS-4H	M4	16	8	9,5	3,5	✓	1,64 €
EMS-5H	M5	20	10	11,5	4,0	✓	1,91 €
EMS-6H	M6	24	12	15,0	5,0	✓	2,99 €
EMS-8H	M8	30	16	18,0	6,0	✓	6,56 €
EMS-10H	M10	36	20	23,0	8,0	✓	10,67 €
EMS-12H	M12	36	20	23,0	8,0	✓	18,05 €
Low version							
EMS-4B	M4	16	8	4,0	3,5	✓	1,26 €
EMS-5B	M5	20	10	5,0	4,0	✓	1,68 €
EMS-6B	M6	24	12	6,0	5,0	✓	2,65 €
EMS-8B	M8	30	16	8,0	6,0	✓	6,44 €
EMS-10B	M10	36	20	10,0	8,0	✓	11,59 €
EMS-12B	M12	36	20	10,0	8,0	✓	15,25 €

*Depending on availability - Dimensions in mm

Our other products



BABPass

Hardened stainless steel ball pin with ring, With grip ring



DILC

Indexing plunger with cam, with cam



ACLBTs

Closing system for aluminium profile, 90° bracket for spherical end...



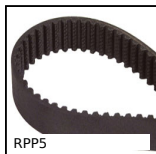
PRF_PIV

Internal hinge pin for aluminium profile, Internal hinge pin



DCA

Suction cup, 1.5 bellows, natural rubber



RPP5

RPP heavy duty timing belt, RPP5



FBL6000_K19

Brush strip per meter horsehair fibres Ø0.2, Black horsehair



STU

Stroke rotary bushing, Steel



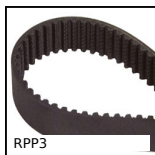
CHINV2

Invisible hinge, Invisible - Opening up



GE32

Sprung toggle latch with connecting link,



RPP3

RPP heavy duty timing belt, RPP3



G-ECO

Eco range Spur gear, Steel C45

Complementary products