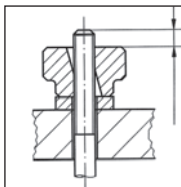
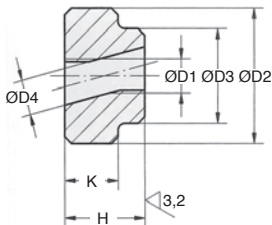


- For use in applications that do not require very tight fastening
- Material: hardened steel
- Finish: hardened and blackened



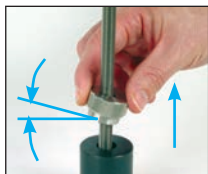
Threaded rod should be longer than dimension "H"



1) Tilt, and slide down.



2) Level and tighten or loosen.



3) Tilt, and slide back up.

DISCOUNTS

Qty	1+	6+	20+	40+	60+	101+
Disc.	List	-10%	-15%	-20%	-25%	On request

Part number	ØD1	ØD2	ØD3	ØD4	H	K	Weight (g)	Stock*	Price each 1 to 5
								✓	
EMR-5	M5	20	14	5,2	12	8	25	✓	7,63 €
EMR-6	M6	24	16	6,2	14	10	38	✓	8,86 €
EMR-8	M8	30	20	8,2	17	12	75	✓	11,46 €
EMR-10	M10	36	28	10,3	20	14	130	✓	12,59 €
EMR-12	M12	40	32	12,3	24	16	185	✓	15,80 €

*Depending on availability - Dimensions in mm

Our other products



Y52
Spur gear coaxial gearbox, from 0.27 to 0.90 Nm - In-line



PRF_JL5
Lip seal for panel, Door seal - Ø 5mm



BLHT60
Right angled gearbox, from 26 to 70 Nm



NCT
Square tube connector, Fixed angle



GARQT
Quarter turn lock pin for clamping, Quarter turn



PW_PWG2
Worm - precision range, Steel



PRF_CH
Cable-carrier chain for aluminium profile, Supplied in metre lengths



CABPVC
PVC covered galvanised steel cable, Galvanised steel with



YG4
HEAVY DUTY spur gear, Steel 35NCD6



PSG15
Spur gear - precision range, Stainless steel 316



PW_PWG3
Worm - precision range, Stainless steel



VELprf
Clip-on base for hook-and-loop strip, Polyamide

Complementary products



EMS
Stainless steel knurled thumb nut, Knurled