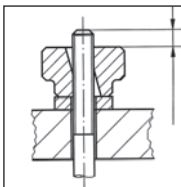
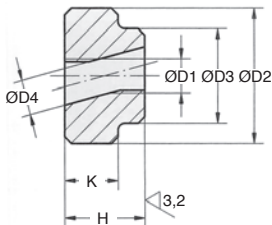


- For use in applications that do not require very tight fastening
- Material: hardened steel
- Finish: hardened and blackened



Threaded rod should be longer than dimension "H"



1) Tilt, and slide down.



2) Level and tighten or loosen.



3) Tilt, and slide back up.

DISCOUNTS

Qty	1+	6+	20+	40+	60+	101+
Disc.	List	-10%	-15%	-20%	-25%	On request

Part number	ØD1	ØD2	ØD3	ØD4	H	K	Weight (g)	Stock*	Price each 1 to 5
								✓	
EMR-5	M5	20	14	5,2	12	8	25	✓	7,63 €
EMR-6	M6	24	16	6,2	14	10	38	✓	8,86 €
EMR-8	M8	30	20	8,2	17	12	75	✓	11,46 €
EMR-10	M10	36	28	10,3	20	14	130	✓	12,59 €
EMR-12	M12	40	32	12,3	24	16	185	✓	15,80 €

*Depending on availability - Dimensions in mm

Our other products



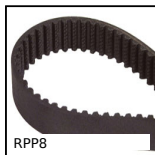
PRES2HR

Manual workbench press, Force up to 200kg



GPB55

Threaded spherical knob, Aluminium



RPP8

RPP heavy duty timing belt, RPP8



PR880

Idler sprocket for slat top chain, Range 880



PRF_SDD_1820

Support for Ø18 or Ø20mm Prox detector, Ø18 and Ø20



RBGtc

Swivel castor with central hole, Steel - grey rubber



KH

Linear bearing, Light



DOMI80

Accessories, Plate



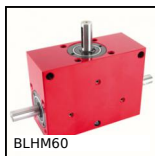
CMAss

Eye bolt stainless steel, Stainless steel



BPHT

Ball transfer unit bolt fitting, Heavy



BLHM60

Right angled gearbox, double output shafts,



CTZY

Diabolo shaped elasto mount, Steel

Complementary products



EMS

Stainless steel knurled thumb nut, Knurled