

Antistatic knurled nut

EMAS Prevents occurrence of electrostatic spark

Eliminates electrical charges

- Materials :

Reinforced PA thermoplastic, graphite black
Tapped bush in steel trivalent blue passivated

Advantages

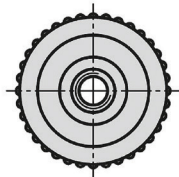
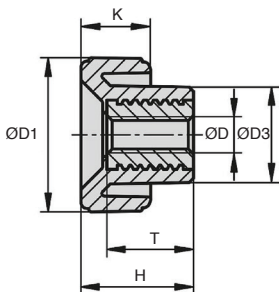
- These products can be used for electrostatic discharge applications or areas where electrostatic discharge protection (EPA) in accordance with DIN EN61340-5-1
- The knurled nuts can be tightened or loosened without tools



NEW!



Antistatic



DISCOUNTS

| Qty | 1+ | 10+ | 20+ | 50+ | 100+ | 200+ |
|-------|------|-----|------|------|------|------------|
| Disc. | List | -5% | -10% | -15% | -20% | On request |

| Part number | ØD | ØD1 | ØD3 | H | K | T | Price each |
|-------------|-----|-----|------|----|----|----|------------|
| | | | | | | | 1 to 9 |
| EMAS18-M4 | M4 | 18 | 11 | 13 | 8 | 10 | 6,12 € |
| EMAS20-M5 | M5 | 20 | 13,6 | 15 | 9 | 10 | 6,61 € |
| EMAS25-M6 | M6 | 25 | 14 | 17 | 10 | 10 | 7,24 € |
| EMAS32-M8 | M8 | 32 | 18 | 22 | 13 | 14 | 8,30 € |
| EMAS40-M10 | M10 | 40 | 19 | 25 | 14 | 14 | 9,03 € |

Dimensions in mm

Our other products



NTM

Nylon tipped set screw, Nylon-point



UCP_PBT

Stainless/Polymer pillow block bearing, Polymer and stainless steel



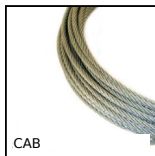
G2

Steel spur gear, Steel 20NCD2



ABL100005

Antistatic brush, Standard



CAB

Stainless steel cable, Stainless steel



BDP2R

Adjustable support arm, Increased grip



MCL

Cylindrical threaded sleeve, Cylindrical - steel



EHD06

Internal epicyclic servo reducers, from 8 to 19 Nm



CNA-CNG

Right angled mounting plate, Right



DOG319

Motor-gearbox 12V and 24V DC, from 4 to 20 Nm



PF30NM

Worm and wheel gear reducer, up to 8.8 Nm



PM4

Worm and wheel set, Hardened steel

Complementary products



BEAS

Star shaped anti-static handle, Star, anti-static



PAS

Pull handle, Reinforced PA thermoplastic



BEAS

Knob star grip antistatic, Star, anti-static