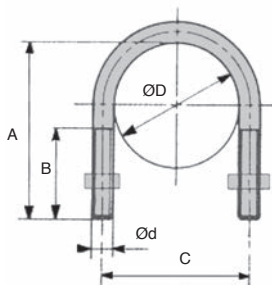
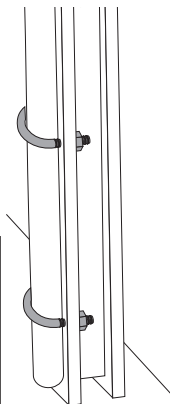
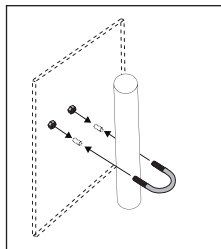


- Drawn steel wire, tolerance h9, overall tolerance 10
- 2 hexagonal nuts
- Material:  
Stainless steel 304

Stainless steel



### DISCOUNTS

Qty	1+	101+	201+	301+	401+
Disc. Prix	-5%	-10%	-15%	On request	

Part number	For tubr		Filet Ød	A (mm)	B (mm)	C (mm)	Stock*	Price each 1 to 100
	ØE external ØD	Ø internal d						
EIM013	13	1/4	M6	28	20	19	-	1,19 €
EIM017	17	3/8	M6	36	22	23	-	1,44 €
EIM021	21	1/2	M6	40	20	27	✓	1,51 €
EIM027	27	3/4	M8	50	30	35	✓	2,77 €
EIM034	34	1	M8	55	30	42	✓	3,03 €
EIM042	42	1 <sup>1/4</sup>	M8	68	35	50	✓	3,43 €
EIM049	49	1 <sup>1/2</sup>	M8	70	35	57	✓	3,55 €
EIM060	60	2	M8	80	35	68	✓	3,68 €
EIM076	76	2 <sup>1/2</sup>	M8	110	45	84	-	4,43 €
EIM089	89	3	M10	115	45	99	-	7,96 €
EIM114	114	4	M10	156	55	124	-	8,98 €

\*Depending on availability - Dimensions in mm

## Our other products



APBC  
Sensor support,  
Round rod



AF  
Rigid coupling, Set  
screw



CHMR40  
Worm and wheel  
gearbox, up to 57 Nm



PSG05DL  
Spur gear - precision  
range, Delrin



PSPT  
Flexible tube handle,  
PVC



CHAL  
Piano hinge,  
Aluminium



T10\_21N1F  
Synchronous pulley,  
Economy range - T10  
moulded plastic  
(nylon)



PTGT  
Tensioner pulley, For  
V belts



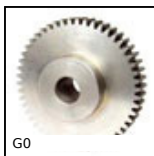
CHM63  
Worm and wheel  
gearbox, up to 196  
Nm



FB  
Bevel gear - Steel  
60C40, 4:1



RFK38B  
Hypoid gearbox -  
Stainless steel, up to  
200 Nm



G0  
Spur gear, Steel  
20NCD2

## Complementary products



EBM  
U bolt, Steel