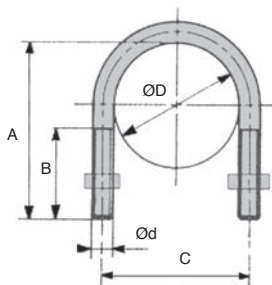
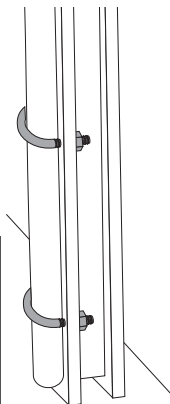
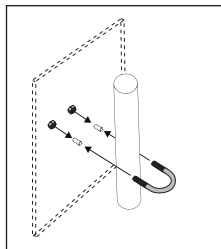


- Drawn steel wire, tolerance h9, overall tolerance 10
- 2 hexagonal nuts
- Material:
Stainless steel 304

Stainless steel



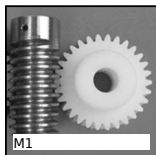
DISCOUNTS

Qty	1+	101+	201+	301+	401+
Disc. Prix	-5%	-10%	-15%	On request	

Part number	For tubr		Filet Ød	A (mm)	B (mm)	C (mm)	Stock*	Price each 1 to 100
	ØE external ØD	Ø internal d						
EIM013	13	1/4	M6	28	20	19	-	1,19 €
EIM017	17	3/8	M6	36	22	23	-	1,44 €
EIM021	21	1/2	M6	40	20	27	✓	1,51 €
EIM027	27	3/4	M8	50	30	35	✓	2,77 €
EIM034	34	1	M8	55	30	42	✓	3,03 €
EIM042	42	1 ^{1/4}	M8	68	35	50	✓	3,43 €
EIM049	49	1 ^{1/2}	M8	70	35	57	✓	3,55 €
EIM060	60	2	M8	80	35	68	✓	3,68 €
EIM076	76	2 ^{1/2}	M8	110	45	84	-	4,43 €
EIM089	89	3	M10	115	45	99	-	7,96 €
EIM114	114	4	M10	156	55	124	-	8,98 €

*Depending on availability - Dimensions in mm

Our other products



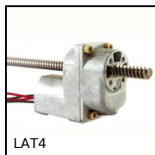
M1

Worm and wheel set,
Machined plastic
(delrin)



PW_PWG3

Wheel - precision
range, Bronze



LAT4

4A motorised linear
actuator, 4 amperes



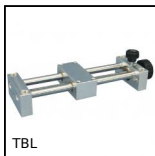
ACLERP

Roller block for
aluminium profile,
With guide rail



CHT

Asynchronous AC
motor , 0.09kW



TBL

Mini leadscrew table
with metric thread,
1kg



T5P_T10P

Connecting plate for T
type timing belts, T5



Q6

Deep groove ball
bearing, Steel



SH2

Parallel axis helical
gear, Steel 20NCD2



ACM_AZ

Mounting bracket for
bonnet fastener, Hook



HK

Manual locking clamp,
Manual locking clamp



GAC

Lock for latch clamp,
Strike plate

Complementary products



EBM

Steel U bolt, Steel