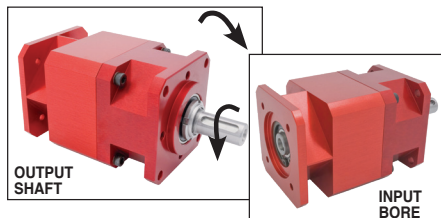


Internal epicyclic servo reducers **Size XS**

EHD04

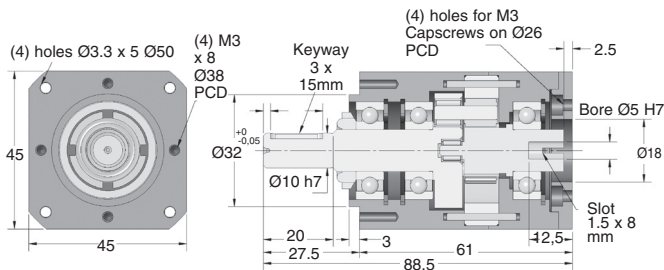
Torque up to 7Nm

- Ratios from 3:1 to 6:1
- Input is a slot pin drive
- Output backlash $\leq 15'$ (0,25°)
- Max. speed: 3,000 rpm
- Materials:
casing: anodised aluminium
input and output:
non-hardened steel
- Weight: 0.44kg



Options

- Can be modified to your specifications
- e.g. modified to suit your motor



OUTPUT TORQUE (In Nm, values given as a guide only)

Ratios	3:1	4:1	5:1	6:1	
3000	83	76	70	61	
2000	90	82	76	66	
1000	102	95	87	76	
SPEED (rpm)	500	120	110	102	89
200	135	126	116	101	
100	155	146	136	117	
50	210	196	180	158	

Large transmissible torque

DISCOUNTS

Qty	1+	2+	4+	6+
Disc. List	-15%	-20%		On request

Part number	Ratio	Max. input speed (rpm)	Max. output speed (rpm)	Efficiency at 1000 rpm	Direction of input/output rotation	Price each
EHD04-3	3:1	3000	1000	92%	Same	591,11 €
EHD04-4	4:1	3000	750	92%	Same	591,11 €
EHD04-5	5:1	3000	600	92%	Same	591,11 €
EHD04-6	6:1	3000	500	92%	Same	591,11 €

Dimensions in mm



Internal epicyclic servo reducers

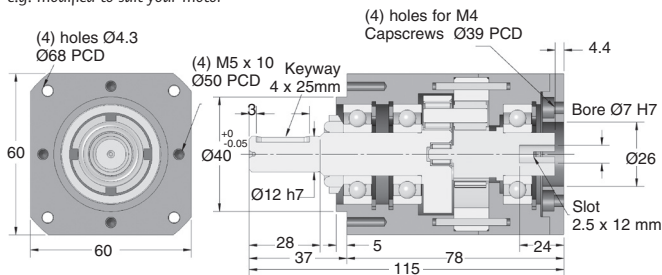
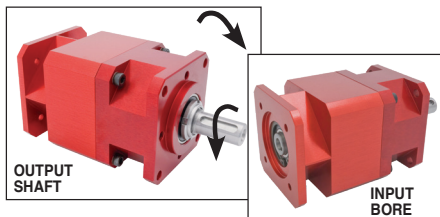
Torque up to 19Nm

EHD06

- Ratios from 3:1 to 6:1
- Input is a slot pin drive
- Output backlash $\leq 15'$ ($0,25^\circ$)
- Max. speed: 3,000 rpm
- Materials:
casing: anodised aluminium
gears: hardened steel
- Weight: 0.96kg

Options

- Can be modified to your specifications
- e.g. modified to suit your motor



Large transmissible torque

OUTPUT TORQUE (In Nm, values given as a guide only)

Ratios	3:1	4:1	5:1	6:1
3000	10	10	10	8
2000	12	12	12	10
1000	15	15	15	12
500	16	16	16	13
200	18	18	18	14
100	19	19	19	15
50	19	19	19	15

DISCOUNTS

Qty	1+	2+	4+	6+
Disc. List	-15%	-20%	-20%	On request

Part number	Ratio	Max. input speed (rpm)	Max. output speed (rpm)	Efficiency at 1000 rpm	Direction of input/output rotation	Price each
EHD06-3	3:1	3000	1000	92%	Same	658,62 €
EHD06-4	4:1	3000	750	92%	Same	658,62 €
EHD06-5	5:1	3000	600	92%	Same	658,62 €
EHD06-6	6:1	3000	500	92%	Same	658,62 €

Dimensions in mm

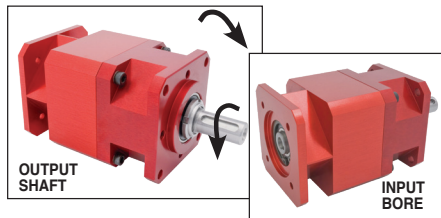
Internal epicyclic servo reducers



EHD08

Torque up to 50Nm

- Ratios from 3:1 to 6:1
- Output backlash $\leq 15'$ (0,25°)
- Max. speed: 3,000 rpm
- Materials:
casing: anodised aluminium
gears: hardened steel
- Weight: 1.4kg



OUTPUT
SHAFT

INPUT
BORE

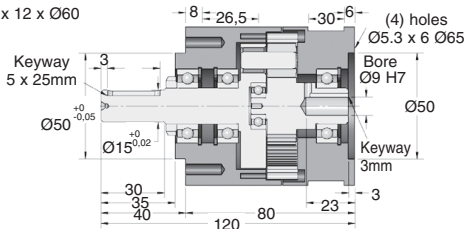
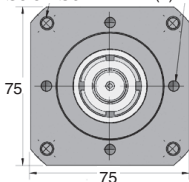
Options

- Can be modified to your specifications
- e.g. modified to suit your motor

(4) holes

$\varnothing 5.3 \times \varnothing 84$

(4) M6 x 12 x $\varnothing 60$



OUTPUT TORQUE (In Nm, values given as a guide only)

Ratios	3:1	4:1	5:1	6:1
3000	25	25	25	20
2000	30	30	30	23
1000	35	35	35	28
500	42	42	42	35
200	45	45	45	40
100	48	48	48	42
50	50	50	50	45

Large transmissible torque

DISCOUNTS

Qty	1+	2+	4+	6+
Disc.	List	-15%	-20%	On request

Part number	Ratio	Max. input speed (rpm)	Max. output speed (rpm)	Efficiency at 1000 rpm	Direction of input/output rotation	Price each
EHD08-3	3:1	3000	1000	92%	Same	814,30 €
EHD08-4	4:1	3000	750	92%	Same	814,30 €
EHD08-5	5:1	3000	600	92%	Same	814,30 €
EHD08-6	6:1	3000	500	92%	Same	814,30 €

Dimensions in mm

HPC

WEB
04/2020

www.hpceurope.com

Tel. +33(0)4 37 496 496



Internal epicyclic servo reducers

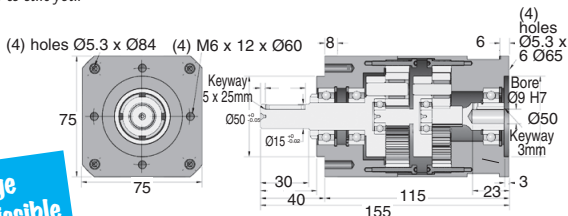
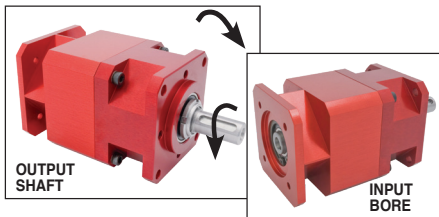
Torque up to 50Nm

EHD08

- Ratios from 9:1 to 36:1
- Output backlash $\leq 30'$ ($0,5^\circ$)
- Max. speed: 3,000 rpm
- Materials:
casing: anodised aluminium
gears: hardened steel
- Weight: 2.1 kg

Options

- Can be modified to your specifications
- e.g. modified to suit your motor



Large transmissible torque

DISCOUNTS

Qty	1+	2+	4+	6+
Disc.	List	-15%	-20%	On request

OUTPUT TORQUE (In Nm, values given as a guide only)

Ratios	9:1	12:1	15:1	16:1	18:1	20:1	24:1	25:1	30:1	36:1
INPUT	3000	35	35	35	38	42	42	42	42	36
SPEED	1000	43	43	43	45	46	46	46	46	41
(rpm)	500	45	45	45	48	48	48	48	48	42
	100	50	50	50	50	50	50	50	50	45
	50	50	50	50	50	50	50	50	50	45

Part number	Ratio	Max. input speed (rpm)	Max. output speed (rpm)	Efficiency at 1000 rpm	Direction of input/output rotation	Price each
EHD08-9	9:1	3000	333	86%	Same	1 222,39 €
EHD08-12	12:1	3000	250	86%	Same	1 222,39 €
EHD08-15	15:1	3000	200	86%	Same	1 222,39 €
EHD08-16	16:1	3000	187	86%	Same	1 222,39 €
EHD08-18	18:1	3000	166	86%	Same	1 222,39 €
EHD08-20	20:1	3000	150	86%	Same	1 222,39 €
EHD08-24	24:1	3000	125	86%	Same	1 222,39 €
EHD08-25	25:1	3000	120	86%	Same	1 222,39 €
EHD08-30	30:1	3000	100	86%	Same	1 222,39 €
EHD08-36	36:1	3000	83	86%	Same	1 222,39 €

Dimensions in mm

Internal epicyclic servo reducers



EHD12

Torque up to 140Nm

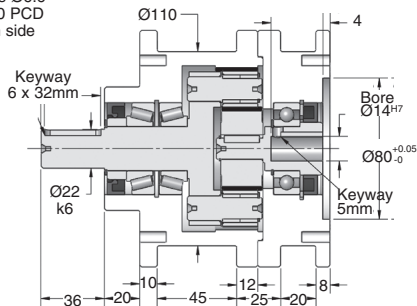
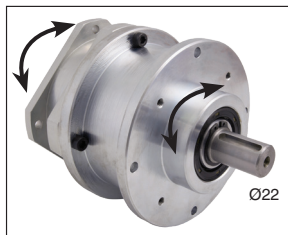
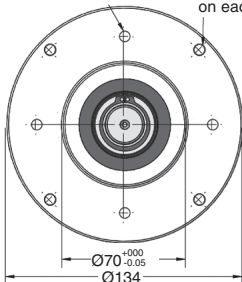
- Ratios from 3:1 to 6:1
- Output backlash $\leq 45'$ (0,25°)
- Max. speed: 3,000 rpm
- Materials:
casing: anodised aluminium
gears: hardened steel
- Weight: 9,25 kg

Options

- Can be modified to your specs
- e.g. modified to suit your motor

(4) holes M6 x 15
on $\varnothing 100$ PCD on
each side

(4) holes $\varnothing 6.6$
on $\varnothing 120$ PCD
on each side



OUTPUT TORQUE (In Nm, values given as a guide only)

Ratios	3:1	4:1	5:1	6:1
3000	75	75	75	60
2000	90	90	90	75
INPUT SPEED (rpm)	1000	110	110	110
	500	120	120	120
	200	130	130	110
	100	140	140	120
	50	140	140	120

Large transmissible torque

DISCOUNTS

Qty	1+	2+	4+	6+
Disc. List	-15%	-20%	-20%	On request

Part number	Ratio	Max. input speed (rpm)	Max. output speed (rpm)	Efficiency at 1000 rpm	Direction of input/output rotation	Price each
EHD12-3	3:1	3000	1000	92%	Same	1 461,25 €
EHD12-4	4:1	3000	750	92%	Same	1 461,25 €
EHD12-5	5:1	3000	600	92%	Same	1 461,25 €
EHD12-6	6:1	3000	500	92%	Same	1 461,25 €

Dimensions in mm

HPC

WEB
04/2020

www.hpceurope.com

Tel. +33(0)4 37 496 496



Internal epicyclic servo reducers

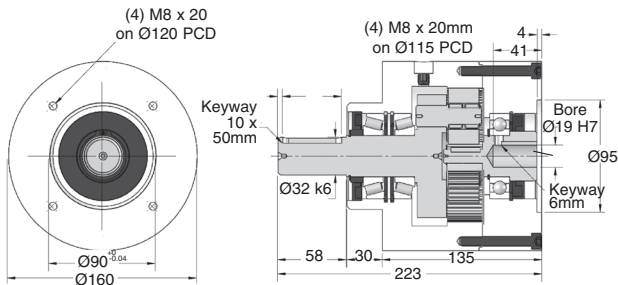
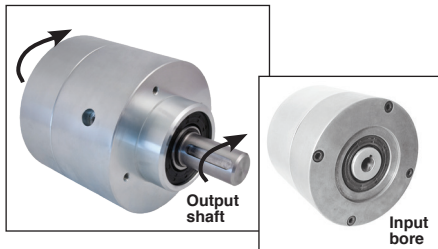
Torque up to 380Nm

EHD16

- Ratios from 3:1 to 6:1
- Output backlash $\leq 15'$ ($0,25^\circ$)
- Max. speed: 2,000 rpm
- Materials:
casing: anodised aluminium
gears: hardened steel
- Weight: 18.86 kg

Options

- Can be modified to your specs
- e.g. modified to suit your motor



OUTPUT TORQUE (In Nm, values given as a guide only)

Ratios	3:1	4:1	5:1	6:1	
INPUT SPEED (rpm)	2000	250	250	250	210
2000	300	300	300	300	250
500	350	350	350	350	300
200	350	350	350	350	300
100	380	380	380	380	320
50	380	380	380	380	320

Large transmissible torque

DISCOUNTS

Qty	1+	2+	4+	6+
Disc. List	-15%	-20%		On request

Part number	Ratio	Max. input speed (rpm)	Max. output speed (rpm)	Efficiency at 1000 rpm	Direction of input/output rotation	Price each
EHD16-3	3:1	2000	666,66	92%	Same	1 965,91 €
EHD16-4	4:1	2000	500,00	92%	Same	1 965,91 €
EHD16-5	5:1	2000	400,00	92%	Same	1 965,91 €
EHD16-6	6:1	2000	333,33	92%	Same	1 965,91 €

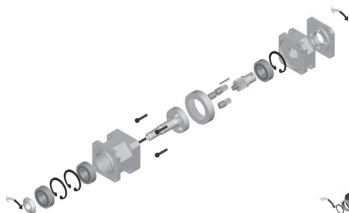
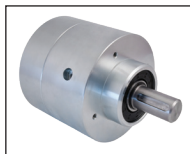
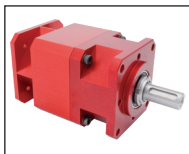
Dimensions in mm

Inline spur gearboxes

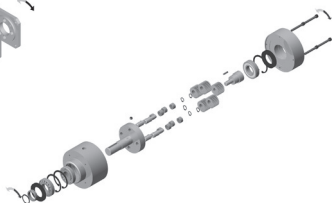
Technical information

EHD

- **Speed ratio: from 3:1 to 36:1**
- **Materials :**
housing anodised aluminium
gears in case hardened steel
- **Max. speed: 2,000 to 4,000 rpm** on input depending on model
- **Backlash: $\leq 15'$ ($0,25^\circ$)** on output
- **Lubrication: greased for life** (Shell Gadus S5V42P 2,5 grease)
- **Guarantee: 13 months**
- **Tolerances :**
• Ground shafts h7, Ra 0.8



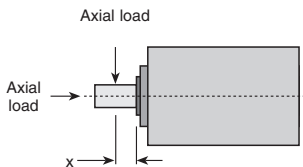
EHD 04, 06, 08, 12 range



EHD16 range

ADMISSIBLE LOADS

Part number	Distance 'X' (mm)	Output	
		Radial load (N)	Axial load (N)
EHD04	10	200	150
EHD06	10	250	150
EHD08	12	300	200
EHD12	20	600	600
EHD16	30	1000	1000



Data given based on input speed of 1,000 rpm.
Values given as an indication only.