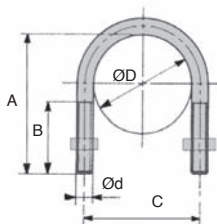


- Drawn steel wire, tolerance h9, overall tolerance 10
- 2 hexagonal nuts
- Material:
Zinc plated (8µm) steel A37 with corrosion protection.
- Not sold individually, please contact us for details



DISCOUNTS

Qty	1+	101+	201+	301+	401+	501+
Disc. Prix	-5%	-10%	-15%	-20%	On request	

Part number	For tube ØExternal ØD	Ø internal d	Keylines Ød	A (mm)	B (mm)	C (mm)	Stock*	Price each 1 to 100
EBM013	13	1/4	M6	28	18	19	✓	0,25 €
EBM017	17	3/8	M6	39	22	23	✓	0,27 €
EBM021	21	1/2	M6	41	24	27	✓	0,30 €
EBM027	27	3/4	M8	50	30	35	✓	0,42 €
EBM034	34	1	M8	55	32	42	✓	0,47 €
EBM042	42	1 ^{1/4}	M8	68	35	50	✓	0,47 €
EBM049	49	1 ^{1/2}	M8	70	36	57	✓	0,49 €
EBM060	60	2	M8	80	36	68	✓	0,56 €
EBM070	70	2 ^{1/4}	M8	100	40	78	✓	0,88 €
EBM076	76	2 ^{1/2}	M8	110	40	84	✓	0,88 €
EBM089	89	3	M10	116	40	99	✓	1,26 €
EBM102	102	3 ^{1/4}	M10	130	40	112	-	1,44 €
EBM108	108	3 ^{1/2}	M10	135	40	118	-	1,98 €
EBM114	114	4	M10	156	40	124	-	2,11 €
EBM133	133	4 ^{1/4}	M10	175	40	143	-	2,59 €
EBM139	139	5	M10	195	55	149	-	3,40 €
EBM159	159	5 ^{1/2}	M12	195	50	171	-	3,96 €
EBM168	168	6	M12	200	55	180	-	4,01 €
EBM219	219	8	M14	270	50	233	-	7,21 €

*Depending on availability - Dimensions in mm

Our other products



LVT

Miniature motorised actuator 2A, 2 amperers



E30

Right angle helical reducers, from 1.50 to 9 Nm



WSS

Symmetrical S shaped hook, Steel



SBS_L

Chain link, Stainless steel



T10courroie

T type timing belt, T10 Steel cored polyurethane



G3-ECO

Eco range Spur gear, Steel C45



T5P_T10P

Connecting plate for T type timing belts, T10



GP

Spring loaded toggle latch, With padlock-holder



GDR880

Straight track for slat top chain, Ranges 880 and 881



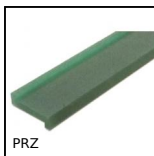
MEB

Moulded plastic bevel gear (nylon), 1:1



SR

Narrow spur rack, Stainless steel



PRZ

Wear strip for slat top chain, Z profile to be filled

Complementary products



EIM

Stainless steel U bolt, Stainless steel