

**- Compact cap nut**

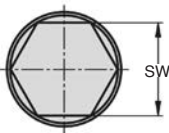
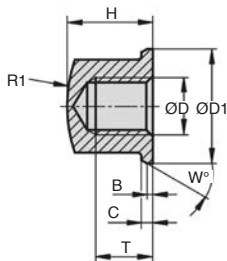
**- Material:**

Stainless steel 1.4404 (316L)

Polished finish

### Advantages

- The surface of the cap nut is polished and is specially shaped for use in hygienic environments
- The head of the nut is hemispherical and the collar has a conical top face
- The overall height has been kept deliberately low to reduce any inconvenient edges to a minimum.



### DISCOUNTS

Qty	1+	5+	10+	25+	50+
Disc	Net	-5%	-10%	-15%	On request

Part N°	ØD	ØD1	B	C	H	R1	SW	T	W	Price each
										1 to 4
EBC-3/HDSS	M3	6,8	0,25	0,5	4,95	8,8	5,5	3	20	3,40 €
EBC-4/HDSS	M4	9	0,30	0,8	6,5	10	7	4	30	3,43 €
EBC-5/HDSS	M5	10	0,50	1,0	7	16	8	4	30	3,61 €
EBC-6/HDSS	M6	12	0,80	1,0	9	16	10	6	30	4,41 €
EBC-8/HDSS	M8	16	0,80	1,6	12	20	13	8	30	4,56 €
EBC-10/HDSS	M10	20	1,00	2,0	14	32	16	10	30	5,48 €
EBC-12/HDSS	M12	24	1,00	2,5	16	35	19	11	30	10,63 €

All dimensions in mm

**0 825 88 6000**  
Service 0,15 € / min  
+ prix appel

## Our other products



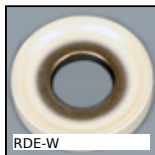
CLR

Gas spring, Straight clevis for use with a male clevis



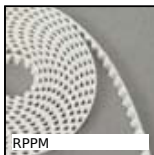
APB\_T

Rod for clamp, Bored



RDE-W

Sealing washer Hygienic Usit®, Stainless steel - White EPDM



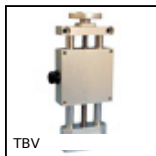
RPPM

RPP type belt by the metre, RPP8 Steel cored polyurethane



BSM\_LOK

Spring plunger with pressure pin, LONG-LOK - steel body, plastic pin



TBV

Manual lifting tables, For vertical strokes - Ø 12 mm column



NT61

Spur gear coaxial gearbox, from 5 to 14 Nm - Inline



PW\_PWG15

Wheel - precision range, Bronze



S4

Chain sprocket - Stainless steel, 4mm



DOG319

DC Motor and gearbox combination, from 4 to 9 Nm



SER69K

Quarter turn latch for the food industry, Stainless steel



KKP-AR

Linear bearing with inclined ball tracks, Heavy loads / -20° +200°

## Complementary products



DEP

Tools Hygienic Usit® and Hygienic Design®, Socket for mounting Hygienic

products