



# Motor-gearbox 12V and 24V DC

Torque from 4Nm to 9Nm

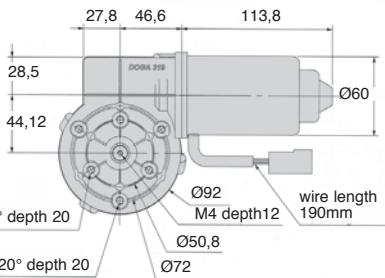
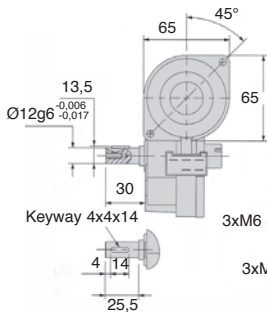
DOG319

- Gearbox type: worm
- Bearings: self-lubricating bushes
- Angular backlash: N/A
- Max. axial load: N/A
- Max. radial load: N/A
- Working temperature: -40°C to +80°C
- Weight 1.7kg
- Materials:
  - Screws: steel
- Wheel: POM



## Accessories

- Servo Amplifier **FIRSTDC-1Q-60/10**
- Speed controller **NANODC-1Q-30/3**
- Power Supplies **ALIDR120-24, ALIDR240-24**



## DISCOUNTS

Qty	1+	6+	10+
Disc.	List	-7%	On request

Part number	Ratios	No-load speed (rpm)	Loaded speed (rpm)	Nominal torque (Nm)	Nominal current (A)	Consistent card		Price each 1 to 5
						Nano	First	
<b>12 V DC Version</b>								
DOG319-12-15	81:1	18	15	9	3	No	Yes	214,91 €
DOG319-12-30	81:1	35	30	9	7	No	Yes	215,52 €
DOG319-12-45	81:1	50	45	8	6	No	Yes	214,91 €
DOG319-12-85	39:1	95	85	4	7	No	Yes	263,16 €
<b>12 V DC Version</b>								
DOG319-24-30	81:1	30	30	9	3	No	Yes	227,63 €
DOG319-24-45	81:1	45	45	9	3	No	Yes	203,94 €
DOG319-24-85	39:1	95	85	4	3,5	No	Yes	271,93 €

Dimensions in mm

## Our other products



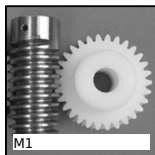
COA-COG

Surface mounting plate, Surface mounting plate for ball joint



DILC

Indexing plunger with cam, with cam



M1

Worm and wheel set, Machined plastic (delrin)



PRF\_SDD

Support for Ø12mm Prox detector, Ø12



VB

Small 6 lobe threaded handle - female, Duroplast - Stainless steel



VBFP

Small 6 lobe threaded handle - female, Duroplast - Brass



BPM-Z

Plastic slotted spring plunger with ball tip, Plastic body + plastic...



AT5P\_AT10P

Connecting plate for AT type timing belts, AT10



BLH70

Right angled gearbox, from 26 to 128 Nm



SLH

Horizontal toggle clamp, Horizontal



PAMF100EB

Articulated foot with sheet metal base



BAG

Steel Clamping collar, Steel

## Complementary products



FIRSTDC1Q60

Speed controller 10A, 10 A



ALIDR30

12 and 24V DC power supplies, 1,5 A and 2 A



MDPOT

Potentiometer,