

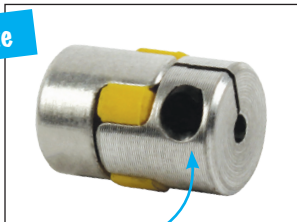


DKGS

Servo insert coupling Torque range: 0.5 to 3 Nm

- Elastic backlash free coupling
- Reliable torque transmission
- Maintenance free
- Low inertia/size
- Easy to assemble, even in confined spaces
- Reduces vibration
- Materials:
 - Hub: Aluminium
 - Spider: Polyurethane 92 Shore A (yellow)

Small size



Secured by a clamping hub

Applications

- Metrology, control systems, driving, machine tools, driving lead screws

Torque (Nm) transmissible by friction for a split hub

Bore size	Ø2	Ø3	Ø4	Ø5	Ø6	Ø7	Ø8	Ø9	Ø10	Ø11
DKGS-5	0,5	0,5	0,5	-	-	-	-	-	-	-
DKGS-7	-	0,8	1,1	1,2	1,2	1,2	-	-	-	-
DKGS-9	-	1,5	2	2,5	2,9	3	3	3	3	3

Part number	Nominal torque (Nm)	Tightened torque (Nm)	Max speed (rpm)	Moment of inertia (10^{-6} kg.m ²)	axial (Nm)	Misalignment radial (Nm)	angular
DKGS-5	0,5	0,25	38000	0,034	-0,2/+0,4	0,06	1°
DKGS-7	1,2	0,35	27000	0,196	-0,3/+0,6	0,10	1°
DKGS-9	3	0,75	19000	1,08	-0,4/+0,8	0,13	1°

Dimensions in mm

Characteristics

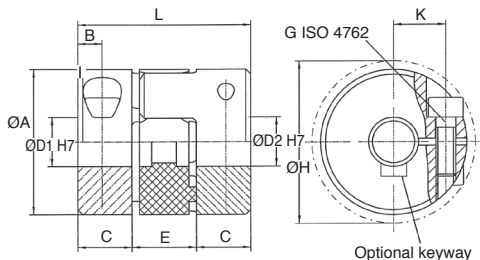
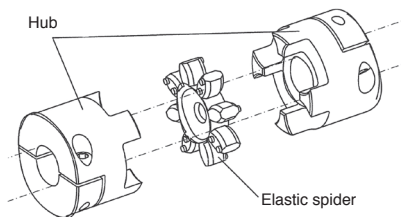
- Hardwearing
- Secured by a clamping hub
- Couplings are mounted pre-tensioned
- Shaft tolerance should be g6 or h7
- Contact surfaces should be grease free

Bore

- Choose ØD1 and ØD2 from the ranges shown

Option

- Keyway according to DIN6885-1



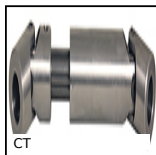
DISCOUNTS

Qty	1+	2+	4+
Disc.	List	-6%	On request

Part number	L	ØA	K	ØH	E	ØD1/ ØD2		C	B	G	Weight (g)	Price each	
						No keyway	with keyway					No keyway	with keyway
DKGS-5	15	10	3,2	11,5	5	2-4	-	5	2,5	M1,6	5	36,28 €	-
DKGS-7	22	14	5	16,5	8	3-7	6-7	7	3,5	M2	9	37,66 €	37,66 €
DKGS-9	30	20	7,3	23,5	10	3-11	6-11	10	5	M2,5	15	38,87 €	38,87 €

Dimensions in mm

Our other products



CT
Telescopic universal joint, Normal duty



MSP23
Masterplate® glueable insert Ø23, Cylindrical Ø23 with tapped ins...



MCLred
Reducing sleeve female/female, Cylindrical - steel



RT61
Self-centering locking Assembly, Medium/low torque



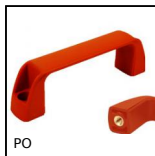
PF40
Worm and wheel gear reducer, up to 18 Nm



PRF_PA
Angle plate for aluminium profile, Adjustable plate



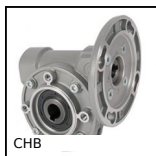
BCFH
Mushroom headed button Hygienic Usit®, With male thread and high head



PO
Pull handle - Multi-sector, Tapped recessed insert



PRS80
Stainless steel articulated foot Ø80,



CHB
Worm and wheel gear reducer, up to 41 Nm



T5courroie
T type timing belt, T5 Steel cored



RHTtcss
High Temperature Castor, up to 200kg

Complementary products



ADSR
Backlash free coupling Gerwah®, from 12.5 to 525Nm



EKGS
Backlash free coupling Gerwah®, from 0.5 to 35Nm