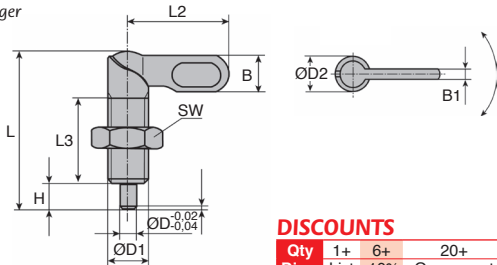
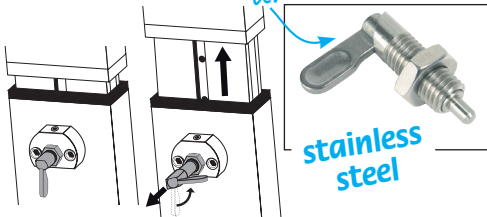


- With or without possibility to lock in open position
- Material: Stainless steel
- Locking nut supplied

Uses

- Indexing plungers are used when the indexing pin must be fully retracted.
- Turn the lever through 180° to insert the plunger
- A small pin allows blocking in the open position



DISCOUNTS

Qty	1+	6+	20+
Disc.	List	-10%	On request

Part number	ØD1	ØD	ØD2	L	L2	L3	B	B1	H	SW	Fx30°	Spring strength		Price each 1 to 5	
												initial F(N)	final F2(N)		
DIV12-5/SS	M12	5	12	46,8	30	25	10,8	3,6	8	19	1,3	8	15	✓	20,53 €
DIV12x1.5-5/SS	M12x1.5	5	12	46,8	30	25	10,8	3,6	8	19	1,3	8	15	-	20,53 €
DIV12-6/SS	M12	6	12	46,8	30	25	10,8	3,6	8	19	1,8	8	15	✓	20,53 €
DIV12x1.5-6/SS	M12x1.5	6	12	46,8	30	25	10,8	3,6	8	19	1,8	8	15	-	20,53 €
DIV12-8/SS	M12	8	12	46,8	30	25	10,8	3,6	8	19	2,3	8	15	✓	20,53 €
DIV12x1.5-8/SS	M12x1.5	8	12	46,8	30	25	10,8	3,6	8	19	2,3	8	15	-	20,53 €
DIV16-6/SS	M16	6	16	60,4	40	32	14,4	4,8	10	24	1,8	15	35	✓	23,04 €
DIV16x1.5-6/SS	M16x1.5	6	16	60,4	40	32	14,4	4,8	10	24	1,8	15	35	-	23,04 €
DIV16-8/SS	M16	8	16	60,4	40	32	14,4	4,8	10	24	2,3	15	35	✓	23,04 €
DIV16x1.5-8/SS	M16x1.5	8	16	60,4	40	32	14,4	4,8	10	24	2,3	15	35	-	23,04 €
DIV16-10/SS	M16	10	16	60,4	40	32	14,4	4,8	10	24	2,8	15	35	✓	23,04 €
DIV16x1.5-10/SS	M16x1.5	10	16	60,4	40	32	14,4	4,8	10	24	2,8	15	35	-	23,04 €
DIV20-8/SS	M20	8	20	70,0	50	35	18,0	6,0	12	30	2,3	20	60	-	28,69 €
DIV20x1.5-8/SS	M20x1.5	8	20	70,0	50	35	18,0	6,0	12	30	2,3	20	60	-	28,69 €
DIV20-10/SS	M20	10	20	70,0	50	35	18,0	6,0	12	30	2,8	20	60	-	28,69 €
DIV20x1.5-10/SS	M20x1.5	10	20	70,0	50	35	18,0	6,0	12	30	2,8	20	60	-	28,69 €
DIV20-12/SS	M20	12	20	70,0	50	35	18,0	6,0	12	30	3,0	20	60	✓	28,69 €
DIV20x1.5-12/SS	M20x1.5	12	20	70,0	50	35	18,0	6,0	12	30	3,0	20	60	-	28,69 €

*Subject to availability - Dimensions in mm