

Indexing plunger with cam



DILC_G

Steel - Black thermoplastic

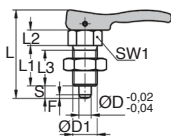
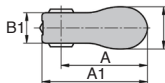
- Indexing plunger with cam lever

- The lever makes handling quick and easy

- Materials

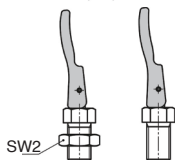
Threaded sleeve and locking pin in free-cutting steel
Handle in glass-fibre reinforced thermoplastic
PPA (high temperature resistant)

- Operating temperature 160°C (250°C peak)



Advantages

- Quick and easy to use
- Suitable for high temperature applications
- With integrated locking function



With or without nut

DISCOUNTS

Qty	1+	6+	20+
Disc.	List -10%	On request	

Part number	L	L1	L2	L3	SW1	SW2	Fx30°	Spring force initial pressure	
								F1 (N)	F2 (N)
Without nut									
DILC10-41A/G	39	17	7	15	13	-	1,3	5	12
DILC12-41A/G	44	20	8	17	14	-	1,8	6	14
DILC16-68A/G	56,9	26	10	23	19	-	2,3	15	35
DILC20-68A/G	62,9	28	12	25	22	-	2,8	15	34
With nut									
DILC10-41B/G	39	17	7	15	13	17	1,3	5	12
DILC12-41B/G	44	20	8	17	14	19	1,8	6	14
DILC16-68B/G	56,9	26	10	23	19	24	2,3	15	35
DILC20-68B/G	62,9	28	12	25	22	30	2,8	15	34

Part number	A	A1	B	B1	ØD	ØD1	Stroke S	Price each	
								1 to 5	
Without nut									
DILC10-41A/G	31,7	41,7	17,8	12,9	5	M10x1	5		14,82 €
DILC12-41A/G	31,6	41,7	17,8	12,9	6	M12x1,5	6		16,48 €
DILC16-68A/G	55,5	67,8	26,9	19,4	8	M16x1,5	8		19,68 €
DILC20-68A/G	53,4	67,8	26,9	19,4	10	M20x1,5	10		31,96 €
With nut									
DILC10-41B/G	31,7	41,7	17,9	12,9	5	M10x1	5		15,05 €
DILC12-41B/G	31,6	41,7	17,9	12,9	6	M12x1,5	6		16,72 €
DILC16-68B/G	55,5	67,8	26,9	19,4	8	M16x1,5	8		20,16 €
DILC20-68B/G	53,4	67,8	26,9	19,4	10	M20x1,5	10		32,60 €

Dimensions in mm



Indexing plunger with cam

Steel - Red thermoplastic

DILCR

- Indexing plunger with cam lever

- The lever makes handling quick and easy

- Materials

Threaded sleeve and locking

pin in free-cutting steel

Handle in glass-fibre

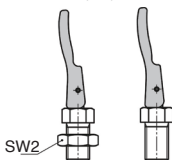
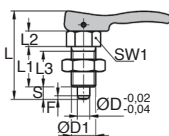
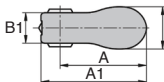
reinforced thermoplastic

PPA (high temperature

resistant) (red traffic

RAL3020)

- Operating temperature 160°C (250°C peak)



With or without nut



Advantages

- Quick and easy to use
- Suitable for high temperature applications
- With integrated locking function

DISCOUNTS

Qty	1+	6+	20+
Disc.	List -10%	On request	

Part number	L	L1	L2	L3	SW1	SW2	Fx30°	Spring force initial pressure	
								F1 (N)	F2 (N)
Without nut									
DILC10-41A/R	39	17	7	15	13	-	1,3	5	12
DILC12-41A/R	44	20	8	17	14	-	1,8	6	14
DILC16-68A/R	56,9	26	10	23	19	-	2,3	15	35
DILC20-68A/R	62,9	28	12	25	22	-	2,8	15	34
With nut									
DILC10-41B/R	39	17	7	15	13	17	1,3	5	12
DILC12-41B/R	44	20	8	17	14	19	1,8	6	14
DILC16-68B/R	56,9	26	10	23	19	24	2,3	15	35
DILC20-68B/R	62,9	28	12	25	22	30	2,8	15	34

Part number	A	A1	B	B1	ØD	ØD1	Stroke S	Price each
								1 to 5
Without nut								
DILC10-41A/R	31,7	41,7	17,8	12,9	5	M10x1	5	14,82 €
DILC12-41A/R	31,6	41,7	17,8	12,9	6	M12x1,5	6	16,48 €
DILC16-68A/R	55,5	67,8	26,9	19,4	8	M16x1,5	8	19,68 €
DILC20-68A/R	53,4	67,8	26,9	19,4	10	M20x1,5	10	31,96 €
With nut								
DILC10-41B/R	31,7	41,7	17,9	12,9	5	M10x1	5	15,05 €
DILC12-41B/R	31,6	41,7	17,9	12,9	6	M12x1,5	6	16,72 €
DILC16-68B/R	55,5	67,8	26,9	19,4	8	M16x1,5	8	20,16 €
DILC20-68B/R	53,4	67,8	26,9	19,4	10	M20x1,5	10	32,60 €

Dimensions in mm

Indexing plunger with cam



DILCGSS **Stainless steel** - Black thermoplastic

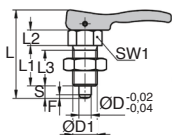
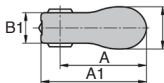
- Indexing plunger with cam lever

- The lever makes handling quick and easy

- Materials

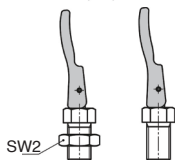
Threaded sleeve and locking pin in 303 stainless steel
Handle in glass-fibre reinforced thermoplastic PPA (high temperature resistant)

- Operating temperature 160°C (250°C peak)



Advantages

- Quick and easy to use
- Suitable for high temperature applications
- With integrated locking function



With or without nut

DISCOUNTS

Qty	1+	6+	20+
Disc.	List -10%	On request	

Part number	L	L1	L2	L3	SW1	SW2	Fx30°	Spring force initial pressure	
								F1 (N)	F2 (N)
Without nut									
DILC10-41A/G/SS	39	17	7	15	13	-	1,3	5	12
DILC12-41A/G/SS	44	20	8	17	14	-	1,8	6	14
DILC16-68A/G/SS	56,9	26	10	23	19	-	2,3	15	35
DILC20-68A/G/SS	62,9	28	12	25	22	-	2,8	15	34
With nut									
DILC10-41B/G/SS	39	17	7	15	13	17	1,3	5	12
DILC12-41B/G/SS	44	20	8	17	14	19	1,8	6	14
DILC16-68B/G/SS	56,9	26	10	23	19	24	2,3	15	35
DILC20-68B/G/SS	62,9	28	12	25	22	30	2,8	15	34

Part number	A	A1	B	B1	ØD	ØD1	Stroke S	Price each	
								1 to 5	
Without nut									
DILC10-41A/G/SS	31,7	41,7	17,8	12,9	5	M10x1	5	21,60	€
DILC12-41A/G/SS	31,6	41,7	17,8	12,9	6	M12x1,5	6	25,53	€
DILC16-68A/G/SS	55,5	67,8	26,9	19,4	8	M16x1,5	8	34,64	€
DILC20-68A/G/SS	53,4	67,8	26,9	19,4	10	M20x1,5	10	66,82	€
With nut									
DILC10-41B/G/SS	31,7	41,7	17,9	12,9	5	M10x1	5	22,88	€
DILC12-41B/G/SS	31,6	41,7	17,9	12,9	6	M12x1,5	6	26,95	€
DILC16-68B/G/SS	55,5	67,8	26,9	19,4	8	M16x1,5	8	36,76	€
DILC20-68B/G/SS	53,4	67,8	26,9	19,4	10	M20x1,5	10	68,07	€

Dimensions in mm

- Indexing plunger with cam lever

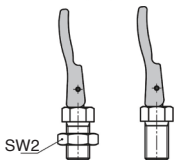
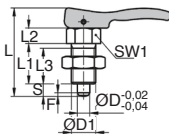
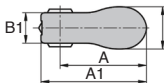
- The lever makes handling quick and easy

- Materials

Threaded sleeve and locking pin in 303 stainless steel
Handle in glass-fibre reinforced thermoplastic
PPA (high temperature resistant)

- Operating temperature 160°C (250°C peak) (red traffic RAL3020)

- Operating temperature 160°C (250°C peak)



With or without nut



Advantages

- Quick and easy to use
- Suitable for high temperature applications
- With integrated locking function

DISCOUNTS

Qty	1+	6+	20+
Disc.	List	-10%	On request

Part number	L	L1	L2	L3	SW1	SW2	Fx30°	Spring force initial pressure	
								F1 (N)	F2 (N)
Without nut									
DILC10-41A/R/SS	39	17	7	15	13	-	1,3	5	12
DILC12-41A/R/SS	44	20	8	17	14	-	1,8	6	14
DILC16-68A/R/SS	56,9	26	10	23	19	-	2,3	15	35
DILC20-68A/R/SS	62,9	28	12	25	22	-	2,8	15	34
With nut									
DILC10-41B/R/SS	39	17	7	15	13	17	1,3	5	12
DILC12-41B/R/SS	44	20	8	17	14	19	1,8	6	14
DILC16-68B/R/SS	56,9	26	10	23	19	24	2,3	15	35
DILC20-68B/R/SS	62,9	28	12	25	22	30	2,8	15	34

Part number	A	A1	B	B1	ØD	ØD1	Stroke S	Price each
								1 to 5
Without nut								
DILC10-41A/R/SS	31,7	41,7	17,8	12,9	5	M10x1	5	21,60 €
DILC12-41A/R/SS	31,6	41,7	17,8	12,9	6	M12x1,5	6	25,53 €
DILC16-68A/R/SS	55,5	67,8	26,9	19,4	8	M16x1,5	8	34,64 €
DILC20-68A/R/SS	53,4	67,8	26,9	19,4	10	M20x1,5	10	66,82 €
With nut								
DILC10-41B/R/SS	31,7	41,7	17,9	12,9	5	M10x1	5	22,88 €
DILC12-41B/R/SS	31,6	41,7	17,9	12,9	6	M12x1,5	6	26,95 €
DILC16-68B/R/SS	55,5	67,8	26,9	19,4	8	M16x1,5	8	36,76 €
DILC20-68B/R/SS	53,4	67,8	26,9	19,4	10	M20x1,5	10	68,07 €

Dimensions in mm

Our other products



SCR

Suction cup threaded insert, Adaptor for insert



PCLA_M

Technopolymer clamping lever - female, Plastic



PAP

Handle for aluminium profile, Ergonomic handle



MAX22

Motor-gearbox 12V and 24V DC, from 0,07 to 0,2Nm



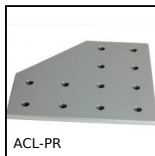
BOX-TOR-INCH

Box set of Nitrile O-rings in inch NBR90Sh A, For fasteners and fittings...



SRG

Adjustable latch clamp with strike plate, Stroke from 96mm to 121,7mm



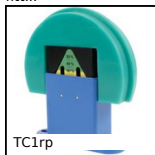
ACL-PR

Joining plate for aluminium profile, Right angled connection



SLVVlok

Vertical toggle clamp, Vertical toggle clamp / vertical foot



TC1rp

Automatic chain tensioner, With 180° guide



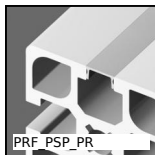
BLH70

Right angled gearbox, from 26 to 128 Nm



PW_PWG05

Wheel - precision range, Bronze



PRF_PSP_PR

Dual purpose strip and cover for aluminium profile, Inserts into slot

Complementary products



DIV

Locking bolt, With grip - Steel