

Lever operated locking bolt



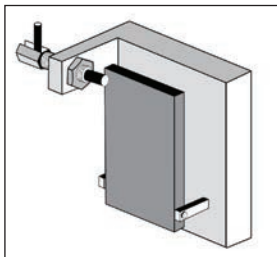
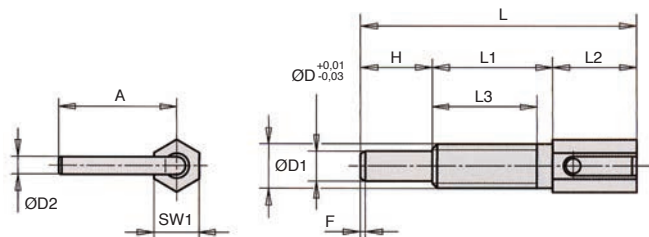
DIL

Lift the lever to unlock

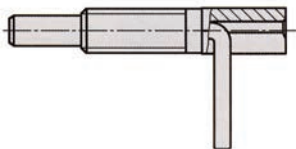
- Locking bolt
- Material: steel (class 5.8)
- Finish: blue zinc plated

Info.

- Locking bolts can be used where lateral movement needs to be restricted
- Raising the lever unlocks the bolt



Typical application: locking



DISCOUNTS

Qty	1+	6+	20+
Disc.	List -10%	On request	

Part number	ØD	ØD1	ØD2	L	L1	L2	L3	H	A	SW1	Fx30°	Spring strength			Price each 1 to 5	
												initial F1 (N)	final F2 (N)	Tightening Force max (Nm)		
DIL6	4	M6	2,3	41,5	20,0	12,0	17,0	9,5	15,5	6	0,7	3	10	1,6	✓	7,95 €
DIL10	6	M10	3,5	65,0	33,5	17,5	30,0	14,0	22,9	10	1,1	4	16	10,0	✓	8,51 €
DIL12	8	M12	4,7	73,0	31,8	22,2	28,0	19,0	31,2	12	1,3	4	22	13,0	✓	9,25 €
DIL16	10	M16	4,7	102,5	50,5	27,0	44,5	25,0	32,7	16	1,6	4	23	42,0	✓	11,05 €

*Depending on availability - Dimensions in mm

Our other products



PM4

Worm and wheel set,
Bronze



M0

Worm and wheel set,
Bronze



BPM-Z

Plastic slotted spring
plunger with ball tip,
Plastic body + stainle...



H1

Crossed helical gear
crossed axis at 90°,
Steel 20NCD2



Q6

Deep groove ball
bearing, Steel



PSG25S

Spur gear - precision
range, Stainless steel
316



BOXsap

Boxed set of spring
pins ISO8752, Boxed
set - Split ISO 8752



CCL

Standard wire
thimble, Steel



GG3

Ground spur gear,
Heat treated steel



AT10-32ECO

AT type timing pulley,
Economy range -



RPCtcss

Swivel castor with
central hole, Stainless



F7-P-AM

Multifunction display,
Magnetic ring

Complementary products



SDA

Locking bolt support
bracket, Mounting
holes parallel to
locating bolt



SDB

Locking bolt support
bracket, Mounting
holes at 90° to
locating bolt



PITAss

Locking bolt, with T
handle



DILC

Indexing plunger with
cam, with cam