

# Extractable dowel pin **DIN 7979D** **Ste** **DIN** **Stock**

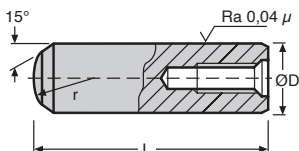
## DHX

## Hardened steel

- Easy extraction for holes where access is difficult or restricted
- External diameter tolerance: m6
- Material: hardened steel (DIN 7979D)
- Sold by the packet

### Info.

- Ground flat along length allows air to escape during insertion/removal



### DISCOUNTS

Qty	1+	3+	5+	10+
Disc.	List	-20%	-30%	On request

Part number	ØD	Thread	Length	Qty per packet	Price per packet
	m6		L	Stock*	
DHX4-10/B	4	M2	10	10	✓ 37,96 €
DHX4-12/B	4	M2	12	10	✓ 38,11 €
DHX4-14/B	4	M2	14	10	✓ 38,23 €
DHX4-16/B	4	M2	16	10	✓ 38,39 €
DHX4-20/B	4	M2	20	10	✓ 38,78 €
DHX5-10/B	5	M3	10	10	✓ 21,75 €
DHX5-12/B	5	M3	12	10	✓ 21,87 €
DHX5-16/B	5	M3	16	10	✓ 22,00 €
DHX5-20/B	5	M3	20	10	✓ 22,48 €
DHX5-24/B	5	M3	24	10	✓ 22,84 €
DHX5-30/B	5	M3	30	10	✓ 23,91 €
DHX6-12/B	6	M4	12	10	✓ 21,10 €
DHX6-16/B	6	M4	16	10	✓ 18,91 €
DHX6-20/B	6	M4	20	10	✓ 17,71 €
DHX6-24/B	6	M4	24	10	✓ 17,79 €
DHX6-30/B	6	M4	30	10	✓ 18,01 €
DHX6-40/B	6	M4	40	10	✓ 18,48 €
DHX6-60/B	6	M4	60	10	✓ 21,35 €

Part number	ØD	Thread	Length	Qty per packet	Price per packet
	m6		L	Stock*	
DHX8-16/B	8	M5	16	10	✓ 21,79 €
DHX8-20/B	8	M5	20	10	✓ 18,55 €
DHX8-24/B	8	M5	24	10	✓ 18,73 €
DHX8-28/B	8	M5	28	10	✓ 18,86 €
DHX8-30/B	8	M5	30	10	✓ 19,43 €
DHX8-40/B	8	M5	40	10	✓ 20,14 €
DHX8-50/B	8	M5	50	10	✓ 21,10 €
DHX10-20/B	10	M6	20	10	✓ 23,74 €
DHX10-24/B	10	M6	24	10	✓ 24,36 €
DHX10-30/B	10	M6	30	10	✓ 20,98 €
DHX10-40/B	10	M6	40	10	✓ 21,92 €
DHX10-45/B	10	M6	45	10	- 22,52 €
DHX10-50/B	10	M6	50	10	✓ 23,17 €
DHX10-60/B	10	M6	60	10	✓ 24,36 €
DHX12-40/B	12	M6	40	10	✓ 25,00 €
DHX12-60/B	12	M6	60	10	✓ 29,11 €
DHX12-90/B	12	M6	90	10	✓ 46,13 €
DHX12-100/B	12	M6	100	10	- 43,15 €

\*Depending on availability - Dimensions in mm

- For locking one part to another
- Relative positioning
- 15° chamfer
- Material: hardened steel 100 Cr6 rectified 58-60HRC
- Conforms to DIN 6325 (ISO 8734)
- For information on shear strength, please see technical information
- Sold by the packet



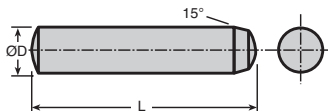
### DISCOUNTS

Qty	1+	5+	10+	20+
Disc.	List	-20%	-30%	On request

Part number	ØD m6	Length L	Qty per packet	Stock*	Price each per packet
DH1-5/B	1,0	5	100	✓	6,41 €
DH1-6/B	1,0	6	100	✓	6,41 €
DH1-5-5/B	1,5	5	100	✓	4,72 €
DH1-5-6/B	1,5	6	100	✓	6,41 €
DH1-5-8/B	1,5	8	100	✓	5,34 €
DH1-5-10/B	1,5	10	100	✓	5,58 €
DH2-6/B	2,0	6	100	✓	5,34 €
DH2-8/B	2,0	8	100	✓	5,66 €
DH2-10/B	2,0	10	100	✓	5,89 €
DH2-12/B	2,0	12	100	✓	6,23 €
DH2-14/B	2,0	14	100	✓	6,65 €
DH2-16/B	2,0	16	100	✓	7,01 €
DH2-30/B	2,0	30	100	✓	18,48 €
DH2-5-10/B	2,5	10	100	✓	6,25 €
DH2-5-12/B	2,5	12	100	✓	6,41 €
DH3-6/B	3,0	6	100	✓	5,58 €
DH3-8/B	3,0	8	100	✓	5,37 €
DH3-10/B	3,0	10	100	✓	5,66 €
DH3-12/B	3,0	12	100	✓	5,98 €
DH3-16/B	3,0	16	100	✓	6,77 €
DH3-18/B	3,0	18	100	✓	7,18 €
DH3-20/B	3,0	20	100	✓	7,46 €
DH3-24/B	3,0	24	100	✓	8,16 €
DH3-30/B	3,0	30	100	✓	9,32 €
DH3-32/B	3,0	32	100	✓	9,66 €
DH3-40/B	3,0	40	100	✓	14,52 €
DH4-6/B	4,0	6	100	✓	6,80 €
DH4-8/B	4,0	8	100	✓	6,74 €

Part number	ØD m6	Length L	Qty per packet	Stock*	Price each per packet
DH4-10/B	4,0	10	100	✓	7,37 €
DH4-12/B	4,0	12	100	✓	7,55 €
DH4-14/B	4,0	14	100	✓	7,90 €
DH4-16/B	4,0	16	100	✓	8,38 €
DH4-18/B	4,0	18	100	✓	8,81 €
DH4-20/B	4,0	20	100	✓	9,28 €
DH4-28/B	4,0	28	100	-	11,04 €
DH4-30/B	4,0	30	100	✓	11,45 €
DH4-32/B	4,0	32	100	-	11,89 €
DH4-40/B	4,0	40	100	✓	14,23 €
DH4-50/B	4,0	50	100	✓	21,25 €
DH4-60/B	4,0	60	100	✓	29,47 €
DH5-8/B	5,0	8	25	✓	5,11 €
DH5-10/B	5,0	10	25	✓	5,13 €
DH5-12/B	5,0	12	25	✓	5,21 €
DH5-14/B	5,0	14	25	✓	5,34 €
DH5-16/B	5,0	16	25	✓	5,50 €
DH5-20/B	5,0	20	25	✓	5,69 €
DH5-24/B	5,0	24	25	✓	5,98 €
DH5-26/B	5,0	26	25	✓	6,15 €
DH5-28/B	5,0	28	25	✓	6,23 €
DH5-30/B	5,0	30	25	✓	6,33 €
DH5-36/B	5,0	36	25	✓	6,80 €
DH5-40/B	5,0	40	25	✓	7,01 €
DH5-50/B	5,0	50	25	✓	7,90 €
DH6-10/B	6,0	10	25	✓	5,58 €
DH6-12/B	6,0	12	25	✓	5,61 €
DH6-14/B	6,0	14	25	✓	5,78 €

\*Depending on availability - Dimensions in mm



## DISCOUNTS

Qty	1+	5+	10+	20+
Disc.	List	-20%	-30%	On request

Part number	ØD m6	Length L	Qty per packet	Stock*	Price each per packet
DH6-16/B	6,0	16	25	✓	5,78 €
DH6-18/B	6,0	18	25	✓	5,93 €
DH6-20/B	6,0	20	25	✓	6,15 €
DH6-24/B	6,0	24	25	✓	6,33 €
DH6-26/B	6,0	26	25	✓	6,61 €
DH6-28/B	6,0	28	25	✓	6,74 €
DH6-30/B	6,0	30	25	✓	6,90 €
DH6-36/B	6,0	36	25	✓	7,35 €
DH6-40/B	6,0	40	25	✓	7,68 €
DH6-50/B	6,0	50	25	✓	8,81 €
DH6-60/B	6,0	60	25	✓	10,11 €
DH8-16/B	8,0	16	25	✓	8,18 €
DH8-18/B	8,0	18	25	✓	8,23 €
DH8-20/B	8,0	20	25	✓	8,28 €
DH8-24/B	8,0	24	25	✓	8,76 €
DH8-30/B	8,0	30	25	✓	9,52 €

Part number	ØD m6	Length L	Qty per packet	Stock*	Price each per packet
DH8-40/B	8,0	40	25	✓	10,71 €
DH8-50/B	8,0	50	25	✓	12,19 €
DH8-80/B	8,0	80	25	✓	20,51 €
DH10-20/B	10,0	20	25	✓	9,66 €
DH10-26/B	10,0	26	25	✓	11,01 €
DH10-30/B	10,0	30	25	✓	11,82 €
DH10-36/B	10,0	36	25	✓	13,14 €
DH10-40/B	10,0	40	25	-	13,93 €
DH10-45/B	10,0	45	25	✓	14,79 €
DH10-50/B	10,0	50	25	✓	15,79 €
DH10-60/B	10,0	60	25	✓	17,92 €
DH10-80/B	10,0	80	25	-	24,81 €
DH12-20/B	12,0	20	25	-	14,69 €
DH12-30/B	12,0	30	25	✓	16,87 €
DH12-40/B	12,0	40	25	✓	19,50 €

\*Depending on availability - Dimensions in mm

## Our other products



DB  
Steel bevel gear, 2:1



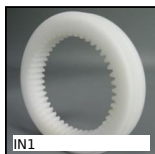
BPfss  
Pressed stainless steel flange bearing, Stainless steel



VTLF  
3 lobed handle, Polyamide - Brass



MAX22  
Motor-gearbox 12V and 24V DC, from 0,07 to 0,2Nm



IN1  
Internal gear, Machined plastic (delrin)



PF30  
Worm and wheel gear reducer, up to 8.80 Nm



SVR20  
Screwjack with travelling nut, with moving nut



PTR  
Idler chain sprocket, For standard applications



VCMB  
Dual-thread screw wood/metal, Stainless steel



GPB  
Threaded spherical knob, With brass insert



RGS  
Rotex® GS backlash free jaw coupling, from 0.5 to 190Nm



BTC\_M  
End cap with threaded insert for square tube, With threaded insert

## Complementary products



DP  
Dowel pin, Solid ISO 2338



BOXdhx  
Boxed set of threaded dowel pins DIN7979D, Boxed set - extractable D...



DH  
Dowel pin, Solid DIN 6325