

- Suction cup to lift and move objects

- Materials:

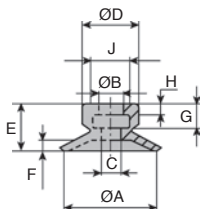
nitrile (NBR) : black color

silicone (SI) : translucent

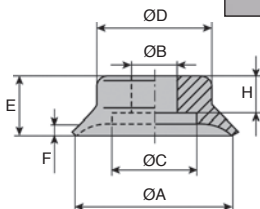
Uses

- Ideal where accuracy is required

- Only for use on flat surfaces



DFG05A to DFG15A



DFG20 to DFG50



DISCOUNTS

Qty	1+	50+	100+	150+	200+
Disc.	List	-5%	-10%	-15%	On request

Part number	ØA	ØB	ØC	ØD	E	F	G	H	J	Corresponding thread insert	Price each	
											Stock*	1 to 49
Nitrile												
DFG05A-NBR	5,0	4,0	1,4	7,5	6,5	0,8	4	2,0	6	TM5M5	-	2,69 €
DFG06A-NBR	6,0	4,0	2,0	7,5	6,5	0,8	4	2,0	6		-	2,53 €
DFG08A-NBR	8,0	4,0	2,0	8,0	7,0	1,2	4	2,0	6		✓	2,53 €
DFG10A-NBR	10,0	4,0	2,0	8,5	7,5	1,5	4	2,0	6		✓	2,61 €
DFG15-NBR	15,0	4,0	2,0	9,0	8,0	2,0	4	2,0	6	SCR15M5	-	4,92 €
DFG20-NBR	20,0	6,0	11,0	15,0	12,5	2,3	-	7,0	-	SCR20M5	✓	2,89 €
DFG25-NBR	25,0	6,0	11,0	16,0	14,0	3,0	-	7,0	-	-	-	2,77 €
DFG30-NBR	30,0	6,0	11,0	14,0	12,0	2,0	-	7,0	-	SCR20BM6	✓	2,89 €
DFG40-NBR	40,0	6,0	11,0	21,0	14,0	4,0	-	7,0	-	✓	4,72 €	
DFG50-NBR	50,0	8,0	20,0	27,0	15,0	3,5	-	7,0	-	SCR50M6	-	5,70 €
Silicone												
DFG05A-SI	5,0	4,0	1,4	7,5	6,5	0,8	4	2,0	6	TM5M5	-	3,21 €
DFG06A-SI	6,0	4,0	2,0	7,5	6,5	0,8	4	2,0	6		-	3,21 €
DFG08A-SI	8,0	4,0	2,0	8,0	7,0	1,2	4	2,0	6		-	3,21 €
DFG10A-SI	10,0	4,0	2,0	8,5	7,5	1,5	4	2,0	6		✓	3,31 €
DFG15-SI	15,0	4,0	2,0	9,0	8,0	2,0	4	2,0	6	SCR15M5	✓	5,67 €
DFG20-SI	20,0	6,0	11,0	15,0	12,5	2,3	-	7,0	-	SCR20M5	✓	3,83 €
DFG25-SI	25,0	6,0	11,0	16,0	14,0	3,0	-	7,0	-	-	-	2,61 €
DFG30-SI	30,0	6,0	11,0	14,0	12,0	2,0	-	7,0	-	SCR20BM6	✓	3,54 €
DFG40-SI	40,0	6,0	11,0	24,0	14,0	4,0	-	7,0	-	-	-	5,24 €
DFG50-SI	50,0	8,0	20,0	27,0	15,0	3,5	-	7,0	-	SCR50M6	-	8,32 €

*Depending on availability - Dimensions in mm

Our other products



PC575K

Chain sprocket with hardened teeth, 19.05mm (DIN12B-1)



CF5

Miniature cam follower, Miniature



KKP-AR

Linear bearing with inclined ball tracks, Heavy loads / -20° +200°



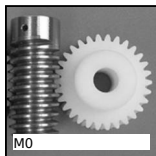
NCT

Square tube connector, Fixed angle



PTGP

Tensioner pulley, For flat belts



M0

Worm and wheel set, Machined plastic (delrin)



MAX22

Motor-gearbox 12V and 24V DC, from 0,07 to 0,2Nm



RJA00_28

Sealing strip, Clipping



T5P_T10P

Connecting plate for T type timing belts, T5



FF40

Offset spur gear reducer, from 59 to



DOG258

Motor-gearbox 12V and 24V DC, from 12



BLHT50

Right angled gearbox, from 11.50 to 30 Nm

Complementary products



TM_CTM_CTF

Suction cup threaded insert, Insert for suction cup - Tread click-in



SCR

Suction cup threaded insert, Insert for suction cup - Socket screw