

Stainless steel Worm and wheel motorgearbox

Create your set

For food industry

Supporting feet **RFV-FP**
(tome 2 p.326)

Protective cover closed
RFV-CAP (tome 2 p.327)

Motor 0,18kW à 1,5kW
(tome 2 p.318)

Gear reducer **RFV40, RFV50, RFV63**,
Reduction ratio of 7,5/1 to 100/1,
3 flanges to choose depending
on the motor selected

RFV-CAP protective cover
(tome 2 p.327)
open or closed to prevent
material retention in the output
bore

Reaction arm **RFV-BR**
(tome 2 p.325) to better
support the load

* See data sheet (tome 2 p.328)

Stainless steel AC asynchronous motor 1.1 to 1.5 kW **Sta**

DER90

Torque up to 33 Nm

- 3 phase asynchronous motor ideal for use in the food industry

- B14 flange
- 4 pole motor
- Speed under no load: 1,500 rpm
- Supply voltage 230/400 VAC
- All surfaces smooth and polished to avoid dirt retention
- Enclosed housing, no ventilation
- Sealed terminal box
- Ingress protection IP66
- Insulation class ISO F
- Material:
Stainless steel

stainless steel



B14 flange

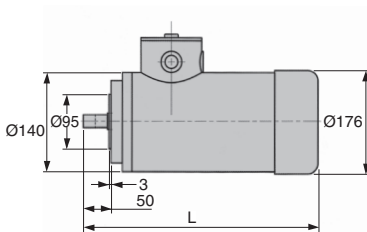
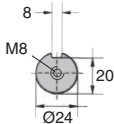
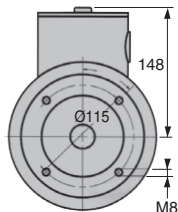
Suitable for the food industry

Accessory

- RFV Stainless steel gearbox to create a motorised gearbox

Option

- Motor with B5 flange



DISCOUNTS

Qty	1+	2+	4+
Disc. List	-5%	On request	

Part number	L	Power (kW)	Current (A)	Efficiency (%)	Power factor	Torque			Weight (kg)	Price each
						Tn (Nm)	Ts (Nm)	Tmax (Nm)		
DER90-S4-B14/SS	352	1,1	2,45	84,30%	0,81	7,35	20,08	20,08 15,20	23,9	1 185,54 €
DER90-L4-B14/SS	368	1,5	3,3	85,10%	0,81	9,93	33,00	33,00 23,50	28,9	1 255,62 €

Dimensions in mm