

# Stainless steel Worm and wheel motorgearbox

Create your set

For food industry

Supporting feet **RFV-FP**  
(tome 2 p.326)

Protective cover closed  
**RFV-CAP** (tome 2 p.327)

Motor 0,18kW à 1,5kW  
(tome 2 p.318)

Gear reducer **RFV40, RFV50, RFV63**,  
Reduction ratio of 7,5/1 to 100/1,  
3 flanges to choose depending  
on the motor selected

**RFV-CAP** protective cover  
(tome 2 p.327)  
open or closed to prevent  
material retention in the output  
bore

Reaction arm **RFV-BR**  
(tome 2 p.325) to better  
support the load

\* See data sheet (tome 2 p.328)

# Stainless steel AC asynchronous motor 0.55 to 0.75 kW **Sta**

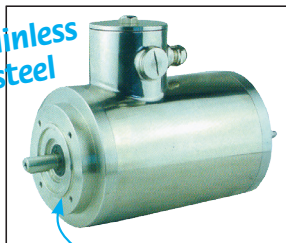
## DER80

## Torque up to 17.46 Nm

- 3 phase asynchronous motor ideal for use in the food industry

- B14 flange
- 4 pole motor
- Speed under no load: 1,500 rpm
- Supply voltage 230/400 VAC
- All surfaces smooth and polished to avoid dirt retention
- Enclosed housing, no ventilation
- Sealed terminal box
- Ingress protection IP66
- Insulation class ISO F
- Material:  
Stainless steel

stainless steel



B14 flange

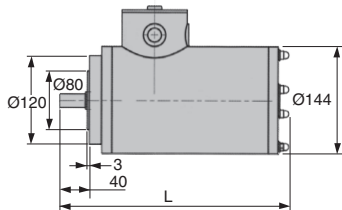
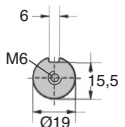
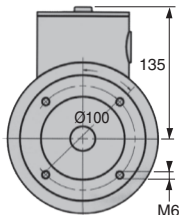
Suitable for the food industry

### Accessory

- RFV Stainless steel gearbox to create a motorised gearbox

### Option

- Motor with B5 flange



### DISCOUNTS

Qty	1+	2+	4+
Disc.	List -5%	On request	

Part number	L	Power (kW)	Current (A)	Efficiency (%)	Power factor	Torque			Weight (kg)	Price each	
						Tn (Nm)	Ts (Nm)	Tmax (Nm)			
DER80-A4-B14/SS	308	0,55	1,33	84,20%	0,75	3,62	10,50	10,50	8,10	18,9	820,64 €
DER80-B4-B14/SS	348	0,75	1,81	85,20%	0,74	4,91	17,46	17,46	12,59	21,0	921,36 €

Dimensions in mm