

Sta Diabolo shaped stainless steel elasto mount

Female / female mounting

CT-ZYss

- Radial elasticity greater than axial elasticity
- Cylinder works under both compression and shear
- Materials :
 - Core: Stainless steel (A2)
 - Cylinder: Rubber
- Hardness NK55-60 Shore A
- Working temp: -40°C to +70°C

Uses

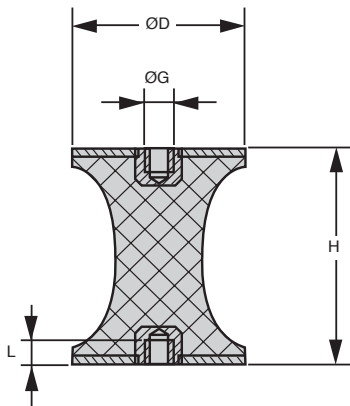
- Dampens sound and vibrations



stainless steel



High flexibility



DISCOUNTS

Qty	1+	6+	20+	40+	100+
Disc.	List	-10%	-15%	-20%	On request

Part number	ØG	ØD	H	L	Stock*	Price each 1 to 5
CT-ZY4-10-10/SS	M4	10	10	4	✓	3,61 €
CT-ZY8-30-20/SS	M8	30	20	8	✓	8,17 €
CT-ZY8-40-48/SS	M8	40	48	8	✓	16,93 €
CT-ZY10-50-30/SS	M10	50	30	10	-	26,63 €

*Depending on availability - Dimensions in mm

Our other products



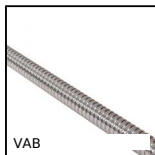
CHB
Double output shaft,
For CHB gearbox



CQA20
Accessory for
adjustment slide-
system, 20



PF60
Worm and wheel gear
reducer, up to 118
Nm



VAB
Ballscrew, supplied by
the metre, Rolled
ballscrew, per metre



BEAS
Knob star grip
antistatic, Star, anti-
static



EBC
Cap nut Hygienic
Design®, Compact



GMK17_R
Round guide, Round
guide for conical
profile



ES
Simple support base
(bipod), Plastic



BOX-INS-W
Box set of self tapping
inserts, Boxed set -



SER69K-CLE
Quarter turn latch for
the food industry,



UGH16
H Type Guide units,
For Ø12 and Ø16



AT10-BAR
AT type tooth bar
stock, AT10

Complementary products



CTZY
Diabolo shaped elasto
mount, Steel



ATZYSS
Stainless steel diabolo
shaped elasto mount,
Stainless steel



AZY
Cylindrical elasto
mount, Steel