

For ball joint or clevis

COA
COG

- For fixing a gas spring
- Materials:
Steel
316L stainless steel

Advantages

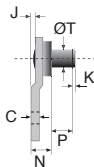
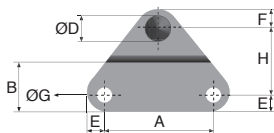
- Allows gas struts to be mounted by combining a mounting plate with a RAS/IBJ ball joint or a CLM clevis

NEW!



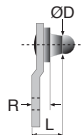
COA

COG



COA

Use with a clevis



COG

Use with a ball joint



DISCOUNTS

Qty	1+	6+	10+	15+	20+
Disc.	List	-10%	-15%	-20%	On request

Use with a clevis

Part number													Max	Price each 1 to 5		
Steel	S/steel	A	B	C	E	F	ØG	H	J	K	ØT	N	P	load (N)	Steel	S/steel
COA-4	-	18	13	1,5	5	5	4,3	16	1	2	4	4,5	4,5	180	15,23 €	-
COA-6	COA-6/SS	18	13	1,5	5	5	4,3	15,6	1	2,5	6	6,5	6,5	180	15,46 €	11,73 €
COA-8	COA-8/SS	55	23	3	7	10	5,3	30	2	5	8	10,0	11	1200	15,46 €	11,81 €

Use with a ball joint

Part number													Max	Price each 1 to 5	
Steel	S/steel	A	B	C	E	F	ØG	H	J	ØD	L	R	load (N)	Steel	S/steel
COG-3,5	-	18	13	1,5	5	5	4,3	16	1	8	13,5	5,5	180	14,75 €	-
COG-5	COG-5/SS	18	13	1,5	5	5	4,3	15,6	1	8	13,5	5,5	180	15,46 €	11,73 €
COG-8	COG-8/SS	55	23	3	7	10	5,3	30	2	13	17,5	8	1200	15,46 €	11,73 €

Dimensions in mm

Our other products



SUPTOOL

Installation tools for clamping hub, For hexagonal clamping hub



MAX26

Motor-gearbox 12V and 24V DC, from 0,075 to 0,6Nm



INS

Self tapping steel insert, Steel



PRFSRAD

Dual lock for aluminium profile, Quick fitting, self locking door du...



PX_PO

Carrying handle, standard



BOX-TOR-H

Box set of Nitrile O-rings in nitrile, 3.00 x 2.00mm to 45.20 x 4.00



SLBWSS

Indexing plunger, weldable, Weldable - Stainless steel



HLUss

Spoked handwheel, Stainless steel 316



CHTRP

Single and dual output gearboxes, Up to 9,1 Nm



BSM_LOK

Long-Lok spring plunger with internal hexagonal socket,



PSG08

Spur gear - precision range, Case hardened steel 20NCD2



PTAF100-PAMF100

Articulated fixable foot with pressed base $\varnothing 100$, $\varnothing 100$

Complementary products



CLM

Male clevis end, Stainless steel short