

Right angled mounting plate SteStaNew

For ball joint or clevis

CNA
CNG

- For fixing a gas spring

- Materials:

Steel

316L stainless steel

Advantages

- Allows gas springs to be mounted by combining mounting plates

with a **RAS/IBJ** ball joint or a

CLS / CLL clevis

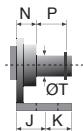
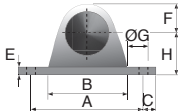
steel or stainless steel



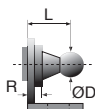
CNA

CNG

NEW!



CNA
Use with a clevis



CNG
Use with a ball joint

DISCOUNTS

Qty	1+	6+	10+	15+	20+
Disc.	List	-10%	-15%	-20%	On request

Use with a clevis

Part number													Max load (N)	Price each 1 to 5		
Steel	S/steel	A	B	C	E	F	ØG	H	J	K	ØT	N		P	Steel	S/steel
CNA-4	-	19	16	3	1,5	4	3,4	10	5,75	4,25	4	3,5	4,5	180	13,30 €	-
CNA-6	CNA-6/SS	40	34	5	2	10	5,3	16	10	10	6	6,0	7	400	15,46 €	44,92 €
CNA-8	CNA-8/SS	40	34	5	2	10	5,3	16	10	10	8	7,0	11	1800	15,46 €	44,92 €

Use with a ball joint

Part number													Max load (N)	Price each 1 to 5		
Steel	S/steel	A	B	C	E	F	ØG	H	J	K	ØD	L		R	Steel	S/steel
CNG-3,5	-	19	16	3	1,5	4	3,4	10	5,75	4,25	8	12,5	4,5	180	13,30 €	-
CNG-5	CNG-5/SS	40	34	5	2	10	5,3	16	10	10	8	13	5	400	15,46 €	44,92 €
CNG-8	CNG-8/SS	40	34	5	2	10	5,3	16	10	10	13	14,5	5	1800	15,46 €	44,92 €

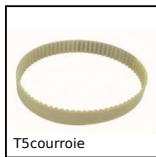
Dimensions in mm

Our other products



SSDB

Stainless steel bevel gear, 2:1



T5courroie

T type timing belt, T5 Steel cored polyurethane



GLT3-76

Telescopic drawer,



RBGtc

Swivel castor with central hole, Steel - grey rubber - with double ball bearings



PRF1945

Standard aluminium profile, 19 x 45 mm



PRFSRAD

Dual lock for aluminium profile, Quick fitting, self locking door



SVR30

Screwjack with travelling nut, with moving nut



DOMI50

Connecting kits, XY linking kit



PLM-SC

Magnetic stud with threaded hole, With threaded hole



DB

Steel bevel gear, 2:1



CLASS

Stainless steel indexing handle - female, Stainless steel



ADL_M

Male eye bolt conforms to DIN580, Stainless steel

Complementary products



CLSCLP

Clevis components, short version, Steel - short range



CLM

Male clevis end, Stainless steel short