

Right angled mounting plate SteStaNew

For ball joint or clevis

CNA
CNG

- For fixing a gas spring

- Materials:

Steel

316L stainless steel

Advantages

- Allows gas springs to be mounted by combining mounting plates

with a **RAS/IBJ** ball joint or a

CLS / CLL clevis

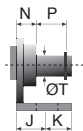
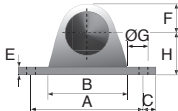
steel or stainless steel



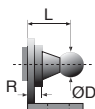
CNA

CNG

NEW!



CNA
Use with a clevis



CNG
Use with a ball joint

DISCOUNTS

Qty	1+	6+	10+	15+	20+
Disc.	List	-10%	-15%	-20%	On request

Use with a clevis

Part number													Max load (N)	Price each 1 to 5		
Steel	S/steel	A	B	C	E	F	ØG	H	J	K	ØT	N		P	Steel	S/steel
CNA-4	-	19	16	3	1,5	4	3,4	10	5,75	4,25	4	3,5	4,5	180	13,30 €	-
CNA-6	CNA-6/SS	40	34	5	2	10	5,3	16	10	10	6	6,0	7	400	15,46 €	44,92 €
CNA-8	CNA-8/SS	40	34	5	2	10	5,3	16	10	10	8	7,0	11	1800	15,46 €	44,92 €

Use with a ball joint

Part number													Max load (N)	Price each 1 to 5		
Steel	S/steel	A	B	C	E	F	ØG	H	J	K	ØD	L		R	Steel	S/steel
CNG-3,5	-	19	16	3	1,5	4	3,4	10	5,75	4,25	8	12,5	4,5	180	13,30 €	-
CNG-5	CNG-5/SS	40	34	5	2	10	5,3	16	10	10	8	13	5	400	15,46 €	44,92 €
CNG-8	CNG-8/SS	40	34	5	2	10	5,3	16	10	10	13	14,5	5	1800	15,46 €	44,92 €

Dimensions in mm

Our other products



HLC19

Right angle spiro bevel gearbox, Up to 43Nm



CDGamme

Compression spring
DIN2095, DIN 2095



HCA

Magnetic screw with socket, Steel



PPRss

Pad eye on mounting plate round, Stainless steel



PRF_BASE

Base plate for aluminium profile,
Base plate



WBGV

Lifting ring, Threaded



E15

Right angle helical reducers, from 0.40 to 2.53 Nm



G0

Steel spur gear, Steel 20NCD2



DILC

Indexing plunger with cam, with cam



TSM_T10M

T type timing belt per metre, T5 Steel cored polyurethane



GARQT

Quarter turn lock pin for clamping, Quarter turn



SUPccss

Self-centering clamping hub stainless steel, With lock nut

Complementary products



RAS

90° ball and socket joints DIN71802, Steel



IBJ

180° ball and socket joints, Steel



COA-COG

Surface mounting plate, Surface mounting plate for ball joint